



SAILING INSTRUCTIONS
2015 Boston Harbor Islands Regatta
Benefiting the Boston Harbor Islands National Park
Saturday, October 3, 2015
POSTPONED to Sunday, October 11, 2015

The organizing authority is the Boston Harbor Islands Alliance.

1. RULES

- 1.1. The regatta will be governed by the rules as defined in The Racing Rules of Sailing (RRS) for 2013-2016.
- 1.2. The prescriptions of US SAILING, the 2015 PHRF-NE Rating Rules, and the safety and equipment regulations of the US Coast Guard shall apply.
- 1.3. These rules may be modified by the Boston Harbor Islands Race (BHIR) Committee in the Notice of Race and these Sailing Instructions. If there is any conflict between the Notice of Race and the Sailing Instructions, the Sailing Instructions shall prevail.
- 1.4. Rule 52 is deleted.
- 1.5. Boats racing with a class rating shall comply with their one-design class rules.
- 1.6. This event has been designated a Clean Regatta by Sailors for the Sea (www.sailorsforthesea.org) and we have pledged our commitment to keeping the waters of Boston Harbor and the shores of the Islands clean and free of debris in conjunction with or prior to, during, or after the regatta. Please help us fulfill this commitment by keeping all your trash in your boat and out of the water... leaving nothing behind other than your wake.
- 1.7. Any commercial or editorial reference to this event shall use the Regatta's name on first mention, which is "2015 Boston Harbor Islands Regatta".

2. ELIGIBILITY AND ENTRY

- 2.1. The regatta is open to all monohull sailing vessels 21 feet LOA and larger, sailed by at least two people, that submit a completed entry form.
- 2.2. Complete an entry on www.bostonharborislandsregatta.org or fax (617-223-8671) or mail the Entry Form attached.
- 2.3. For those entrants without a current 2015 PHRF-NE rating certificate, the BHIR Committee shall assign a rating based upon that of similar vessels using information supplied on the BHIR Rating Application form.
- 2.4. Entries received after September 27, 2015 will be accepted at the discretion of the Committee.

3. EQUIPMENT

- 3.1. All boats shall carry an operating VHF radio.
- 3.2. All boats are encouraged to display a class flag on their backstay.
- 3.3. Boats will be identified using their sail number. For boats without sail numbers, bow numbers, provided by the organizing authority at the skippers meeting, will be used.

- 3.4. Please note US SAILING prescription 5.01: “All personnel on deck shall wear personal flotation while starting and finishing except when the Captain of the boat directs that it may be set aside”. Penalties for breaches of this Sailing Instruction will be at the discretion of the protest committee.
- 3.5. For boats without lifelines, all personnel shall wear personal flotation at all times while on the water, except briefly while changing or adjusting clothing. Type IV flotation shall not be considered sufficient personal flotation. Inflatable personal flotation are allowed provided that it has a functioning automatic inflation mechanism and is designed to be secured around both the neck and waist of the competitor.

4. NOTICES TO COMPETITORS

- 4.1. Notices to competitors will be posted on the official notice board located on Spectacle Island. Competitors are urged to monitor VHF Channel 68 for information provided by the Race Committee.
- 4.2. Any changes to the sailing instructions will be posted on the official notice board and event website no later than 0930 on the day of the race unless there is a postponement ashore. In the event of a postponement ashore, any changes to the sailing instructions will be posted no later than the lowering of flag AP.

5. SCHEDULE OF EVENTS

Friday, October 2

1800 Race Skippers Meeting at Boston Sailing Center

Saturday, October 3 – **POSTPONED to Sunday, October 11**

1100 First Warning Signal.

After the race, competitors can moor or anchor off Spectacle Island and join the post-race party and awards presentations on the island. More details on the party will be available on the event web site.

6. THE START

- 6.1. The race will be a pursuit race with each boat starting on her own time in accordance with the Schedule of Starts, which is part of these Sailing Instructions. The official time is GPS time as read from the Race Committee signal boat's GPS. At 1100 the warning signal (a yellow flag) will be displayed and a five-minute RRS 26 starting sequence will be conducted. At 1105, the yellow flag will be lowered, and the pursuit race will begin with the start of the first scheduled boat.
- 6.2. In the event of a postponement, the duration of the postponement will be added to each boat's start time listed in the Schedule of Starts. This time will be announced to competitors before the Warning Signal on VHF Channel 68.
- 6.3. The Start Area will be bounded by the Race Committee Start Boat, the orange tetrahedron starting mark, a green tetrahedron, and a yellow tetrahedron. Boats shall not enter this area until 5 minutes before their start. Any boat entering this area before this time will be subject to protest and disqualification. Only the Race Committee may protest a violation of this rule. This changes RRS 60.1.
- 6.4. After entering the Start Area, no boat shall deploy a spinnaker prior to crossing the start line.
- 6.5. Because this is a pursuit race, boats that are on the course side of the starting line at their assigned starting time will NOT be notified by the display of flag X and sound signal. The Race Committee will attempt to notify OCS boats on VHF channel 68. This changes RRS 29. The failure of a boat to hear such a hail, or the lack of timeliness of the hail shall not be grounds for granting redress. This changes RRS 62.1(a).

7. RACING AREA

The race will be around the islands of Boston Harbor (see the Course Descriptions).

8. COURSES and MARKS

The marks, courses and course designations are described in the Course Descriptions. Notification of course to be sailed by each class will be broadcast on VHF Channel 68 at 1030, and will be displayed on the stern of the Race Committee signal boat.

9. STARTING AND FINISHING LINES

- 9.1. The Starting Line will be between the staff from which an orange flag is displayed on the Race Committee signal boat and the course side of the nearby orange inflatable starting mark.
- 9.2. The Finish Line will be between the staff from which an orange flag is displayed on a Race Committee boat and course side of the nearby orange inflatable finish mark.
- 9.3. The principal Race Committee boat is a white 42-foot Grand Banks motor boat with a blur bimini and will be located between buoys Y N"E" and R"2" FI R 4s near the southeast corner of Anchorage 2 of Boston Harbor.

10. PENALTY SYSTEM

- 10.1. The penalty for infringing a rule of Part 2 (When Boats Meet) shall be a one-turn penalty, including one tack and one gybe in the same direction. This modifies RRS 44.2.
- 10.2. Competitors are reminded that many of the participants in this regatta do not race actively and are unfamiliar with the Racing Rules of Sailing (RRS). Courtesy and instruction shall be the by-words on the race course, not aggressive application of the Rules.

11. TIME LIMIT

- 11.1. The time limit for the race will be four (4) hours for the first boat to sail the course in accordance with RRS 28.1.
- 11.2. Any boat finishing more than sixty (60) minutes after the first boat in her class sails the course in accordance with RRS 28.1 may be scored DNF without a hearing. This changes RRS 35, 63.1, A4.1 and A5.
- 11.3. Any boat finishing after 1530 hours may be scored DNF. This changes RRS 35, 63.1, A4.1 and A5.

12. PROTESTS

- 12.1. In addition to hailing 'Protest' and conspicuously displaying a red flag at the first reasonable opportunity, a protesting boat shall notify the Race Committee of intent to protest at the first reasonable opportunity after finishing. Such notification may be made via VHF Channel 68. Failure to do so may be grounds for closing the protest (Changes RRS 63.5).
- 12.2. Written protests shall be delivered to the Race Committee on Spectacle Island within 30 minutes after the Race Committee signal boat docks. Protest forms may be obtained at the official notice board on Spectacle Island.
- 12.3. Hearings will be held as soon as possible after racing. The protest time limit, a list of protests received, and the schedule and location of hearings will be posted on the official notice board. This posting shall constitute the notice required by RRS 61.1(b) and 63.2.

13. SCORING

The Boston Harbor Islands Regatta is a one-race regatta using a pursuit race format. PHRF handicaps are built into each boat's starting time. Provided that the race runs its full scheduled length, scoring will be the order of finish within each class.

14. PRIZES

Prizes will be awarded to the top three (3) places in each class. Additional awards will be given in the following categories: Top Overall Long Course, Top Overall Short Course, Yacht Club Challenge Trophy, Top Finishing Master Yacht, Top Finishing Youth Yacht, Top Placing Community Sailing Club, and Spirit Award.

15. DOCKAGE AT SPECTACLE ISLAND

Docking is available on the west side of Spectacle Island and no cost to participants. Twelve moorings are also available on the west side of the island at no cost to the participants.

16. DISCLAIMER OF LIABILITY

Competitors participate in the race entirely at their own risk. See RRS 4, Decision to Race. The organizing authority, sponsors, or staff assisting in this event will not accept any liability for material damage or personal injury or death sustained in conjunction with, or prior to, during, or after the

regatta (including on-shore regatta events).

17. CONDUCT

The boat owner or skipper shall be responsible for the conduct of the crew offshore and onshore. The Race Committee reserves the right to reject any boat, skipper, or crew from this race and/or future races in the event of a serious breach of conduct.

18. NOTES

- 18.1. Competitors are reminded that Boston Harbor and its approaches are considered restricted channels for commercial traffic and other vessels restricted in their ability to maneuver. Competitors must comply with the government right-of-way rules when in proximity to commercial or privileged marine traffic.
- 18.2. All times herein are Eastern Daylight times. Bearings are in degrees magnetic and are approximate. Distances used herein are expressed in nautical miles (when not otherwise defined) and are approximate.
- 18.3. Boston Harbor Tides for Saturday, October 3, 2015 at Deer Island Light are:

Low Tide	09:50	0.0 feet
High Tide	16:07	10.6 feet

FURTHER INFORMATION

For further information, please consult the event's web site at

<http://www.islandalliance.org/#!regatta/c159x>.

Principal Race Officer
Carl Zimba
carl@courageoussailing.org
617.242.3821

Boston Harbor Islands Alliance
Whitney Scharer
wsharer@islandalliance.org
617.223.8686



2015 Boston Harbor Islands Regatta

Presented by

Bealconsulting
Investment Advisors



Boston Sailing Center



With Thanks to Our Donors:

**Bruce & Kathryn Beal
Enid Beal
Rosalind Gorin & Matthew Budd
Deborah Pratt Dawson
John & Ila Gross
David & Susan Rockefeller
Claudia Yookoji
Paul & Katie Bittenweiser
Ann & Marvin Collier
Wendy Shattuck & Sam Plimpton**

Description of Courses

It is our intention this year to use two courses, a longer one for the faster boats and a slow one for the slower boats. Toward that end, there are five potential courses, two intended to be used if there is ample wind and three other shorter courses if the wind is not as promising. All share the same start/finish line near the "Y N E" mark in Anchorage #2 of Boston Harbor and can be sailed in either the clockwise or counter-clockwise direction, as specified by the race committee.

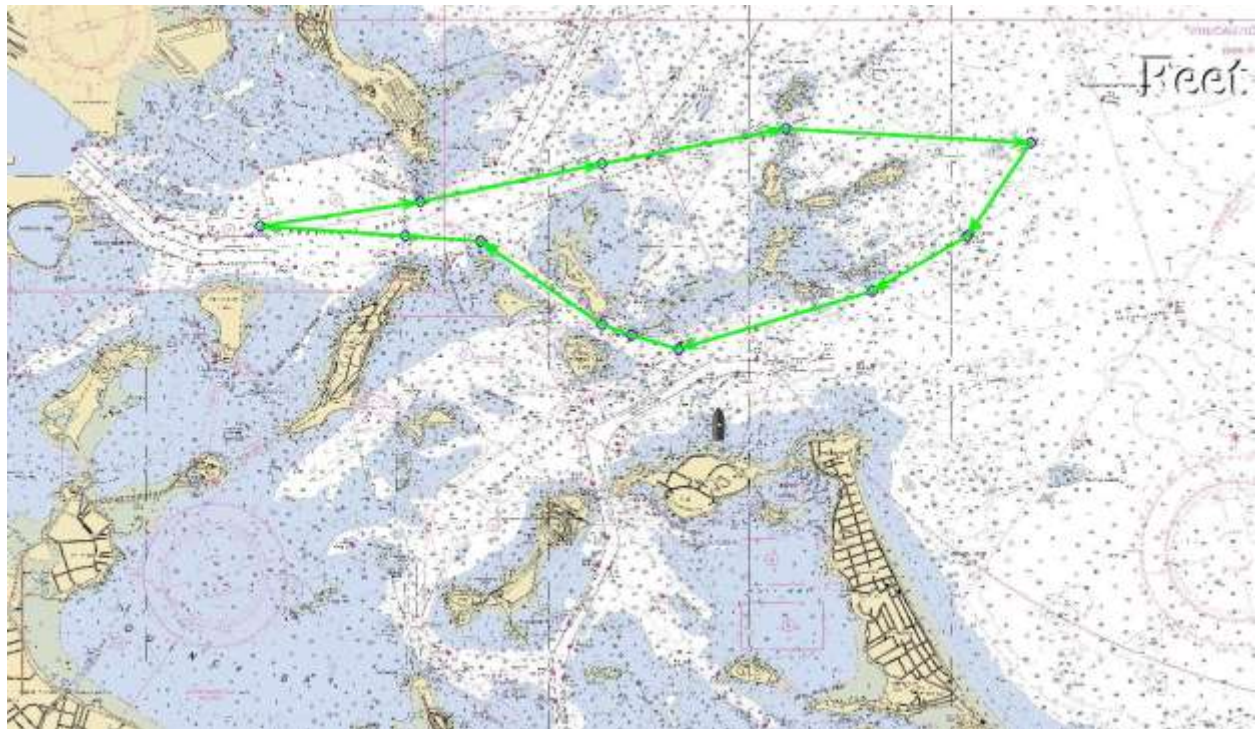
Distance	Clockwise Course	Clockwise Description	Reverse-Clockwise Course	Reverse-Clockwise Description
12.2 nm	L	Start - Long Island Head – Calf Island - Martin Ledge - Boston Ledge - Little Brewster - Georges Island – The Narrows - Finish	LR	Start – The Narrows – Georges Island – Little Brewster – Boston Ledge – Martin Ledge – Calf Island – Long Island Head - Finish
8.8 nm	M2	Start - Long Island Head - The Narrows - Gallops Island - Sunken Ledge - Rainsford Island - Nubble Channel - Finish	M2R	Start – Nubble Channel – Rainsford Island – Sunken Ledge – Gallops Island – The Narrows – Long Island Head – Finish
9.5 nm	M1	Start - Long Island Head - The Narrows - Georges Island - Sunken Ledge - Rainsford Island - Nubble Channel - Finish	M1R	Start – Nubble Channel – Rainsford Island – Sunken Ledge – Georges Island – The Narrows – Long Island Head – Finish
6.0 nm	S1	Start - Nubble Channel - Long Island - Western Way - Spectacle Island - Finish	S1R	Start – Spectacle Island – Western Way – Long Island – Nubble Channel – Finish
6.5 nm	S2	Start – The Narrows – Gallops Island – Georges Island – Gallops Island - Nubble Channel - Finish	S2R	Start – Nubbles Channel – Gallops Island – Georges Island – The Narrows – Gallops Island - Finish

Course L / LR : 12.2 nm

Clockwise : Start - Long Island Head - Outer Brewster - Martin Ledge - Boston Ledge - Little Brewster - Georges Island - The Narrows - Finish

Counterclockwise : Start – The Narrows – Georges Island – Little Brewster – Boston Ledge – Martin Ledge – Calf Island – Long Island Head - Finish

Course L (Clockwise)	Course LR (Counterclockwise)
<p>Start - G"17" FI G 2.5 s (to starboard) - Deer Island Light (to port) - GC"13" (to starboard) - GC"11" (to starboard) - Little Calf Island (to starboard) – Hypocrite Channel - R N"4" [Martin Ledge] (to starboard) - R N"6" [Boston Ledge] (to starboard) - Shag Rocks (to starboard) - Little Brewster Island and BOSTON FI 10s 102 ft 27M HORN [Boston Light] (to starboard) - R"2" Bell [Kelly Rock] (to starboard) - FI R"4" 4s (to starboard) - N"6" (to starboard) - G"15"QG BELL (to port) - G"17" FI G 2.5s (to port) - Finish</p>	<p>Start - G"17" FI G 2.5s (to starboard) - G"15"QG BELL (to starboard) - N"6" (to port) - FI R"4" 4s (to port) - R"2" Bell [Kelly Rock] (to port) - Little Brewster Island and BOSTON FI 10s 102 ft 27M HORN [Boston Light] (to port) - Shag Rocks (to port) - R N"6" [Boston Ledge] (to port) - R N"4" [Martin Ledge] (to port) - Little Calf Island (to port) - Hypocrite Channel - GC"11" (to port) - GC"13" (to port) - Deer Island Light (to starboard) - G"17" FI G 2.5 s (to port) - Finish</p>



Course M2 / M2R : 8.8 nm

Clockwise : Start - Long Island Head - The Narrows - Gallops Island - Sunken Ledge - Rainsford Island - Nubble Channel – Finish

Counterclockwise : Start – Nubble Channel – Rainsford Island – Sunken Ledge – Gallops Island – The Narrows – Long Island Head – Finish

Course M2 (Clockwise)	Course M2R (Counterclockwise)
<p>Start - G"17" FI G 2.5 s (to starboard) - G"15" QC Bell [to starboard) - The Narrows - FI G"7" 4s HORN (to starboard) - GR C "HS" (to starboard) - R N "2P" (to starboard) - Offset mark west of R N "2P" (to starboard) - R N "6" (to starboard) - R N "4" (to port) - G C"1" (to port) - between G C"3" and R N"4" [Nubble Channel] - G C"5" (to port) - G"17" FI G 2.5s (to port) - Finish</p>	<p>Start - G"17" FI G 2.5s (to starboard) - G C"5" (to starboard) - between G C"3" and R N"4" [Nubble Channel] - G C"1" (to starboard) - R N "4" (to starboard) - R N "6" (to port) - Offset mark west of R N "2P" (to port) - R N "2P" (to port) - GR C "HS" (to port) - FI G"7" 4s HORN (to port) - The Narrows - G"15" QC Bell [to port) - G"17" FI G 2.5 s (to port) - Finish</p>



Course M1 / M1R : 9.5 nm

Clockwise : Start - Long Island Head - The Narrows - Georges Island - Sunken Ledge - Rainsford Island - Nubble Channel – Finish

Counterclockwise : Start – Nubble Channel – Rainsford Island – Sunken Ledge – Georges Island – The Narrows – Long Island Head – Finish

Course M1 (Clockwise)	Course M1R (Counterclockwise)
<p>Start - G"17" FI G 2.5 s (to starboard) - G"15" QC Bell [to starboard) - The Narrows - FI G"7" 4s HORN (to starboard) - G"5" BELL (to starboard) - G"3" QG (to starboard) - R N "2P" (to starboard) – Offset mark west of R N "2P" (to starboard) - White tetrahedron east of R N "6" (to starboard) - R N "4" (to port) - G C"1" (to port) - between G C"3" and R N"4" [Nubble Channel] - G C"5" (to port) - G"17" FI G 2.5s (to port) - Finish</p>	<p>Start - G"17" FI G 2.5s (to starboard) - G C"5" (to starboard) - between G C"3" and R N"4" [Nubble Channel] - G C"1" (to starboard) - R N "4" (to starboard) - White tetrahedron east of R N "6" (to port) - Offset mark west of R N "2P" (to port) - R N "2P" (to port) - G"3" QG (to port) - The Narrows - G"5" BELL (to port) - FI G"7" 4s HORN (to port) - G"15" QC Bell [to port) - G"17" FI G 2.5 s (to port) - Finish</p>



Course S1 / S1R : 6.0 nm

Clockwise : Start - Nubble Channel - Long Island - Western Way - Spectacle Island – Finish

Counterclockwise : Start – Spectacle Island – Wester Way – Long Island – Nubble Channel – Finish

Course S1 (Clockwise)	Course S1R (Counterclockwise)
<p>Start - G"17" FI G 2.5 s (to starboard) - G C"5" (to starboard) - G C"3" (to starboard) - G C"1" (to starboard) - R N"4" (to starboard) - R N"6" (to starboard) - Long Island Bridge [marked center supports] - W Or "C" FI 5s (to starboard) - W Or "B" FI 5s (to starboard) - W Or "A" FI 5s (to starboard) - G"3" QG (to starboard) - G"1" FI G 4s (to port) - Finish</p>	<p>Start - G"1" FI G 4s (to starboard) - G"3" QG (to port) - W Or "A" FI 5s (to port) - W Or "B" FI 5s (to port) - W Or "C" FI 5s (to port) - Long Island Bridge [marked center supports] - R N"6" (to port) - R N"4" (to port) - G C"1" (to port) - G C"3" (to port) - G C"5" (to port) - G"17" FI G 2.5 s (to port) - Finish</p>



Course S2 / S2R : 6.5 nm

Clockwise : Start – The Narrows – Gallops Island – Georges Island – Gallops Island - Nubble Channel – Long Island Head - Finish

Counterclockwise : Start – Long Island Head – Nubbles Channel – Gallops Island – Georges Island – The Narrows – Gallops Island - Finish

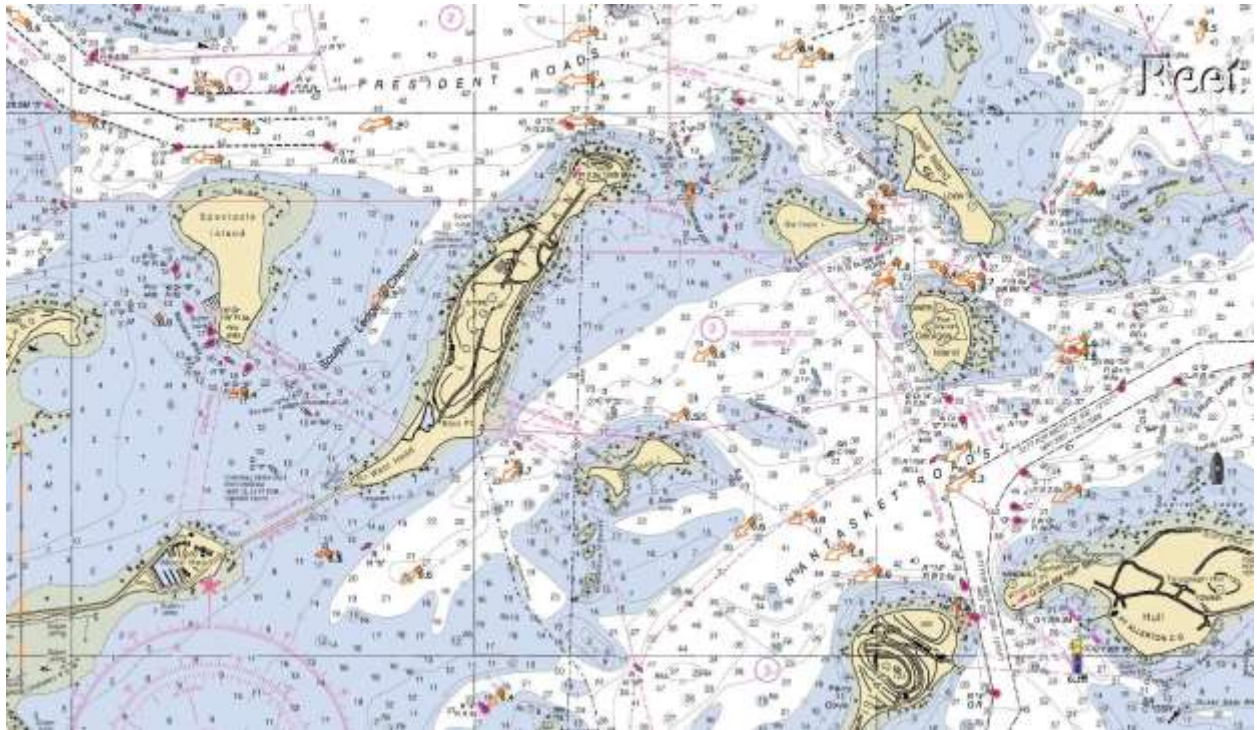
Course S2 (Clockwise)	Course S2R (Counterclockwise)
<p>Start - G"17" FI G 2.5 s (to starboard) - G"15" QC Bell [to starboard) - The Narrows - FI G"7" 4s HORN (to starboard) - G"5" BELL (to starboard) - G"3" QG (to starboard) - W Or"A" FI 2.5s (to starboard) - R N"2" (to starboard) - between G C"3" and R N"4" [Nubble Channel] - G C"5" (to port) - G"17" FI G 2.5 s (to port) - Finish</p>	<p>Start - G"17" FI G 2.5 s (to starboard) - G C"5" (to starboard) - between G C"3" and R N"4" [Nubble Channel] - R N"2" (to port) - W Or"A" FI 2.5s (to port) - G"3" QG (to port) - G"5" BELL (to port) - FI G"7" 4s HORN (to port) - The Narrows - G"15" QC Bell [to port) - G"17" FI G 2.5 s (to port) - Finish</p>



The chart below shows the estimated tidal currents at mid-tide during the race.

Boston Harbor Tides for Saturday, October 3, 2015 at Deer Island Light are:

Low Tide	09:50	0.0 feet
Mid Tide	12:58	
High Tide	16:07	10.6 feet



Amendment #1 to the Sailing Instructions

1. A second short course has been added in the event that passage through the Long Island Bridge is closed. The two potential short courses are now named S1 and S2 in the clockwise directions and S1R and S2R in the counter-clockwise direction.
2. An error in the detailed text of the route for Course S1 and S1R has been corrected.
3. For safety an offset mark west of R N "2P" has been added to Courses M1 / M1R and M2 / M2R.
4. Notification of course to be sailed by each class will be broadcast on VHF Channel 68 at 1030 and will be displayed on the stern of the Race Committee signal boat.
5. The principal Race Committee boat is a white 42-foot Grand Banks motor vessel with a blue bimini and will be located between buoys Y N"E" and R"2" FI R 4s near the southeast corner of Anchorage 2 of Boston Harbor.

Amendment #2 to the Sailing Instructions

1. Racing is postponed to Sunday, October 4, 2015. First warning signal will be at 11:00.
2. An error in the detailed text of the route for Course M2R has been corrected.
3. Added "*as specified by the race committee*" to the last sentence in the first paragraph in the Course Description section. To be clear, all boats on a particular course will be sailing either clockwise or counter-clockwise as specified by the race committee.

Amendment #3 to the Sailing Instructions

1. An error in the detailed text of the route for Course S1R has been corrected.

Amendment #4 to the Sailing Instructions

1. Racing is postponed to Sunday, October 11, 2015. First warning signal will be at 11:00.

This information has also been added to the Sailing Instruction document above.