



BOOTHBAY HARBOR YACHT CLUB

Commodore's Cup Series - 2016

June 26, and August 7 & August
21

SAILING INSTRUCTIONS

1 RULES

The regatta will be governed by the rules as defined in The Racing Rules of Sailing, except that rule 44.1 is changed so that a boat may take One-Turn Penalty when she may have broken a rule of Part 2.

2 NOTICE TO COMPETITORS

Notices to competitors will be posted on the official notice board in the Casino and on the BHYC web site.

3 CHANGES TO SAILING INSTRUCTIONS

Any changes to sailing instructions will be posted before 0900 on the day they will take effect, except that any change to the schedule of races will be posted by 1600 on the day before it will take effect.


4 SIGNALS MADE ASHORE

- 4.1 Signals made ashore will be displayed from the flag pole on the dock at BHYC.
- 4.2 When flag AP is displayed ashore, '1 minute' is replaced with 'not less than 60 minutes' in race signal AP.

5 SCHEDULE OF RACES

- 5.1 A brief skippers meeting will be held in the Clubhouse at 1145 each day.
- 5.2 The time of the first warning is scheduled for 1300 each day.

6 CLASSES AND CLASS FLAGS

Class	Comment	Class Flag
Red Fleet	PHRF NE rating under 150	Code Flag "B" 
Blue Fleet	PHRF NE rating between 150 and 200	Blue Flag
White Fleet	PHRF rating over 200	BHOD Class Flag

7 COURSES

- 7.1 Racing will be on a variety of windward-leeward and/or "around the buoys" courses set in the Boothbay Region including Boothbay Harbor and islands, Damariscotta River, and Sheepscoot Bay.
- 7.2 One race will be sailed each day.
- 7.3 Courses will be announced on VHF Channel 72 prior to the warning signal for each race.
- 7.4 All yachts should carry a functioning VHF Radio. The Race Committee will make every attempt to hail competitors verbally and on VHF. It is the responsibility of competitors to comply with instructions from the signal boat.

8 MARKS

- 8.1 Marks are identified and described in:
Appendix A - Marks Inside Tumbler Island
Appendix B - Marks Outside Tumbler Island
- 8.2 Drop Marks will be orange or yellow inflatables. Pin Marks for starting or finishing lines will be small red or orange balls. The Race Committee may use a Mark as a Pin Mark.
- 8.3 NOTE - Boats shall not sail between mark "J" and Ocean Point when mark "J" is not a mark of the course. Boats shall not sail between Fisherman's Island and The Hypocrites or between Tumbler Island and Spruce Point.

9 THE START

- 9.1 The approximate location of the starting area will be announced at the Skippers' Meetings at BHYC and on VHF Channel 72 prior to the first race.
- 9.2 The starting line will be between a staff displaying a yellow flag on the signal boat

- and a nearby mark, as announced by the Race Committee.
- 9.3 The starting order for the first race of the day will be:
- Red Fleet
 - Blue Fleet
 - White Fleet
- 9.4 For subsequent races, classes will be started as soon as all boats in that class have finished.
- 9.5 Different classes may be started together at the discretion of the Race Committee.
- 9.6 The Race Committee will attempt to identify recalled boats by hail or broadcast over VHF channel 72. Failure of a boat to see or hear her recall notification will not be grounds for redress. The failure to hail, or the hail of some but not all, or untimely hail shall not be grounds for granting redress.

10 THE FINISH

The finish line will be between a staff displaying a yellow flag on the signal boat and a nearby mark, as announced by the Race Committee.

11 TIME LIMITS

The time limit for the first boat to sail the course and finish is 180 minutes. Boats failing to finish within 60 minutes after the first boat of the division sails the course and finishes will be scored Did Not Finish, without hearing, changing rules 35, A4 and A5.

12 PROTESTS AND REQUESTS FOR REDRESS

- 12.1 Protest forms are available on the board in the Casino.
- 12.2 In addition to the requirements of Rule 61.1(a), a boat intending to protest or request redress shall inform the Race Committee by VHF radio on Channel 72 at the first reasonable opportunity.
- 12.3 Written protests and requests for redress shall be delivered to the race officer within 30 minutes after the signal boat has docked.

13 SCORING

- 13.1 Individual races will be scored using PHRF Time on Distance.
- 13.2 Series (all three races) results will be determined using the Low Point System, with all races included in the series score.
- 13.3 RRS A4.2 is changed as follows: DNC, DNS, DNF, DSQ, OCS will be scored as one point more than the maximum number of boats racing that day.
- 13.4 A boat starting later than 5 minutes after her starting signal shall be scored DNS.

14 RADIO COMMUNICATION

The race committee will monitor VHF channel 72 for emergency transmissions. The race committee may also be using VHF channel 72 for working communications, and may employ an “open mike” policy. A boat shall neither make radio transmissions while racing nor receive radio communications not available to all boats, except for emergencies. This restriction also applies to cellular telephones and other electronic devices. Boats may monitor VHF channel 72, but are advised that any race committee communications are unofficial, and made either for race management purposes or as a courtesy to the competitors.

15 SAFETY

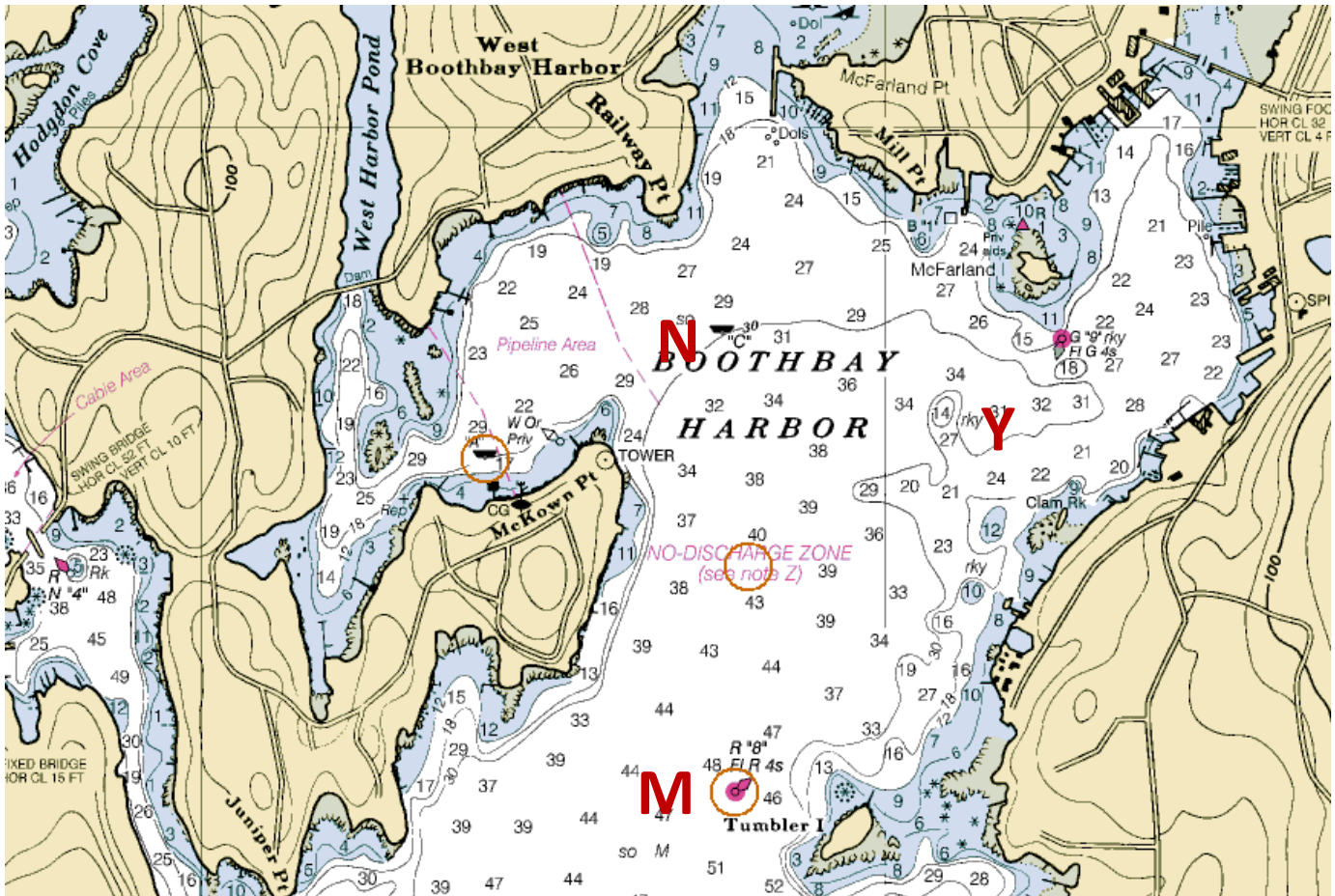
- 15.1 All boats are requested to check-in with the Race Committee before the start of the first race each day by sailing past the RC signal boat on starboard tack and hailing their sailing number, and receiving confirmation from the Race Committee, or by calling on VHF channel 72.
- 15.2 A boat that retires must notify the RC as soon as possible.

16 DISCLAIMER OF LIABILITY

Competitors participate in the regatta entirely at their own risk. See rule 4, Decision to Race. The organizing authority will not accept any liability for material damage or personal injury or death sustained in conjunction with or prior to, during, or after the regatta.

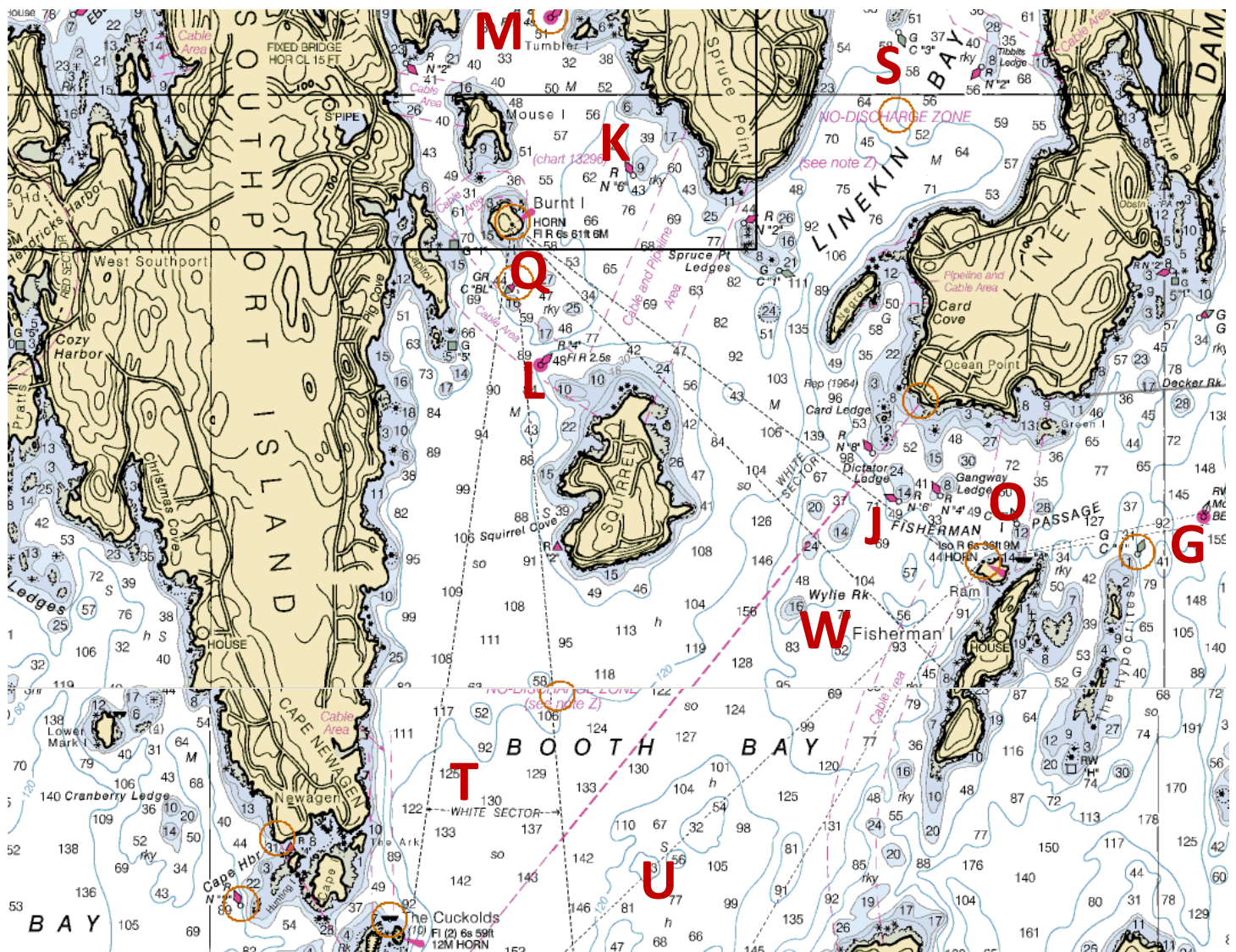
Appendix A - Marks Inside Tumbler Island

ID	Approx Lat/Long	Description
M	N 43 50.3 / W 069 38.2	R "8" Fl R 4s NW of Tumbler Island
N	N 43 50.8 / W 069 38.2	USCG buoy off BHYC mooring field
X	TBD	Other marks to be determined by Race Committee
Y	N 43 50.6 / W 069 38.0	Sherman Zwicker Mooring



Appendix B - Marks Outside Tumbler Island

ID	Approx Lat/Long	Description
G	N 43 48.4 / W 069 34.8	RW Bell MO(A) "HL" 0.88 nm NE by E of Ram Island Light
J	N 43 48.5 / W 069 36.4	N "6" in Fisherman Island Passage
K	N 43 49.7 / W 069 37.7	Portable mark near N "6" off Spruce Point, Boothbay Hbr
L	N 43 48.9 / W 069 38.2	R "4" Fl R 2.5s NW of Squirrel Island
M	N 43 50.3 / W 069 38.2	R "8" Fl R 4s NW of Tumbler Island
O	N 43 48.4 / W 069 35.8	G can "3" between Ocean Point and Ram island
Q	N 43 49.3 / W 069 38.4	GR "BL" S of Burnt Island
S	N 43 50.2 / W 069 36.4	G"3" S of Cabbage Island in Linekin Bay
T	N 43 47.6 / W 069 38.5	Drop mark at the 52' spot NE of Newagen
U	N 43 47.1 / W 069 37.4	Drop mark at the 32' spot S of Squirrel
W	N 43 48.1 / W 069 36.8	Drop mark at 16' spot W of Fisherman Island at Wylie Rock
X	TBD	Drop mark to be determined by Race Committee
A	N 43 46.4/W 069 39.0	Bell "1C" S of Cuckolds Light*
C	N 43 47.8/W 069 41.2	R FL 4s Bell "2SR" SW of Mark A*



*Marks A and C are shown on the laminated chart available at the BHYC Ships Store.