

**Fall Series and Lightship Trophy Races**  
**September 19 – October 10, 2020**  
**Portland Yacht Club**  
**40 Old Powerhouse Road**  
**Falmouth, Maine**



## **SAILING INSTRUCTIONS**

### **1 RULES**

- 1.1 The regatta will be governed by the rules as defined in *The Racing Rules of Sailing*.
- 1.2 The Safety Equipment List provided in the Notice of Race will apply.

### **2 NOTICES TO COMPETITORS**

Notices to competitors will be posted on the official notice board located at the southwest corner of the PYC clubhouse.

### **3 CHANGES TO SAILING INSTRUCTIONS**

Any change to the sailing instructions will be posted before 0900 for the Lightship Race and 1145 for the Fall Series races, except that any change to the schedule of races will be posted by 2000 on the day before it will take effect.

### **4 SIGNALS MADE ASHORE**

- 4.1 Signals made ashore will be displayed at the mast of the PYC.
- 4.2 When flag AP is displayed ashore, “1 minute” is replaced with “not less than 60 minutes” in the race signal A.

### **5 SCHEDULE OF RACES**

5.1 Dates of racing:

<u>Date</u>	<u>Event</u>	<u>Number of races</u>
Saturday, September 19	Lightship Race	1 race
Saturday, September 26	Fall Series	1 or more races
Saturday, October 3	Fall Series	1 or more races
Saturday, October 10	Fall Series	1 or more races

- 5.2 Boats shall check in at the race committee boat prior to the warning signal of the first race each day. Check in by passing the RC boat on starboard tack or by VHF Ch. 69
- 5.3 The scheduled time of the warning signal for the first race each day is 1000 for the Lightship Race and 1300 for the Fall Series races.
- 5.4 To alert boats that a race or sequence of races will begin soon, the orange starting line flag will be displayed with one sound at least five minutes before a warning signal is made.
- 5.5 Signal Flag A displayed, with no sound, while boats are finishing means “No more racing today.”

## 6 CLASS FLAGS

Class flags will be:

Racing Class A	White flag with Blue "A"
Racing Class B	Blue flag with White "B"
Cruising Class C	Red flag with White "C"
One-design	As noted by the Race Committee

## 7 RACING AREAS

The starting area shall be between Clapboard Island and Long Island unless the Race Committee chooses another area. Races will occur within the confines of the 2020 CYC-PYC Mark List Chart.

## 8 THE COURSES

8.1 The courses for the Fall Series PHRF Classes will use government and drop marks as described on the 2020 CYC-PYC Mark List as shown in Attachment B.

8.2 The course for the Lightship Race is as follows:

Start in the vicinity of Mark P to a gate between Marks OC and OD to Mark OP left to port to a gate between Marks OC and OD finish at Mark P

8.3 No later than the warning signal, the race committee signal vessel will display the approximate course and compass bearing of the first leg.

## 9 MARKS

9.1 Marks shall be described in the 2020 CYC-PYC Mark List as shown in Attachment B.

9.2 The starting and finishing marks will be an orange inflatable.

9.3 A race committee vessel signaling a change of a leg of the course is a mark as provided in SI 12.

## 10 AREAS THAT ARE OBSTRUCTIONS

The following areas are designated as obstructions: Government Navigation Aids "N12", "N14", and "R18" near Clapboard Island must be passed on the safe side (the westerly side) at all times.

## 11 THE START

11.1 Races will be started by using RRS 26 with the warning signal made 5 minutes before the starting signal.

11.2 The starting line will be between a staff displaying an orange flag on the signal boat at the starboard end and the course side of the port-end starting mark.

11.3 Boats whose warning signal has not been made shall avoid the starting area during the starting sequence for other races.

11.4 A boat that does not start within 10 minutes after her starting signal will be scored Did Not Start without a hearing. This changes RRS A4 and A5.

## **12 CHANGE OF THE NEXT LEG OF THE COURSE**

To change the next leg of the course, the race committee will change the designated mark (or the finishing line.)

## **13 THE FINISH**

13.1 The finishing line will be between a staff displaying an orange flag on the signal boat at the starboard end and the course side of the port-end finishing mark.

13.2 If the race committee is absent when a boat finishes, she should report her finishing time, and her position in relation to nearby boats, to the race committee at the first reasonable opportunity.

## **14 TIME LIMITS AND TARGET TIMES**

Boats failing to finish within 90 minutes after the first boat in her class sails the course and finishes will be scored Did Not Finish without a hearing. This changes RRS 35, A4 and A5.

## **15 PROTESTS AND REQUESTS FOR REDRESS**

15.1 Protest forms are available at the PYC Bulletin Board located in the outside. Protests and requests for redress or reopening shall be delivered there within the appropriate time limit.

15.2 For each class, the protest time limit is 90 minutes after the last boat has finished the last race of the day or the race committee signals no more racing today, whichever is later.

15.3 Notices will be posted no later than 30 minutes after the protest time limit to inform competitors of hearings in which they are parties or named as witnesses. Hearings will be held, in a location designated by the Protest Committee, beginning as posted.

15.4 Notices of protests by the race committee, technical committee or protest committee will be posted to inform boats under RRS 61.1(b).

15.5 Breaches of SIs 17 and 18 will not be grounds for a protest by a boat. This changes RRS 60.1(a).

## **16 SCORING**

16.1 The scoring system is as follows: RRS Appendix A.

16.2 2 races are required to be completed to constitute a series.

16.3 When 4 or more races have been completed, a boats series score will be the total of her race scores excluding her worst score.

## **17 SAFETY REGULATIONS**

A boat that retires from a race shall notify the race committee as soon as possible.

## **18 RADIO COMMUNICATION**

18.1 The Race Committee shall use VHF Ch. 69.

18.2 Except in an emergency, a boat that is racing shall not make voice or data transmissions and shall not receive voice or data communication that is not available to all boats.

## **19 PRIZES**

Prizes will be given as follows:

First and second places for each class for the Lightship Race and the overall Fall Series. We will try to announce results and award recipients over VHF Ch. 69 as soon as possible after the last boat finishes.

Awards shall be available at the table on the PYC porch.

The Lightship Race prizes will be available as soon as possible after that days racing.

The Fall Series prizes will be available as soon as possible after the last race October 10.

The Moore Trophy is awarded to the winner of the Lightship Race.

The Lippo Trophy is awarded to the PYC member boat scoring best overall in the Fall Series

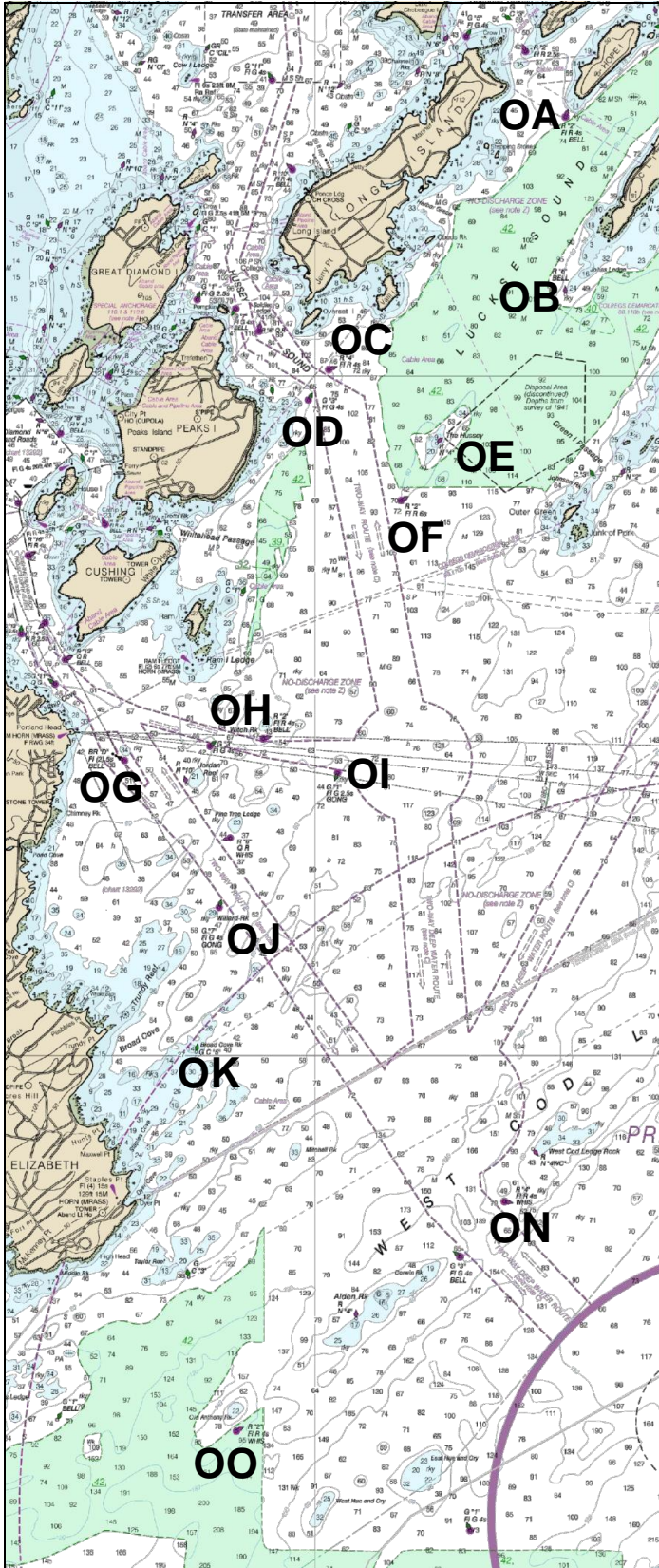
## **20 DISCLAIMER OF LIABILITY**

Competitors participate in the regatta entirely at their own risk. See RRS 4, Decision to Race. The organizing authority will not accept any liability for material damage or personal injury or death sustained in conjunction with or prior to, during, or after the regatta.

## **21 INSURANCE**

Each participating boat shall be insured with valid third-party liability insurance with a minimum cover of \$300,000 per incident or the equivalent.

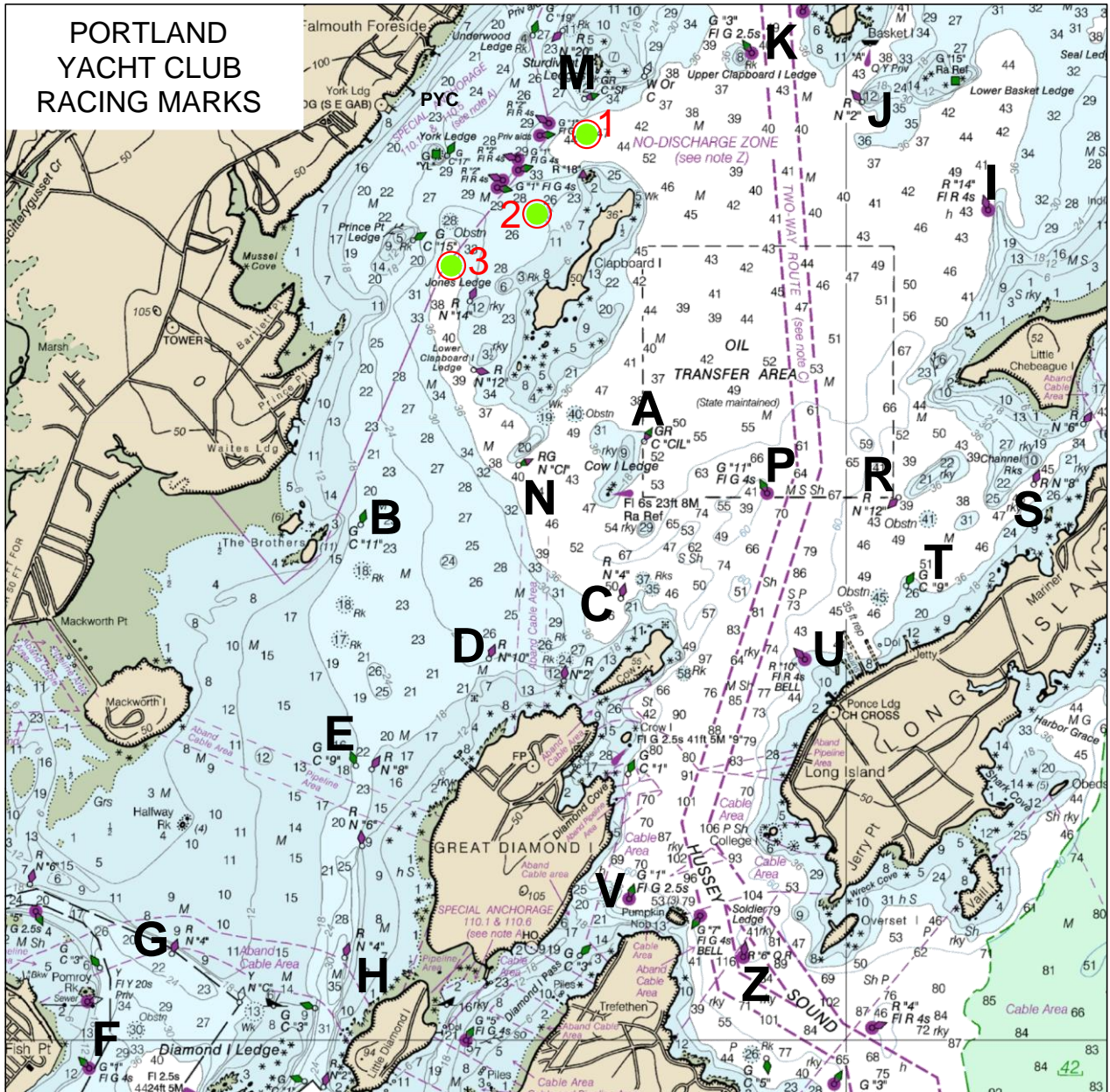
# Attachment B – Mark List



## Offshore Race Marks

- OA R"2" FI R 4s Bell S Hope Is.
- OB R"6" Bell SW Cliff Is.
- OC R"4" FI R 4s E Hussey Sound
- OD G"3" FI G 4s SE Hussey Sound
- OE N"4" The Hussey
- OF R"2" FI R 6s SW The Hussey
- OG BR"D" FI Bell SE Portland Head
- OH R"2" FI Bell Witch Rock
- OI G"1" FL Gong SE Witch Rock
- OJ G"7" FL Gong Willard Rock
- OK G C"5" Broad Cove Rock
- OL G"1E" FI G East Cod Ledge
- OM RG N "BS" Bulwark Shoal
- ON R"4" FI Whis West Cod Ledge
- OO R"2" FI Whis Old Anthony Rk
- OP RW"P" MO(A) Lightship replacement

# PORTLAND YACHT CLUB RACING MARKS



A	GR C "CIL"	N Cow Is. Ledge	M	GR C "SI"	S Sturdivant Is. Ledge
B	C "11"	E The Brothers	N	RG N "CI"	W Cow Is. Ledge
C	N "4"	NW Cow Is.	P	G "11" FI G 4s	E Cow Is. Ledge
D	N "10"	NW Great Diamond Is.	R	N "12"	W Channel Rocks
E	C "9"	W Great Diamond Is.	S	N "8"	Channel Rocks
F	G "1" FI G 4s	Fish Point	T	C "9"	W Long Is.
G	N "4"	NE Pomroy Rk	U	R "10" FI Bell	Ponce Landing
H	N "4"	NW Little Diamond Is.	V	G "1" FIG2.5s	W Pumpkin Knob
I	R "14" FI R 4s	W Indian Pt. Cheb. Is.	W	Drop	Windward Mark
J	N "2"	SE Basket Is.	X	Drop	Start/Finish
K	G "3" FI G 2.5s	SW Basket Is.	Z	R "6" QR	Soldier Ledge, Hussey
L	Drop	Leeward Mark		Thursday Night Starting Areas:	

Mark selection is by a committee of Race Officers and volunteers from Centerboard and Portland Yacht Clubs. Mark List compiled by T. Tolford. Graphics by J. Cady. Publish date: Spring 2020.