

**COACH'S INFORMATION  
2023 BATTLE OF THE BAY**

*Updated 9 July 2023*

Dates:	July 10, 2023 – fun events; check in July 11 -12, 2023 - racing
Location:	Boothbay Harbor Yacht Club 140 Western Avenue West Boothbay Harbor, ME 04538
Directions:	From Coastal Route 1, take Route 27S through Edgecomb, Boothbay and into Boothbay Harbor. As you enter Boothbay Harbor, follow the signs to Southport. After you pass the Urgent Care Facility on Route 27 on your left, you will go through a sharp “S Curve”. The Yacht Club is on your left after the S Curve. There is a sign at the entrance to the parking lot. The Parking lot next to the Tennis Courts is also BHYC parking. Please do not park in the Post Office parking lot.
Coach Boats:	<p>Coach Boats will be launched at the Department of Marine Resources across the harbor from the Club, the address is 194 McKown Point Rd, West Boothbay Harbor, ME 04575. Coach Boats cannot be launched from the Club property. Tide is a factor on the ramp. <b><u>There is a rock off of the ramp, so please use caution. It is marked by a buoy.</u></b></p> <p>Trailers and cars can be left at the Aquarium lot, or if there is not space at Hodgdon's marine in southport. When the coach boats are launched, they will be directed to BHYC floats on a first come first serve basis and, if required, to moorings off of the Club so as to keep as much float space available as possible for the participants. Tall center console boats should not be stored on the inside of the junior docks, as they will not fit out at high tide.</p>
Tides (around launching & hauling times)	<p>Boothbay harbor has an approximately 10' tidal swing</p> <p>Monday, July 10 – High Tide – 5:56 PM</p> <p>Tuesday, July 11 High Tide – 6:24 AM Low Tide – 1:26 PM High Tide – 6:53 PM</p> <p>Wednesday, July 12 High Tide – 7:51 AM Low Tide – 2:25 PM</p>
<b>**ATTENTION** OVERHEAD ELECTRIC WIRES</b>	There are overhead electric wires in the street, and on the side of the property to the northeast, that have to be avoided. Bringing boats across the street or onto the lawn with a mast up <b>will not</b> be permitted. <b><u>Please watch your sailors carefully as they move/launch boats.</u></b>

Boat Prep	<p><b>420/Laser/Feva</b> - Rig the boats on the lawn as much as possible (at least jib up and main partially rigged - fully rig if possible) and wheel down the pier . Bring the dolly back and store it along the fence. Please keep your Club's gear consolidated!</p> <p><b>Opti/Tera</b> - Please bring your boats down onto the docks on Monday or first thing Tuesday morning. Boats will be stored on the racks in available spaces or on the dock itself. Boats can be wheeled down the larger Pier, or carried down the smaller. During times of launch, larger boats will be given priority on the larger pier.</p>
Tie Off	<p><b>420.</b> Limited tie up will be available alongside the launch pier or on nearby floats. Please plan to have your group launch together and sail out as quickly as possible.</p> <p><b>Opti.</b> Optis can rig on the Junior float, or paddle across and rig on the dinghy float if needed.</p>
Storage	<p><b>420:</b> 420s will be stored on the lawn on their dollies overnight</p> <p><b>Opti.</b> Optis will be stored on the Opti rack float and the Junior floats. Any overflowed will be assigned spots by the waterfront staff.</p> <p><b>Coach Boats.</b> Coach Boats will be stored on the BHYC floats on an as-available basis or on Club moorings at no charge.</p>
Coach Boat Required Equipment	<p>Each Coach Boat is <b>required</b> to have the following equipment aboard:</p> <ol style="list-style-type: none"> <li>1. All Coast Guard Required equipment for the size boat</li> <li>2. A first aid kit</li> <li>3. One (preferably 2) VHF radios</li> <li>4. A grease pen</li> <li>5. A cell phone</li> <li>6. Water for the sailors you are responsible for</li> <li>7. Coach flag (we will provide)</li> </ol>
Coaches Registration:	<p>All coaches will be required to register upon arrival and provide their cell phone number to BHYC.</p>
Coaching:	<p>Active coaching in the bottom half of the fleet during races will be allowed on the OPTI/Terra Green Fleet line. No other coaching will be permitted during the races for any other participants. Coach boats will be permitted to follow the races <b>provided that they do not interfere with the racing.</b> If this restriction is not complied with, by any coach, either that coach or all coaches, at the discretion of the Race Committee, will be requested to stay in a designated coach area. BHYC recognizes that this Regatta is both a competition and a learning experience, and therefore asks that the coaches help self-patrol this restriction so that the sailors can get the best coaching possible without interference with the racing. Green fleet coaches, please monitor the radio and be ready to assist with moving marks as requested by RC</p>
Flags:	<p>Coach Boats will be required to display blue or green flags which will be provided.</p>

Lunches:	Lunch will be provided to all race participants and coaches. <b>COACHES WHO HAVE OTHERS WITH THEM ON THEIR BOATS, PLEASE ADVISE THEM TO BRING THEIR OWN LUNCHES AS LUNCHES WILL NOT BE PROVIDED FOR THEM.</b> Lunches will be picked up near registration on the back deck of the main club building.
Tuesday after racing:	There will be a “rolling” pizza party for the race participants, coaches and BHYC support boat personnel after the racing on Tuesday. The Club will start serving this at approximately 4:00 PM or as the participants come in off the water. This will be on the back lawn of the sailing center. Others may purchase a pizza dinner for \$15.00 per person.
Hauling	Prior to haul out, all trailers except coach boat trailers will be brought, by adults or coaches, to the dirt parking lot by the Club House, some loading may be allowed at the post office lot (if after hours) or by direction of greeting and waterfront staff at the main lot. Please do not bring trailers in until boats are ready to load. <b>Coach boats must be hauled at DMR.</b>
Awards	As soon as all protests, if any, are concluded and scoring has been completed, the trophies will be presented. All participants, coaches and support boat personnel are strongly encouraged to attend and recognize not only the winners but all who participated in the regatta.

We look forward to seeing you at Boothbay Harbor Yacht Club.

## Safety Plan

All coaches are expected to monitor the appropriate VHF channel for their course. All general inquiries to the RC or OA should be via VHF. If any sensitive or private information needs to be transmitted, it should be via cell phone.

In general, communication from coaches would be with the RC and not with shore support.

Championship Line - VHF 78a (updated)

Cell Phone 207 776 2320

Green Line - VHF 72

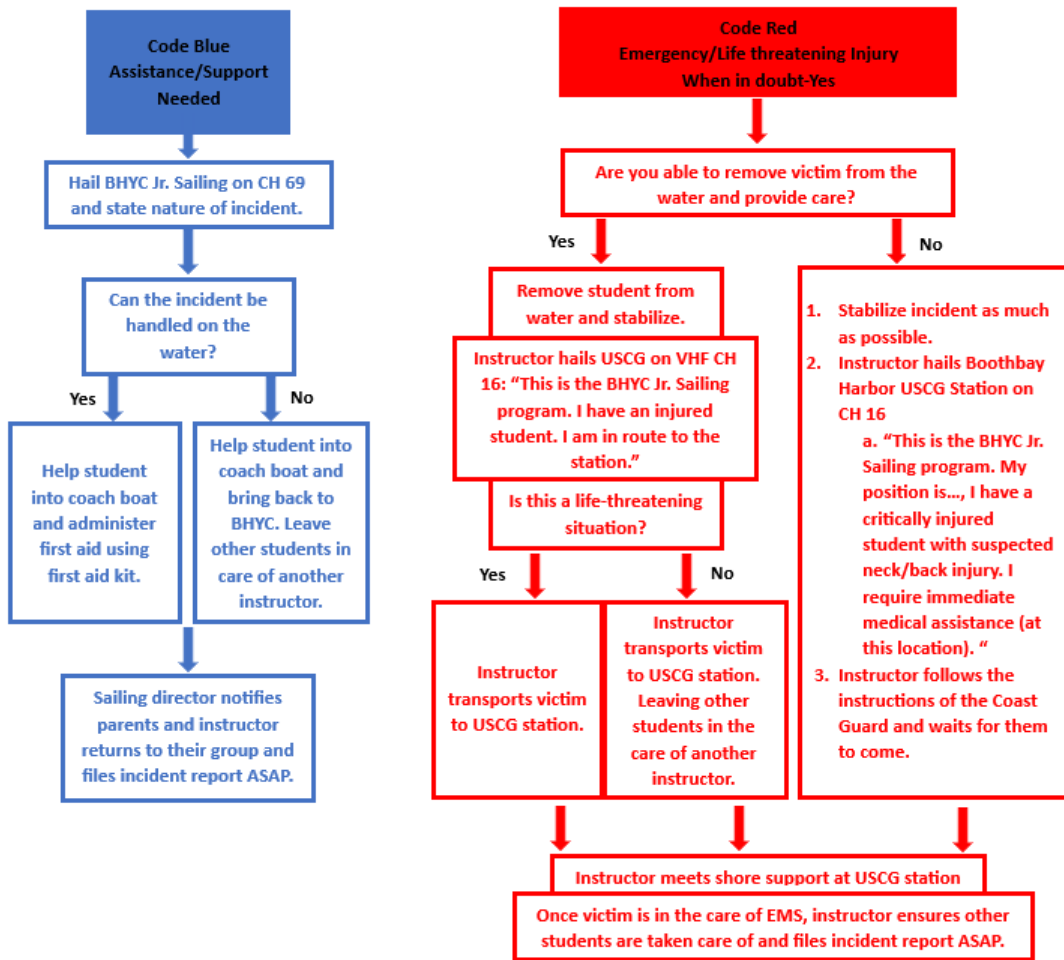
Cell Phone 207 776 2222

Shore Support - VHF 9

Cell Phone 207 633 5750

## Medical Emergency Response

*We ask all coaches to monitor both 16 and the appropriate VHF channel for the racing area they are at. In any case requiring EMS support, the rendezvous point will be the Coast Guard station across the harbor from us, and members of the Coast Guard will meet you at the end of their dock on the side of their shed, with EMS meeting you there. We also ask each coach to have a grease pencil with them. Coast Guard hailing should be done via channel 16.*



## Responses to Weather Emergencies

**Imminent threat** - In the unlikely event that the OA decides that there is an imminent and severe weather threat they will instruct, via VHF, all coaches to abandon boats and ferry sailors to shore.

1. Sailors should turtle boats
2. Coach should mark 1 large 'x' on the bottom of the hull (grease pencil) to signify each sailor that has been removed from that boat
3. Once your boat is full, or you have gotten everyone in the vicinity, proceed at the maximum safe speed to the docks. Remember that sailors will be in the water near their boats

IN THIS UNLIKELY SITUATION, HELP ANY/ALL SAILORS NEAR YOU. DO NOT WORRY ABOUT WHAT TEAM THEY ARE ON, BE SURE TO MARK THE BOATS

**Fast approaching weather, no time to haul** - If severe storms are expected, and the OA decides that there is enough time, the RC will instruct, via radio, all coaches to tow sailors to shore. This decision is made when there is enough time to avoid the storm, but not to haul all of the boats.

1. Rounds up all sailors near you on a tow line and proceed at the maximum safe speed into the harbor. Boats should be either anchored just outside the mooring field, tied to the white nun, or moored on an empty mooring that has a red square on it
2. If time allows, turtle the tow line
3. Bring sailors to shore

**Storms coming, racing is done** - this will be called if the OA determines that there will be no more racing, but that we have time to end operations as normal.

1. Tow sailors to shore (unless sailing would be faster)
2. Haul boats as normal

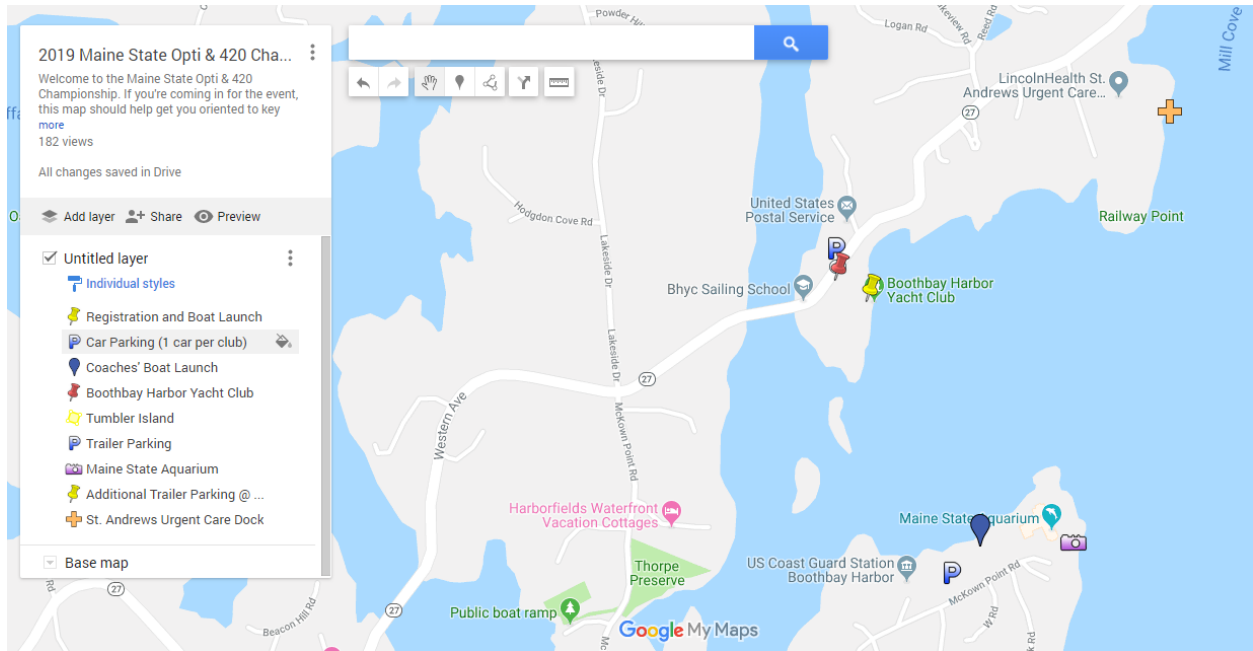
**\*\*please be aware of your wake, especially as you get closer to the docks, bashing boats together will not make it go any faster or soother\*\***

Please be aware that the RC may combine some of these approaches, so be ready to follow instructions.

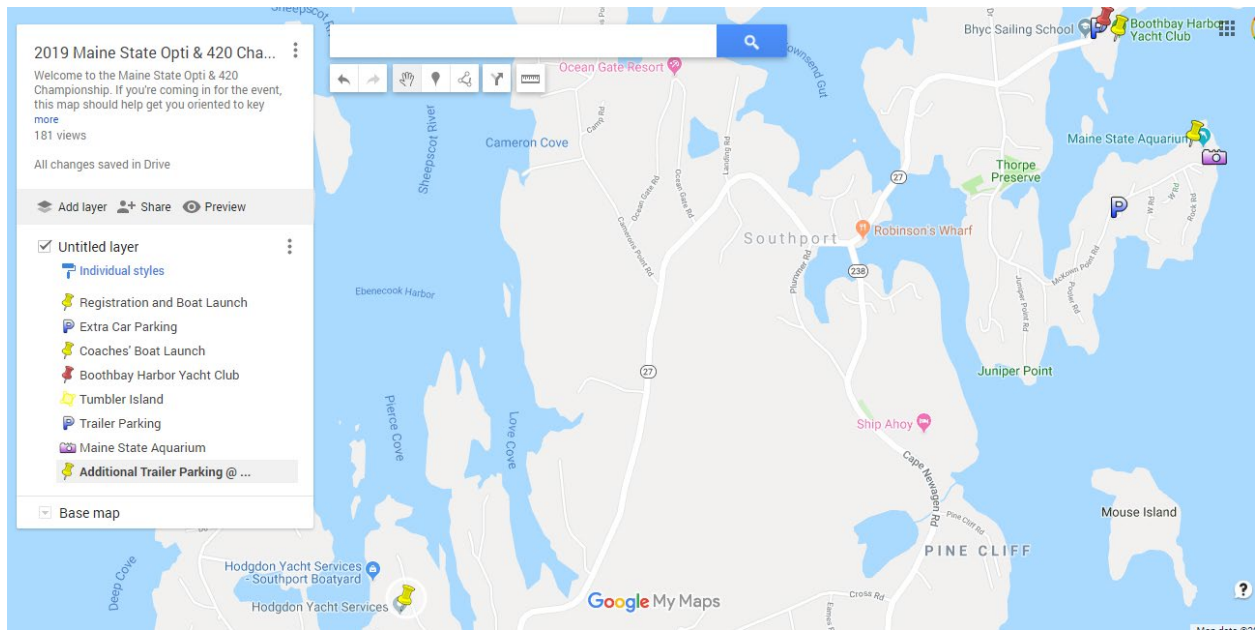
## 2023 Battle of the Bay at Boothbay Harbor Yacht Club

For an online map and directions, see

<https://maps.google.com/maps/ms?msid=208086623047517033696.0004e1299c7c5f8c251d9&msa=0>



 <b>Boothbay Harbor Yacht Club</b> 140 Western Avenue West Boothbay Harbor, ME 04538
 Registration and Boat Launch
 Car Parking – one car per club, please
 Trailer Parking and Coaches' Boat Launch Trailer Parking and the Coaches' Boats will be launched and recovered at the Maine Department of Marine Resources toward the end of Mckown Point Road. Follow signs to the Aquarium. The boat launch is on your left.



Additional Trailer Parking is available at Hodgdon Yacht Services on Southport Island -  
100 Ebenecook Rd, Southport, ME 04576