

# Event Sailing Instructions

## AMENDMENT #1 (RESTRICTED AREA)

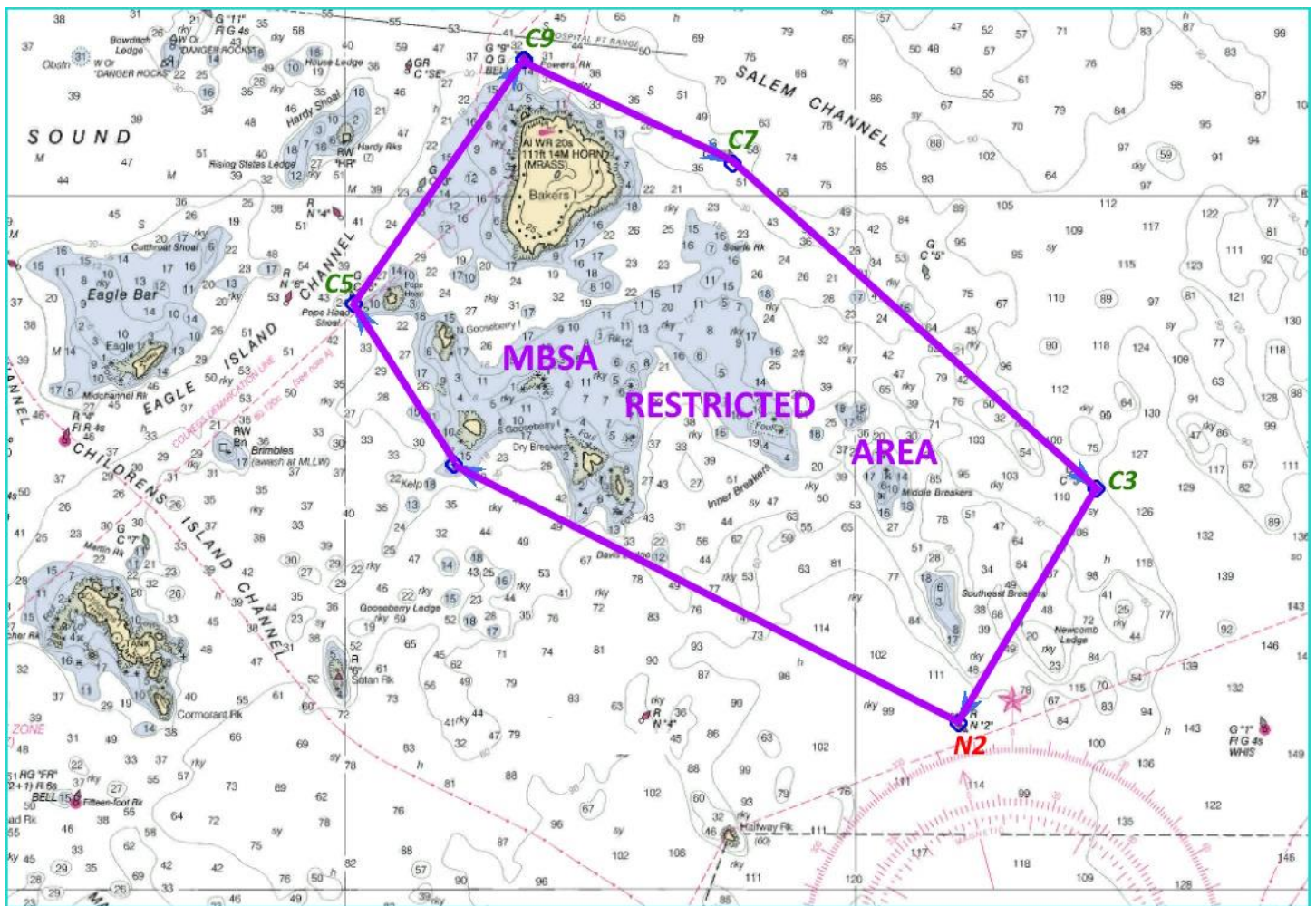
### RESTRICTED AREA BOUNDARY

This is an addition to the Event Sailing Instructions (ESI) and applies to all EYC Pursuit Races. This is a navigational safety issue.

The Mass Bay Sailing Association (MBSA) has defined a Restricted Area within the general vicinity that we race in. It is fully defined in the MBSA Yearbook. This Restricted Area is hereby made part of the EYC Pursuit Races. A boat racing in these events shall not improperly enter the Restricted Area.

Yachts entering this Restricted Area must leave between the same two boundary markers that they passed when entering. The penalty for entering this area is disqualification (DSQ).

If any boundary marks on the chart are used as marks of the course, passing them on their required side is allowed.



*/s/ John Cochrane*

John J. Cochrane, PRO  
EYC Race Committee