

ONE DAY CHASE RACE
SAILING INSTRUCTIONS
AUGUST 5, 2017

1. RULES

- 1.1. The Cottage Park Yacht Club Regatta to benefit Make-A-Wish will be governed by the *rules* as defined in the *Racing Rules of Sailing, 2017 – 2020*.
- 1.2. By participating in this regatta, a competitor grants to the Organizing Authority and its sponsors the right in perpetuity to make, use and show, from time to time at their discretion, any photographs, motion pictures and live, taped or filmed television and other reproductions of him or her during the period of the competition without compensation.
- 1.3. Boats are required to check-in before their first start of the day with boat name, number and number of souls on board. Boats in the racing area that are not starting a second or subsequent race must notify the Race Committee before leaving the racing area. Boats that withdraw from racing must advise the Race Committee as soon as reasonably possible.

- 2. ADVERTISING** – Shall be restricted to Category A in accordance with ISAF Regulation 20, Advertising Code, and the relevant class rules.

3. DIVISIONS

- 3.1. Three divisions are planned, Spinnaker, Non Spinnaker, and Multihull. This may change depending on the number of entries. In addition there may be PHRF division splits for course length.
- 3.2 PHRF ratings will apply. Boats without an official rating certificate will be assigned a rating.

4. SCHEDULE OF EVENTS

FRIDAY AUG. 4	7:00 pm	Late Registration, Skippers meeting/Assignment of start times
SATURDAY AUG. 5	8:00 am	Late Check In and Continental Breakfast
	12:00 noon	Chase Race Start
	6:00 pm	Dinner/Raffles
	7:00 pm	Awards

- 5. NOTICE TO COMPETITORS** – Notice to Competitors will be posted on the Official Notice Board located in the ballroom of CPYC. They may also be posted at www.cpyc.org under CPYC Regatta to Benefit Make-A-Wish or www.regattaman.com

- 6. CHANGES TO THIS SI** – Will be posted before 9AM on the day it will take effect.

- 7. RADIO:** The Chase Race Committee will use VHF Channel 72 for communicating with the fleet.

- 8. VENUE:** All vessels should meet in the vicinity of Yellow Nun “E” (Mark #5), 1.15 miles west of Deer Island Light by 11:30 AM. The Race Committee will lead the fleet to the proper starting line if necessary and will try to start as close to 12 noon as possible.



9.0 STARTING PROCEEDURE

9.1 Starting sequence

11:55	WARNING	Code Flag A goes up, Horn
11:56	PREP	Code Flag P goes up, Radio Time Announcement
11:57		Radio Time Announcement
11:58		Radio Time Announcement
11:59	ONE MINUTE	Code Flag P goes down, Radio Time Announcement
12:00	START	Red Start Flag goes up, Horn, Announcement

9.2. Start time

Your assigned start time is the amount of time **AFTER the START**. (Red Flag and Horn) The Race Committee will make an effort to announce each minute after the start. This notice is informational. Skippers are responsible for keeping track of their own starting times.

9.3. The race committee will use GPS time for all signals. In the event of a Postponement for any reason, the committee will attempt to use GPS time with an exact minute delay of the start. Example: the committee will announce the new starting time is 12:45:00 PM.

9.4. You have been assigned two starting times, one for the Short Course, Course B, 11.8 miles and one for the Long Course,(Course A), 15 miles. The committee will post the course approximately 5 minutes before the warning.

9.5. All boats **MUST KEEP CLEAR** of the course side of the starting line from the warning signal until one minute before their starting time.

10. COURSES: One of the following two courses, determined by wind speed, direction, and number of competitors, will be used. It is expected that Multihulls and Spinnaker competitors will use Course A; Non spinnaker monohulls will use Course B. The course is subject to change. The course will be posted on the Committee Boat and/or announced on VHF radio.

Course A Long Course

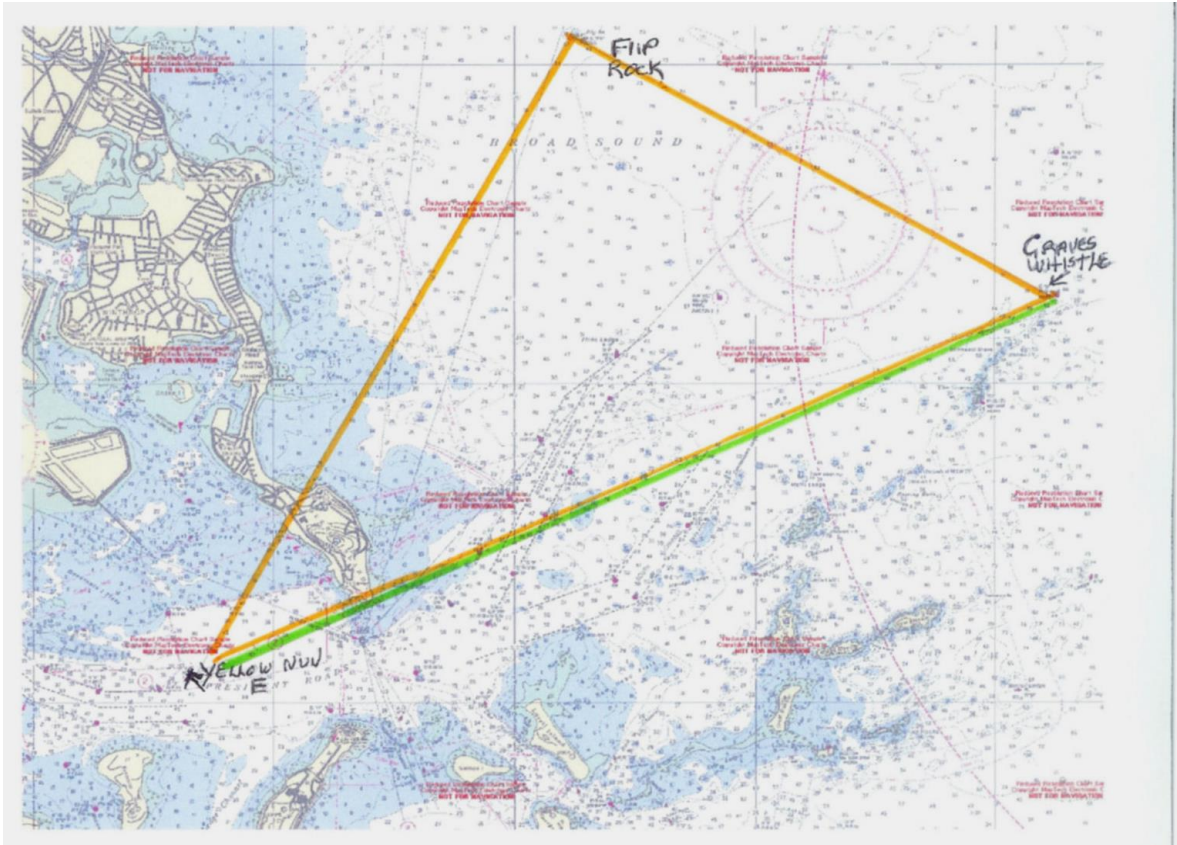
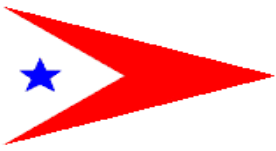
START (Vicinity of Yellow Nun "E")
Flip Rock Gong (RG"FR")
Graves Whistle (FI G "5")
FINISH(Vicinity of Yellow Nun "E")
Total Distance 15NM

Course B Short Course

START (Vicinity of Yellow Nun "E")
Graves Whistle (FI G "5")
FINISH(Vicinity of Yellow Nun "E")
Total Distance (11.8 NM)

ALL MARKS ARE TO BE LEFT TO STARBOARD EXCEPT AT THE FINISH AS THE SIGNAL BOAT MAY NOT MOVE.

Following course map is illustrative and should not be used for navigation. All land obstructions and navigational marks shall be observed, i.e. Deer Island Light, Faun Bar, etc. (Courses A is orange, Course B green)



11. TIME LIMIT: If retiring from the race, please notify the Race Committee on Channel 72. The time limit for the race is 4:30 PM.

12. PROTESTS: Due to the nature of the race, protests are discouraged and skippers urged to accept the alternative penalty (720) when appropriate. If a protest is necessary, it should be submitted in writing and hearings will be held at Cottage Park Yacht Club following the race according to RRS 61.

11. SAFETY: Competitors participate in the regatta entirely at their own risk. See RRS4, Decision to Race. The organizing authority will not accept any liability for material damage or personal injury or death sustained in conjunction with or prior to, during, or after the regatta.

12. PRIZES – Make-A-Wish trophies will be awarded to competitors placing first through third in all divisions

13. FURTHER INFORMATION

Contact Sue Hardy, CPYC, 76 Orlando Ave, Winthrop, MA 02152, Windjammer@cpyc.org and check the web site for directions and further information.

14. HOST CLUB

Cottage Park Yacht Club
76 Orlando Ave
Winthrop, MA 02152
617-846-2792/617-846-9801
617-846-9362 (Fax)
cpycmanager@cpyc.org
www.cpyc.org

15. REGATTA CHAIR

Janine Stanton
76 Orlando Ave
Winthrop, MA 02152
617-846-2792/617-846-9801
617-846-9362 (Fax)
MAW@CPYC.org