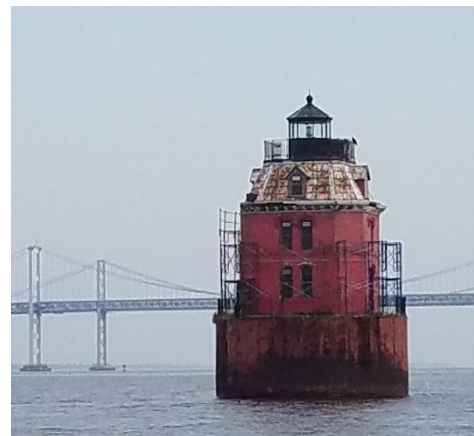
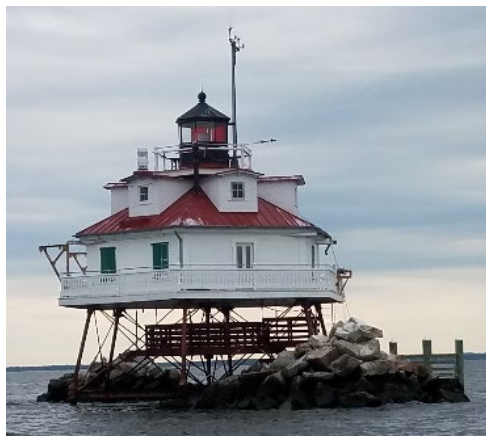


In Support of Spirit Foundation

SCC Spring Regatta Notice of Race SUNDAY, May 16, 2021



Organizing Authority: Sailing Club of the Chesapeake
CBYRA Sanction # 309
scc1944.clubexpress.com

1 Rules

The regatta will be governed by the rules as defined in the current Racing Rules of Sailing. The US Sailing SER "Nearshore Safety Equipment Requirements" apply and confirm or supplement the USCG requirements and the Racing Rules of Sailing except as amended by specific class association rules.

2 Entries

The regatta is open to any wind powered vessel. A CRCA class eligibility certificate is required for CRCA racers. Assigned ratings may be implemented if a boat does not have a current rating, or may be placed in a Portsmouth Yardstick Class with a Portsmouth Number at the discretion of the organizing authority. Assigned handicaps will be posted on the notice board by 1200 Thursday 13 MAY 2021.



www.sandraklibby.com

Thank you to our sponsors!

One design scoring is offered to any class with 4 or more entries by 1700 12 MAY 2021. CHESSS, CRCA and any one design classes so requesting shall be in the cruising division. Spinnaker and Non-Spinnaker classes will be offered. PHRF, ORR, Portsmouth, and remaining OD classes shall be in the racing division.

J/105 Class Rules are modified by Article IX of the local J-105 Fleet-3 Article/Rules. This event is designated Level 1A. J-105 Fleet-3 Articles/Rules can be found at <https://www.j105fleet3.org/rules>

You may sail with as many or few crew as you feel comfortable.

Entry Due: 1700 Wednesday 12 MAY 2021

Entry Fee: At the skipper's discretion, suggested \$10/crewmember.

All proceeds will benefit the EWE Spirit Foundation <https://www.ewespirit.org/> The EWE Spirit Foundation's mission is to honor the legacy of Geoff Ewenson by helping those facing immediate hardship bridge financial and social support gaps through mentorship, outreach, and direct financial assistance, thus creating a kind world where everyone has the resources, assistance, and opportunity to live with dignity, hope, and joy.

Online Entry: https://www.regattaman.com/def_event_page.php?race_id=679&yr=2021

Sailing Instructions: to be posted by May 1

3 Communications

Notices to competitors will be posted on the official event website

The race committee intends to make all announcements to competitors via VHF radio. The specific channel will be stated in the sailing instructions.

All boats shall carry a VHF radio capable of communicating on channels 9, 13, 16, 65, 68, 69, 71, & 72

4 Signals made ashore

Any signals made ashore will be virtual and posted on the official event website:

https://www.regattaman.com/def_event_page.php?race_id=679&yr=2021

Cruising Division

5 Schedule

Start when you want, and where you want! It just needs to be between 1100 and 1500 on Sunday May 16, and at your choice of course marks.



Thank you to our sponsors!

6 Class flags

Class flags may be flown if desired.

7 Racing area

The racing area will be the Severn River and the Chesapeake Bay between Sandy Point and Thomas Point.

8 Course and marks

The course will consist of a triangle with 3 vertices:

- Fl G "95" approximately 1100 yards SSE of Sandy Point Lighthouse
- GR C "SR" approximately 700 yards SSE of Thomas Point Lighthouse
- GC "7" approximately 500 yards NE by E of the Horn Point "shoal pole"

The attached diagram shows the course marks. The course may be sailed in either direction. All marks shall be rounded to port.

Alternate marks for lighter winds forecast:

- GC "1" off Hackett's Point
- FL R 2.5s R"2" at the mouth of the Severn River

The following marks shall always be passed on the channel side

- "1AH" at Tolly Point
- FL R 6S 15ft 4M "4" off Greenbury Point

The specific course will be posted online no later than 1200 Saturday 15 MAY 2021.

9 "Pick your own" starting and finishing lines

You can save a lot of transit time if your home port is on the Magothy, South, West, or other rivers!

Take your own start and finish times and log them online. **You may start at your choice of vertex**; you must finish at the same point. The start/finish line shall lie between the G"95" / GR C "SR" and its adjacent lighthouse, or GC"7" and an orange flag on the RC boat.

10 Time limit

No time limit for cruising division.

11 Protests

This is supposed to be fun. Don't do it! If you must, file electronically using <https://cdn.ussailing.org/wp-content/uploads/2018/01/US-Sailing-2017-2020-Protest-Form.pdf>



Thank you to our sponsors!

12 Scoring

Only one race will be held. Scores will be calculated based on the self-reported start and finish times entered online by each skipper.

13 Awards

BEER! For all sailors of legal drinking age, to be collected after finishing from a separate RC boat approximately 50 yards NW of the finish line. Cruising division boats may collect their beer while rounding GC"7", but may not file redress for any delays associated with said provisioning. Enjoy it responsibly as there will not be a formal post-race party. No further prizes will be awarded, but swag can be ordered from <https://www.ewespirit.org/ewe-stuff>

14 The lawyers made me

See RRS 4, Decision to Race. The organizing authority will not accept any liability. Competitors participate in the regatta entirely at their own risk.

Racing Division

5 Schedule

The Warning signal will be made at 1200 Sunday 16 MAY 2021 at GC"7" off Horn Point. Racing division will be a pursuit style start. The starting sequence will be posted 24 hours prior to the start.

6 Class flags

Class flags shall be flown in accordance with CBYRA Green Book.

7 Racing area

The racing area will be the Severn River and Chesapeake Bay between Sandy Point and Thomas Point.

8 Course and marks

The course will consist of a triangle with 3 vertices:

- FI G "95" approximately 1100 yards SSE of Sandy Point Lighthouse
- GR C "SR" approximately 700 yards SSE of Thomas Point Lighthouse
- GC "7" approximately 500 yards NE by E of the Horn Point "shoal pole"

Alternate marks for smaller boats and/or lighter winds forecast:

- GC "1" off Hackett's Point
- FL R 2.5s R"2" at the mouth of the Severn River



Thank you to our sponsors!

The attached diagram shows the course marks. The course may be sailed in either direction. All marks shall be rounded to port. The course length and specific marks to be used will be posted 24 hours prior to the start.

The following marks shall always be passed on the channel side **for all keelboat classes.**

- “1AH” at Tolly Point
- FL R 6S 15ft 4M “4” off Greenbury Point

9 Starting and finishing lines

The start/finish line shall lie between GC”7” and an orange flag on the RC boat.

10 Time limit

Any yacht not finishing by 1630 Sunday 16 MAY 2021 will be scored TLE.

11 Protests

This is supposed to be fun. Don’t do it! If you must, file electronically using <https://cdn.ussailing.org/wp-content/uploads/2018/01/US-Sailing-2017-2020-Protest-Form.pdf>

12 Scoring

Only one race will be held. Boats will be scored by class in the order of their finish.

13 AWARDS

BEER! For all sailors of legal drinking age, to be collected after finishing from a separate RC boat approximately 50 yards NW of the finish line. Enjoy it responsibly as there will not be a formal post-race party. No further prizes will be awarded, but swag can be ordered from <https://www.ewespirit.org/ewe-stuff>

14 The lawyers made me

See RRS 4, Decision to Race. The organizing authority will not accept any liability. Competitors participate in the regatta entirely at their own risk.

Contact

Drew Mutch (SCC RC Chair): 410-982-4877

Email: scc1944.rc@gmail.com



Thank you to our sponsors!



THE OFFICIAL TRANSPORTATION PROVIDER
FOR THE WASHINGTON NATIONALS



www.sandraklibby.com



INNOVATION ROOTED IN TRADITION

In Support of  Spirit Foundation



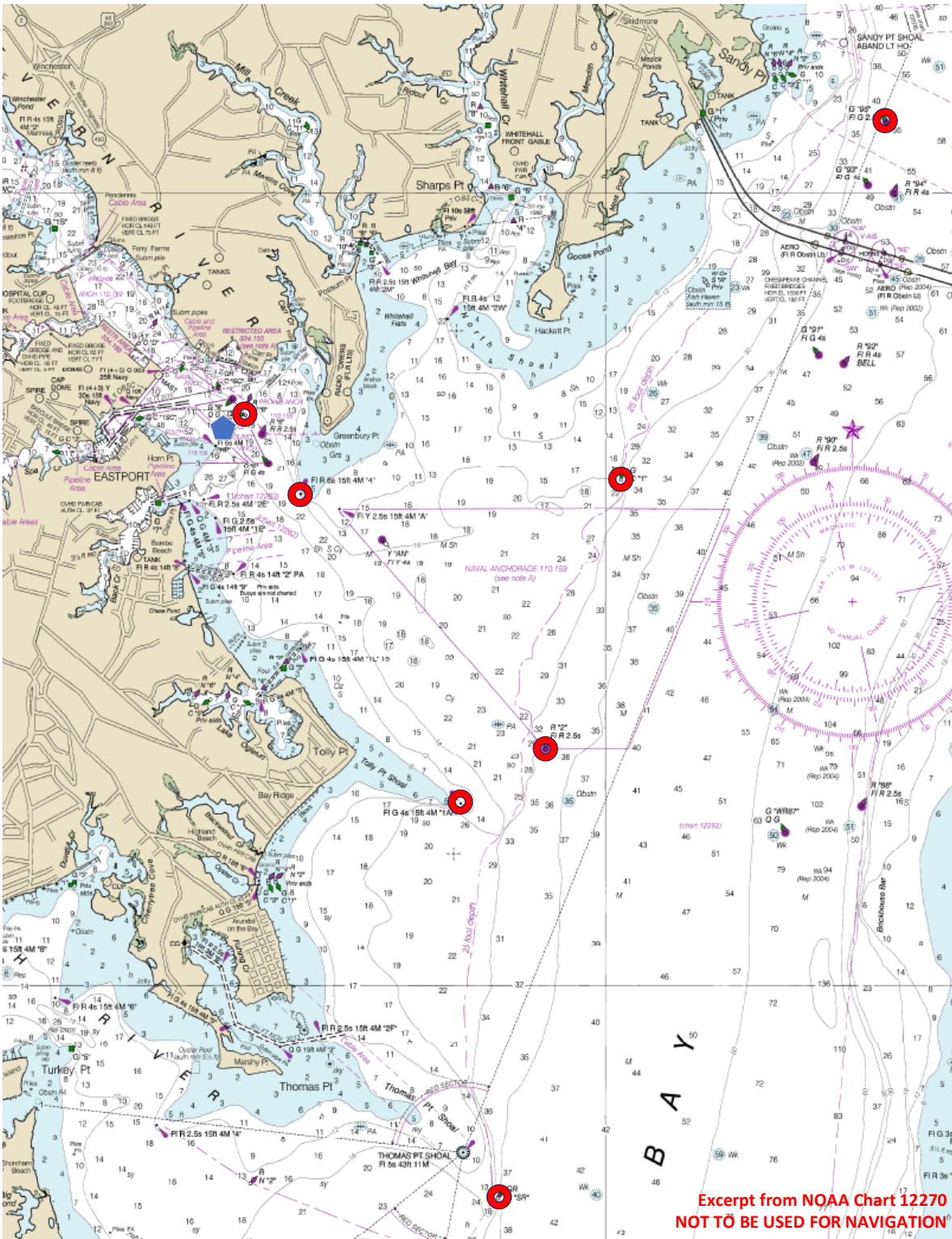
INNOVATION ROOTED IN TRADITION



www.sandraklibby.com

Thank you to our sponsors!

Appendix A – course diagram



INNOVATION ROOTED IN TRADITION



Thank you to our sponsors!