

Boothbay Harbor Yacht Club

Commodore's Cup Series

June 25 and August 6, 2022

SAILING INSTRUCTIONS

1. RULES

- 1.1 The regatta will be governed by the rules as defined in *The Racing Rules of Sailing*.
- 1.2 World Sailing Offshore Special Regulations Appendix B – [Special Regulations for inshore races](#) shall apply.
- 1.3 All boats in all classes shall carry a functioning VHF radio.
- 1.4 All boats shall comply with Federal and State safety requirements.
- 1.5 Boats racing in One Design classes shall comply with the appropriate Class Rules.


2. NOTICES TO COMPETITORS

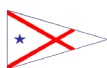
- 2.1 Notices will be placed online at https://www.regattaman.com/new_event_page.php?race_id=878&cancel_dest=calendar.php (June 25th race), https://www.regattaman.com/new_event_page.php?race_id=981&cancel_dest=calendar.php (August 6th race), and/or on the official notice board inside the BHYC "Casino."

3. CHANGES TO SAILING INSTRUCTIONS

- 3.1 Changes to the Sailing Instructions will be posted before 1030 hours on the day it will take effect, except that any change to the schedule of the races will be posted by 2000 on the day before it will take effect.
- 3.2 Changes may be made to the Sailing Instructions on the water by the Race Committee per RRS 90.2(c), The change will be announced on the VHF radio. This changes RRS Race Signals.

4. SCHEDULE

- 4.1 Skippers' Meeting will be held at 12:00 hours on Saturday
- 4.2 To alert boats that a race or sequence of races will begin soon, the orange starting line flag will be displayed with one sound at least five minutes before a warning signal is made.
- 4.3 First Warning signal Saturday is scheduled for 1300 hours.
- 4.4 The Principal Race Officer determines the number of races each day. When the Race Committee (RC) displays Code Flag 'R'  from the RC Signal Vessel at the finish line racing will continue.
- 4.5 No Warning Signal after 1500 hours.



2022 BHYC Commodore's Cup Sailing Instructions

5. CLASS FLAGS

Cruising	Code Flag "B"	
Racing 1	Numeral Pennant "1"	
Racing 2	Numeral Pennant "2"	
Racing 3	Numeral Pennant "3"	
J/22 Class	Numeral Pennant "4"	
J/80 Class	J/80 Class Flag	
BHOD Class	BHOD Class Flag	

6. COURSES **all announcements by radio**

- 6.1 For Windward-Leeward Courses, no later than the warning signal, the RC Signal Vessel will announce the course by VHF radio. All marks will be left to port.
- 6.2 Alternately, the course may be signaled on the RC signal vessel using letters indicated in table SI 7.1 below and on the chart on the last page of these sailing instructions. All marks to be left to port unless the letter for the mark is followed by a plus sign (+) in which case the mark is to be left to starboard. Laminated course charts are available at the BHYC Ships Store for \$10.00.
- 6.3 NOTE: New charts were printed in 2022. For the most recent information please use a current race chart. Race charts are not to be used for navigation purposes.

7. MARKS:

- 7.1 The following government navigational aids or drop marks may be used as follows (see chart in Addendum on last page):

A	N 43 46.4 / W 069 39.0	G Bell "1C" S of Cuckolds Light
C	N 43.45.6 / W 069.41.1	R Bell "2SR" Approx. 1-mile SW of Mark "I" (not on chart)
F	N 43.44.7 / W 069.37.1	RW "TM" Gong off Damariscove Harbor (SW of entrance)
G	N 43 48.4 / W 069 34.8	RW Bell MO(A) "HL" 0.88 nm NE by E of Ram Island Light
I	N 43.46.2 / W 069.33.7	G "1" on Outer Heron Island Ledge
J	N 43 48.5 / W 069 36.4	N "6" in Fisherman Island Passage
K	N 43 49.7 / W 069 37.7	Portable mark near N "6" off Spruce Point, Boothbay Har or N "6" itself if no mark present
L	N 43 48.9 / W 069 38.2	R "4" Fl R 2.5s NW of Squirrel Island
M	N 43 50.3 / W 069 38.2	Portable mark near R "8" Fl R 4s NW of Tumbler Island or use R "8" itself if no mark present
O	N 43 48.4 / W 069 35.8	G "3" between Ocean Point and Ram Island
P	N 43 49.1 / W 069 34.8	GR gong "DR" S of Little River
Q	N 43 49.3 / W 069 38.4	GR "BL" S of Burnt Island
S	N 43 50.2 / W 069 36.4	G "3" S of Cabbage Island in Linekin Bay
T (approx.)	N 43 47.6 / W 069 38.5	Drop mark at the 52' spot NE of Newagen
U (approx.)	N 43 47.1 / W 069 37.4	Drop mark at the 32' spot S of Squirrel
V (approx.)	N 43.50.1 / W 069.38.5	Drop mark NW of Mouse Island
W (approx.)	N 43 48.1 / W 069 36.8	Drop mark at 16' spot W of Fisherman Island at Wylie Rock
X (approx.)	N/A	Drop mark at location specified by Race Committee

8. AREAS THAT ARE OBSTRUCTIONS

- 8.1 Boats shall not sail between mark "A" and the Cuckolds when mark "A" is not a designated mark of the course.
- 8.2 Boats shall not sail between mark "J" and Ocean Point when mark "J" is not a designated mark of the course.
- 8.3 Boats shall not sail between Fisherman's Island and The Hypocrites.



2022 BHYC Commodore's Cup Sailing Instructions

- 8.4 Boats shall not sail between Fisherman's Island and Ram Island.
8.5 Boats shall not sail between Tumbler Island and Spruce Point.

9. COURSE LEGS, MAGNETIC BEARINGS, DISTANCE

Leg	Distance (NM)	Bearing(s)	Reciprocal(s)
K-T	2.13	211	031
K-A	3.07	215	035
K-L	0.78	219	039
K-M	0.68	350	170
K-N via R8	1.21	350/016	170/196
A-J	2.50	064	244
T-J	1.76	079	259
L-S via N2	1.85	072/054	252/234
S-K via N2	1.37	236/310	056/130
J-G	1.14	110	290
J-K	1.53	336	156

10. **THE START** – Races will be started in accordance with RRS 26. The race committee may announce at skippers meeting the Appendix U audible 3-minute start may be used for classes if few boats assemble.

11. STARTING and FINISH LINE

- 11.1 Unless otherwise announced, the starting line will be between a staff displaying an ORANGE flag on the RC Signal Vessel and an inflatable mark.
- 11.2 A limiting mark may be streamed from or near the signal vessel. Boats striking this limiting mark or sailing between the mark and the signal vessel will be considered in violation of RRS 31.
- 11.3 Boats not in the starting sequence shall avoid the close proximate starting area.
- 11.4 The Race Committee will attempt to hail or broadcast over the designated VHF channel: **Ch 72** boats deemed on the course side (OCS) at the start. Failure of a boat to see or hear her recall notification will not be grounds for redress. The failure to hail, or the hail of some but not all, or untimely hail shall not be grounds for granting redress. **This changes Rule 62.1(a).**
- 11.5 The Finish Line shall be between a solid BLUE flag on the RC Signal vessel and a nearby mark. The BLUE flag shall be on the side of the RC Signal Vessel closest to the finishing mark. If the flag is on the Starboard side of the committee vessel, boats shall pass that side of the boat to finish.

12. CHANGES TO THE NEXT LEG OF THE COURSE

- 12.1 To change the next leg of the course, the race committee will move the next mark (or finish line) to a new position.

13. PENALTY SYSTEM


- 13.1 For the Cruising Division ONLY the Two-Turns Penalty is replaced with One-Turn Penalty, this changes the first sentence of **RRS 44.1**.

14. TIME LIMIT

- 14.1 The time limit for each race is four hours.
- 14.2 Time limits for boats to finish after the first boat in class sails the course and finishes are as follows: Cruising class 90 minutes, racing classes 45 minutes.
- 14.3 Boats failing to finish within the specified time above after the first boat in class sails the course and finishes will be scored Did Not Finish without a hearing. **This changes rules 35, A4 and A5.**



15. PROTESTS

- 15.1 Protest forms are available from the race committee or online.
- 15.2 For each class, the protest time limit is 60 minutes after the last boat has finished the last race of the day or the race committee signal vessel docks, whichever is later.
- 15.3 Code flag "B"  will be displayed on the signal mast at BHYC during the time protests may be filed. It will be lowered with one sound when the time limit expires.
- 15.4 Notices will be posted no later than 30 minutes after the protest time limit to inform competitors of hearings in which they are parties or named as witnesses. Hearings will be held in the protest room, located at the BHYC Sailing & Education Center, beginning at the time posted.
- 15.5 Notices of protests by the race committee, technical committee or protest committee will be posted to inform boats under RRS 61.1(b).
- 15.6 On the last scheduled day of racing a request for redress based on a protest committee decision shall be delivered no later than 30 minutes after the decision was posted. This changes RRS 62.2.

16. SCORING

- 16.1 The low point scoring system, **RRS Appendix A4** shall be used.
- 16.2 One race shall constitute a series.
- 16.3 PHRF and Cruising Division races will be scored using PHRF Time on Distance scoring.

17. RADIO COMMUNICATION

- 17.1 The race committee will monitor **VHF channel 72** for emergency transmissions. The race committee will also be using **VHF channel 72** for working communications and may employ an "open mike" policy. Boats may monitor **VHF channel 72** but are advised that any race committee communications are unofficial and made either for race management purposes or as a courtesy to the competitors.

18. SAFETY

- 18.1 Boats shall check-in with the Race Committee before the start of the race by sailing past the stern of the RC signal vessel on starboard tack and **hailing their sail number and number of people on board** and receiving confirmation from the Race Committee, alternatively a boat may call the RC on Channel 72 with the same information. Check-in must be acknowledged by the RC Signal Vessel.
- 18.2 A boat that retires shall notify the RC as soon as possible.

19. PRIZES AND TROPHIES

- 19.1 In divisions with 6 or more entries, Commodore's Cup series prizes will be given to first, second, and third place boats in each PHRF division, the Cruising division, and each One Design division. First and second place prizes will be awarded to classes/divisions with 3 to 5 entries.
- 19.2 BHYC members that participate in both dates of the Commodore's Cup will be eligible for the Commodore's Cup Perpetual Trophies:
 - 19.2.1 Commodore George Cochrane Cup - for the BHYC member that is the winner of the cruising class.
 - 19.2.2 Commodore Harmanus Swan Cup - for the BHYC member that is the winner of the BHOD class.
 - 19.2.3 James Geier Cup - for the BHYC member that is the winner of the PHRF racing fleet.
 - 19.2.4 Commodore John Chapman Cup - for the BHYC member that is the winner of the J/22 class.
 - 19.2.5 Commodore Al Custer Trophy - for the BHYC member that is the winner of the J/80 class.
- 19.3 Boats with a valid rating certificate issued by PHRF-New England and which are registered as members of the Gulf of Maine Ocean Racing Association (GMORA) may be scored as part of the GMORA Boothbay Region and Overall series.



20. DISCLAIMER OF LIABILITY

- 20.1 Competitors participate in the regatta entire at their own risk. See **RRS 4, Decision to Race**. The organizing authority accepts no liability for material damage, personal injury or death sustained in conjunction with or prior to, during, or after the regatta.

21. INSURANCE

- 21.1 Each participating boat shall be insured with valid third-party liability insurance with a minimum coverage of \$300,000 per incident or the equivalent.

22. RACE OFFICIALS

RC PRO – PC Liz Rettenmaier or appointee.

Protest Committee Chair – Rear Commodore Jon Dunsford plus appointee.

Addendum A

Marks will be announced by the race committee and may be shown at the Skippers Meeting.

Pending on number of boats, marks will be limited to a windward and leeward mark for a short series of class races. Any longer course, including cruising class, will depend on Coast Guard marks.

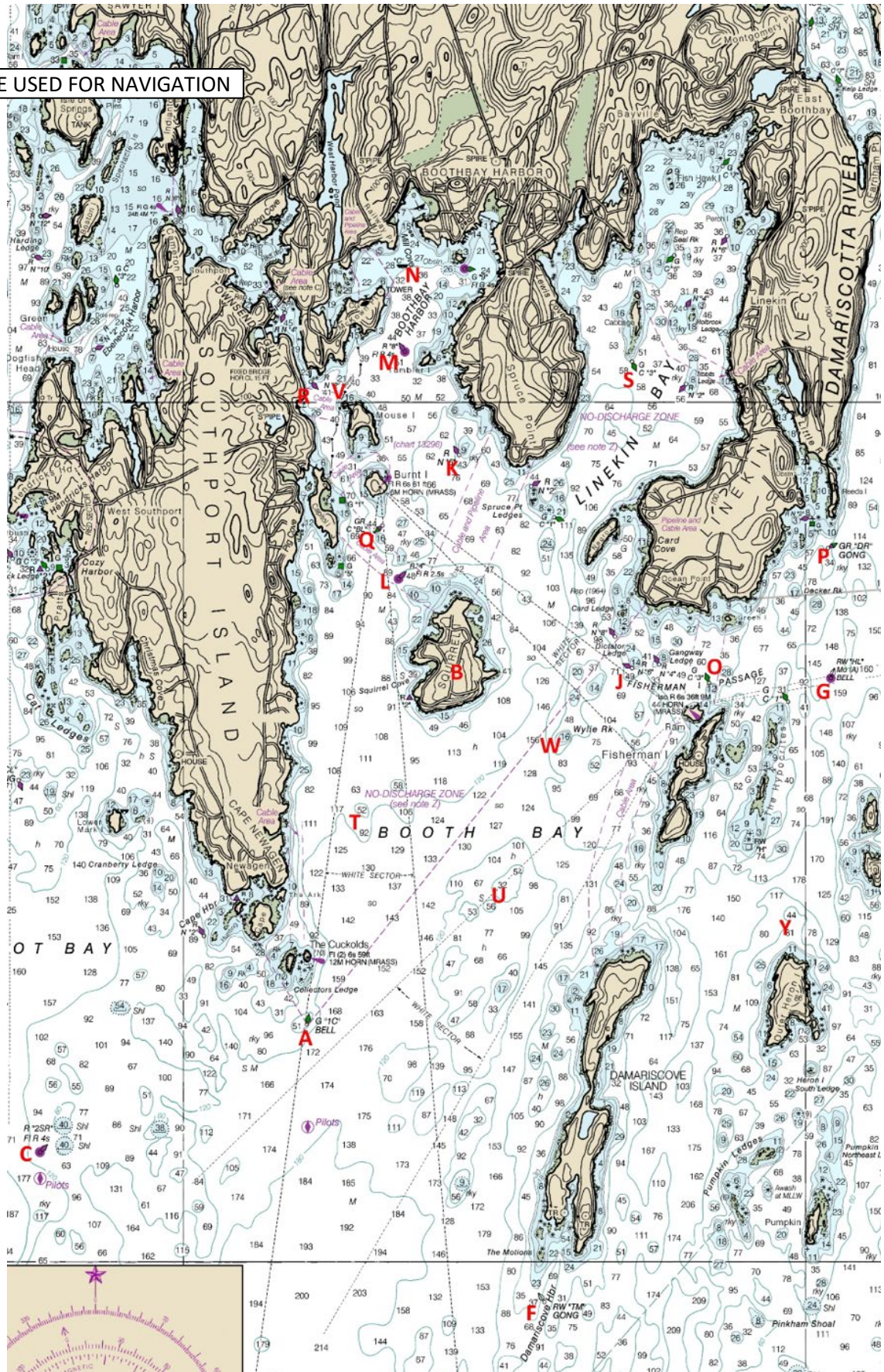
Note on use of spinnakers: BHYC encourages the use of spinnakers in these weekend races. For the BHOD class the start will be the same and time correction made after the race. PHRF basis for BHOD remains cruising 261, racing 252.

The following chart with annotations of racing marks is available for nominal cost at the BHYC club house. NOTE: New charts were printed in 2022. For the most recent information please use a current race chart. Racing charts are intended to provide an approximate location of marks of the course. They are not to be used for navigation.



2022 BHYC Commodore's Cup Sailing Instructions

NOT TO BE USED FOR NAVIGATION



24 June 2022

pg. 5