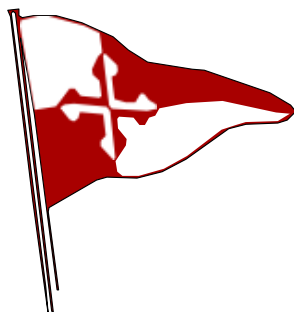
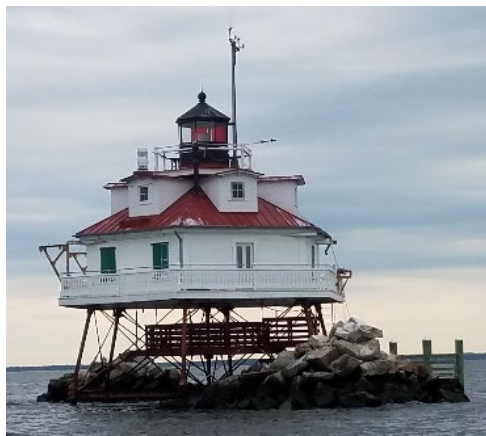


# In Support of Spirit Foundation

## SCC EWE Spirit Cup Notice of Race SATURDAY, May 21, 2022



Organizing Authority: Sailing Club of the Chesapeake  
CBYRA Sanction # 311  
[scc1944.clubexpress.com](http://scc1944.clubexpress.com)

### 1 Rules

The regatta will be governed by the rules as defined in the current Racing Rules of Sailing. The US Sailing SER "Nearshore Safety Equipment Requirements" apply and confirm or supplement the USCG requirements and the Racing Rules of Sailing except as amended by specific class association rules.

### 2 Entries

The regatta is open to any wind powered vessel. A CRCA class eligibility certificate is required for CRCA racers. Assigned ratings may be implemented if a boat does not have a current rating, or may be placed in a Portsmouth Yardstick Class with a Portsmouth Number at the discretion of the organizing authority. Assigned handicaps will be posted on the notice board by 1200 Thursday 19 MAY 2022.

One design scoring is offered to any class with 4 or more entries by 1700 16 MAY 2022. CHESSS, CRCA and any one design classes so requesting shall be in the cruising division. Harbor 20, J/22, J/24, and



[www.sandraklibby.com](http://www.sandraklibby.com)

*Thank you to our sponsors!*

Alerion 28 classes will be in the River Division. PHRF, ORR, Portsmouth, and remaining OD classes shall be in the racing division. Spinnaker and Non-Spinnaker classes will be offered.

J/105 Class Rules are modified by Article IX of the local J-105 Fleet-3 Article/Rules. This event is designated Level 1A. J-105 Fleet-3 Articles/Rules can be found at <https://www.j105fleet3.org/rules>

You may sail with as many or few crew as you feel comfortable.

Entry Due: 1700 Wednesday 18 MAY 2022

Entry Fee: \$25 (\$20 with \$5 CBYRA member discount)

Late Fee: \$20 additional for all entries after 11 MAY 2022

All proceeds will benefit the EWE Spirit Foundation <https://www.ewespirit.org/> The EWE Spirit Foundation's mission is to honor the legacy of Geoff Ewenson by helping those facing immediate hardship bridge financial and social support gaps through mentorship, outreach, and direct financial assistance, thus creating a kind world where everyone has the resources, assistance, and opportunity to live with dignity, hope, and joy.

Please consider fundraising as an individual or a team! <https://secure.ggiv.com/event/esca/>

Sailing Instructions: to be posted by May 1

### 3 Communications

Notices to competitors will be posted on the official event website

The race committee intends to make all announcements to competitors via VHF radio. The specific channel will be stated in the sailing instructions.

All boats shall carry a VHF radio capable of communicating on channels 9, 13, 16, 65, 68, 69, 71, & 72

### 4 Signals made ashore

Any signals made ashore will be virtual and posted on the official event website:



*Thank you to our sponsors!*

# Cruising Division

## 5 Cruising division online Entry:

[https://www.regattaman.com/def\\_event\\_page.php?race\\_id=910&yr=2022](https://www.regattaman.com/def_event_page.php?race_id=910&yr=2022)

## 6 Schedule

Start when you want, and where you want! It just needs to be between 1100 and 1500 on Saturday May 21, and at your choice of course marks.

## 7 Class flags

Class flags may be flown if desired.

## 8 Racing area

The racing area will be the Severn River and the Chesapeake Bay between Sandy Point and Thomas Point.

## 9 Course and marks

The course will consist of a triangle with 3 vertices:

- GC "1" off Hackett's Point
- GR C "SR" approximately 700 yards SSE of Thomas Point Lighthouse
- GC "7" approximately 500 yards NE by E of the Horn Point "shoal pole"

The attached diagram shows the course marks. The course may be sailed in either direction. All marks shall be rounded to port.

Alternate mark for lighter winds forecast:

- FL R 2.5s R"2" at the mouth of the Severn River

The following marks shall always be passed on the channel side

- "1AH" at Tolly Point
- FL R 6S 15ft 4M "4" off Greenbury Point

The specific course will be posted online no later than 1200 Friday 20 MAY 2022.

## 10 "Pick your own" starting and finishing lines

You can save a lot of transit time if your home port is on the Magothy, South, West, or other rivers!



*Thank you to our sponsors!*

Take your own start and finish times and log them online. **You may start at your choice of vertex**; you must finish at the same point. The start/finish line shall lie between the GC "1" and a point 100 yards due east, GR C "SR" and its adjacent lighthouse, or GC "7" and an orange flag on the RC boat.

## 11 Time limit

No time limit for cruising division.

## 12 Protests

This is supposed to be fun. Please sail with a sense of sportsmanship! If you break a rule or foul another boat, please take your penalties on the water. Otherwise, if you must, file electronically using <https://cdn.ussailing.org/wp-content/uploads/2018/01/US-Sailing-2017-2020-Protest-Form.pdf>

## 13 Scoring

Only one race will be held. Scores will be calculated based on the self-reported start and finish times entered online by each skipper.

## 14 Awards

BEER! For all sailors of legal drinking age, to be collected after finishing from a separate RC boat approximately 50 yards NW of the finish line. Cruising division boats may collect their beer while rounding GC "7", but may not file redress for any delays associated with said provisioning. Enjoy it responsibly! We are working on a social gathering immediately after racing to announce winners and present awards for top fundraisers. No further prizes will be awarded, but swag can be ordered from <https://www.ewespirit.org/ewe-stuff>

## 15 The lawyers made me

See RRS 4, Decision to Race. The organizing authority will not accept any liability. Competitors participate in the regatta entirely at their own risk.

# Racing Division

## 5 Racing division online Entry

[https://www.regattaman.com/def\\_event\\_page.php?race\\_id=679&yr=2022](https://www.regattaman.com/def_event_page.php?race_id=679&yr=2022)

## 6 Schedule

The Warning signal will be made at 1200 Saturday 21 MAY 2022 at GC "7" off Horn Point. Racing division will be a pursuit style start. The starting sequence will be posted 24 hours prior to the start.



*Thank you to our sponsors!*

## 7 Class flags

Class flags shall be flown in accordance with CBYRA Green Book.

## 8 Racing area

The racing area will be the Severn River and Chesapeake Bay between Sandy Point and Hackett's Point.

## 9 Course and marks

The course will consist of a triangle with 3 vertices:

- GC "1" off Hackett's Point
- GR C "SR" approximately 700 yards SSE of Thomas Point Lighthouse
- GC "7" approximately 500 yards NE by E of the Horn Point "shoal pole"

Alternate mark for smaller boats and/or lighter winds forecast:

- FL R 2.5s R"2" at the mouth of the Severn River

The attached diagram shows the course marks. The course may be sailed in either direction. All marks shall be rounded to port. The course length and specific marks to be used will be posted 24 hours prior to the start.

The following marks shall always be passed on the channel side **for all keelboat classes.**

- "1AH" at Tolly Point
- FL R 6S 15ft 4M "4" off Greenbury Point

## 10 Starting and finishing lines

The start/finish line shall lie between GC"7" and an orange flag on the RC boat.

## 11 Time limit

Any yacht not finishing by 1630 Sunday 16 MAY 2021 will be scored TLE.

## 12 Protests

This is supposed to be fun. Please sail with a sense of sportsmanship! If you break a rule or foul another boat, please take your penalties on the water. Otherwise, if you must, file electronically using <https://cdn.ussailing.org/wp-content/uploads/2018/01/US-Sailing-2017-2020-Protest-Form.pdf>

## 13 Scoring

Only one race will be held. Boats will be scored by class in the order of their finish.



*Thank you to our sponsors!*

## 14 AWARDS

BEER! For all sailors of legal drinking age, to be collected after finishing from a separate RC boat approximately 50 yards NW of the finish line. Enjoy it responsibly! We are working on a social gathering immediately after racing to announce winners and present awards for top fundraisers. No further prizes will be awarded, but swag can be ordered from <https://www.ewespirit.org/ewe-stuff>

## 15 The lawyers made me

See RRS 4, Decision to Race. The organizing authority will not accept any liability. Competitors participate in the regatta entirely at their own risk.

# River Division

## 5 River division online Entry

[https://www.regattaman.com/def\\_event\\_page.php?race\\_id=988&yr=2022](https://www.regattaman.com/def_event_page.php?race_id=988&yr=2022)

## 6 Schedule

The Warning signal will be made at 1200 Saturday 21 MAY 2022 at GC"7" off Horn Point. River division will utilize the Appendix U (3 minute dinghy style) start. Please remain in the vicinity of the start / finish line after the first race. Your second start will be shortly after the last Racing division pursuit start.

## 7 Class flags

Class flags may be flown in accordance with CBYRA Green Book.

## 8 Racing area

The racing area will be the Severn River.

## 9 Course and marks

The course will be around drop and/or government marks. The course length and specific marks to be used will be announced prior to the start. The intent is to set a nominally windward / leeward course of approximately 45 minutes.

The following marks shall always be passed on the channel side **for all keelboat classes**.

- "1AH" at Tolly Point
- FL R 6S 15ft 4M "4" off Greenbury Point
- FL 6s 15ft 4M "HP", aka the Shoal Pole

## 10 Starting and finishing lines

The start/finish line shall lie between GC"7" and an orange flag on the RC boat.



[www.sandraklibby.com](http://www.sandraklibby.com)

*Thank you to our sponsors!*

## 11 Time limit

Any yacht not finishing by 1630 Sunday 16 MAY 2021 will be scored TLE.

## 12 Protests

This is supposed to be fun. Please sail with a sense of sportsmanship! If you break a rule or foul another boat, please take your penalties on the water. Otherwise, if you must, file electronically using <https://cdn.ussailing.org/wp-content/uploads/2018/01/US-Sailing-2017-2020-Protest-Form.pdf>

## 13 Scoring

Two races are planned. One race shall constitute a regatta. Boats will be scored by class in the order of their finish.

## 14 AWARDS

BEER! For all sailors of legal drinking age, to be collected after finishing from a separate RC boat approximately 50 yards NW of the finish line. Enjoy it responsibly! We are working on a social gathering immediately after racing to announce winners and present awards for top fundraisers. No further prizes will be awarded, but swag can be ordered from <https://www.ewespirit.org/ewe-stuff>

## 15 The lawyers made me

See RRS 4, Decision to Race. The organizing authority will not accept any liability. Competitors participate in the regatta entirely at their own risk.

## Contact

Drew Mutch (SCC RC Chair): 410-982-4877

Email: [scc1944.rc@gmail.com](mailto:scc1944.rc@gmail.com)



*Thank you to our sponsors!*



THE OFFICIAL TRANSPORTATION PROVIDER  
FOR THE WASHINGTON NATIONALS



[www.sandraklibby.com](http://www.sandraklibby.com)



*INNOVATION ROOTED IN TRADITION*

**In Support of  Spirit Foundation**



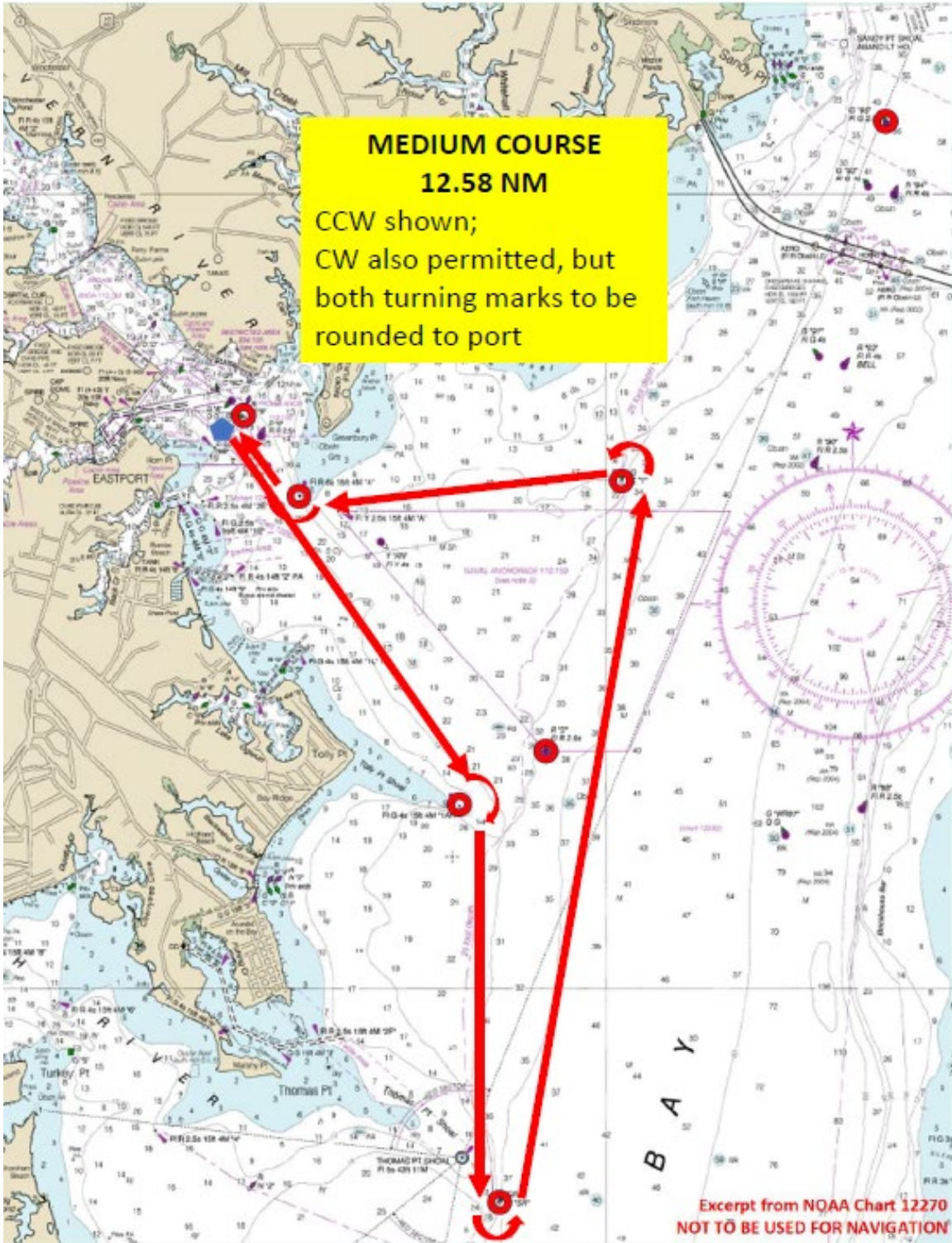
*INNOVATION ROOTED IN TRADITION*

[www.sandraklibby.com](http://www.sandraklibby.com)

*Thank you to our sponsors!*



Appendix A – course diagram



INNOVATION ROOTED IN TRADITION

[www.sandraklibby.com](http://www.sandraklibby.com)

*Thank you to our sponsors!*