

ONE DAY PURSUIT RACE
SAILING INSTRUCTIONS
AUG 5, 2023

1. RULES

- 1.1. The Cottage Park Yacht Club Regatta to benefit Make-A-Wish will be governed by the *rules* as defined by MBSA and in the *Racing Rules of Sailing, 2021 – 2024*.
- 1.2. By participating in this regatta, a competitor grants to the Organizing Authority and its sponsors the right in perpetuity to make, use and show, from time to time at their discretion, any photographs, motion pictures and live, taped or filmed television and other reproductions of him or her during the period of the competition without compensation.
- 1.3. Boats are required to check-in before their first start of the day with boat name, number and number of souls on board. Boats in the racing area that are not starting a second or subsequent race must notify the Race Committee before leaving the racing area. Boats that withdraw from racing must advise the Race Committee as soon as reasonably possible.

- 2. ADVERTISING** – Shall be restricted to Category A in accordance with ISAF Regulation 20, Advertising Code, and the relevant class rules.

3. DIVISIONS

- 3.1. Two divisions are planned, Spinnaker, and JAM. This may change depending on the number of entries
- 3.2. ORR-EZ ratings will apply. Boats without an official rating certificate will be assigned a rating.

4. SCHEDULE OF EVENTS

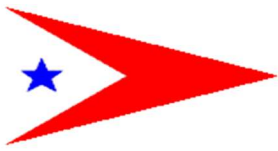
| | | |
|----------------------------------|------------|---|
| FRIDAY AUG 4TH | 7:00 PM | START TIMES ASSIGNED VIA REGATTAMAN.COM |
| SATURDAY AUG 5 | 12:00 noon | Pursuit Race Start |
| | 6:00 PM | Dinner |

- 5. NOTICE TO COMPETITORS** – Notice to Competitors will be posted on the Official Notice Board located in the ballroom of CPYC. They will also be posted at www.regattaman.com

- 6. CHANGES TO THIS SI** – Will be posted before 9AM on the day it will take effect on www.regattaman.com

- 7. RADIO:** The Chase Race Committee will use VHF Channel 72 for communicating with the fleet.

- 8. VENUE:** All vessels should meet in the vicinity of Yellow Nun “E”, 1.15 miles west of Deer Island Light by 11:30 AM. The Race Committee will lead the fleet to the proper starting line if necessary and will try to start as close to 12 noon as possible.



9.0 STARTING PROCEDURE

9.1 Starting sequence

| | | |
|-------|------------|--|
| 11:55 | WARNING | Code Flag A goes up, Horn |
| 11:56 | PREP | Code Flag P goes up, Radio Time Announcement |
| 11:57 | | Radio Time Announcement |
| 11:58 | | Radio Time Announcement |
| 11:59 | ONE MINUTE | Code Flag P goes down, Radio Time Announcement |
| 12:00 | START | Red Start Flag goes up, Horn, Announcement |

9.2. Start time

Your assigned start time is the amount of time **AFTER the START**. (Red Flag and Horn) The Race Committee will make an effort to announce each minute after the start. This notice is informational. Skippers are responsible for keeping track of their own starting times.

Start times are available on www.regattaman.com

9.3. The race committee will use GPS time for all signals. In the event of a Postponement for any reason, the committee will attempt to use GPS time with an exact minute delay of the start. Example: the committee will announce the new starting time is 12:45:00 PM.

9.4. You have been assigned two starting times, one for the Short Course, 8.1 miles and one for the Long Course, 13.4 miles. The committee will post the course no less than 5 minutes before the warning signal and will announce it via VHF.

9.5. All boats **MUST KEEP CLEAR** of the course side of the starting line from the warning signal until one minute before their starting time.

9.5 Start times will **not** be given out from the committee boat.

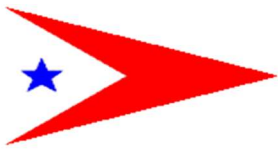
10. COURSES: One of the following courses, determined by wind speed, direction, and number of competitors, will be used. It is expected that the Spinnaker competitors will use the Long Course; and JAM competitors, the Short Course. There are two versions of both the Short and Long Courses. They may be reversed depending on the wind direction. The course will be posted on the Committee Boat and/or announced on VHF radio. The direction for turning each mark is indicated below.

Long Course #1

START (Vicinity of Yellow Nun "E")
 MK 1 RG PR Pres Rds Junction (Port)
 MK 2 G C "9" S. Channel (Port)
 MK 3 R "2" Ent. Hypocrite Ch (Port)
 MK 4 R "2" Bell 3 1/2 nm Fathom Ledge (Starb)
 MK 5 R "4" 4/10 N Pt Allerton (Starboard)
 MK 6 R "6"SE Lovells Island (Starboard)
 MK 7 G "15" NE Nixes Mate (Port)
 FINISH (Vicinity of Yellow Nun "E")

Short Course #1

START (Vicinity of Yellow Nun "E")
 MK 1 GC"5" Nubble Ch (Starboard)
 Mk 2 GC "1" Nubble Ch (Starboard)
 Mk 3 R "4" Off Bass Point (Starboard)
 MK 4 G C "5" Off West Head (Starboard)
 MK 5 R "2" 4/10 nm W Spectacle Isl. (Starboard)
 MK 6 G "3" 2/10 nm NW Spectacle (Starboard)
 MK 7 G "17" 1/10 nm LI Head (Port)



Long Course #2

START (Vicinity of Yellow Nun "E")
MK 1 G "15" NE Nixes Mate (Starboard)
MK 2 R "6"SE Lovells Island (Port)
MK 3 R "4" 4/10 N Pt Allerton (Port)
MK 4 R "2" Bell 3 1/2 nm Fathom Ledge (Port))
MK 5 R "2" Ent. Hypocrite Ch (Starboard)
MK 6 G C "9" S. Channel (Starboard)
MK 7 RG PR Pres Rds Junction (Starboard)
FINISH (Vicinity of Yellow Nun "E")

Short Course #2

START (Vicinity of Yellow Nun "E")
MK 1 G "17" 1/10 nm LI Head (Starboard)
MK 2 G "3" 2/10 nm NW Spectacle (Port)
MK 3 R "2" 4/10 nm W Spectacle Isl.(Port)
MK 4 G C "5" Off West Head (Port)
MK 5 R "4" Off Bass Point (Port)
MK 6 GC "1" Nubble Ch (Port)
MK 7 GC "5" Nubble Ch (Port)
FINISH (Vicinity of Yellow Nun "E")

Following course map is illustrative and should not be used for navigation. All land obstructions and navigational marks shall be observed as listed in the MBSA Sailing Instructions plus between FL R 4 and in the Black Rock Channel. i.e. Deer Island Light, Faun Bar, etc.

11. TIME LIMIT: If retiring from the race, please notify the Race Committee on Channel 72. The time limit for the race is 4:00 PM.

12. PROTESTS: Due to the nature of the race, protests are discouraged, and skippers urged to accept the alternative penalty (720) when appropriate. If a protest is necessary, it should be submitted in writing and hearings will be held at Cottage Park Yacht Club following the race according to RRS 61.

11. SAFETY: Competitors participate in the regatta entirely at their own risk. See RRS4, Decision to Race. The organizing authority will not accept any liability for material damage or personal injury, or death sustained in conjunction with or prior to, during, or after the regatta.

12. PRIZES – Make-A-Wish trophies will be awarded to competitors placing first through third.

13. FURTHER INFORMATION

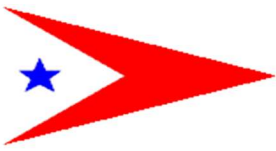
Contact Sue Hardy, CPYC, 76 Orlando Ave, Winthrop, MA 02152, Windjammer@cpyc.org and check www.regattaman.com for directions and further information.

14. HOST CLUB

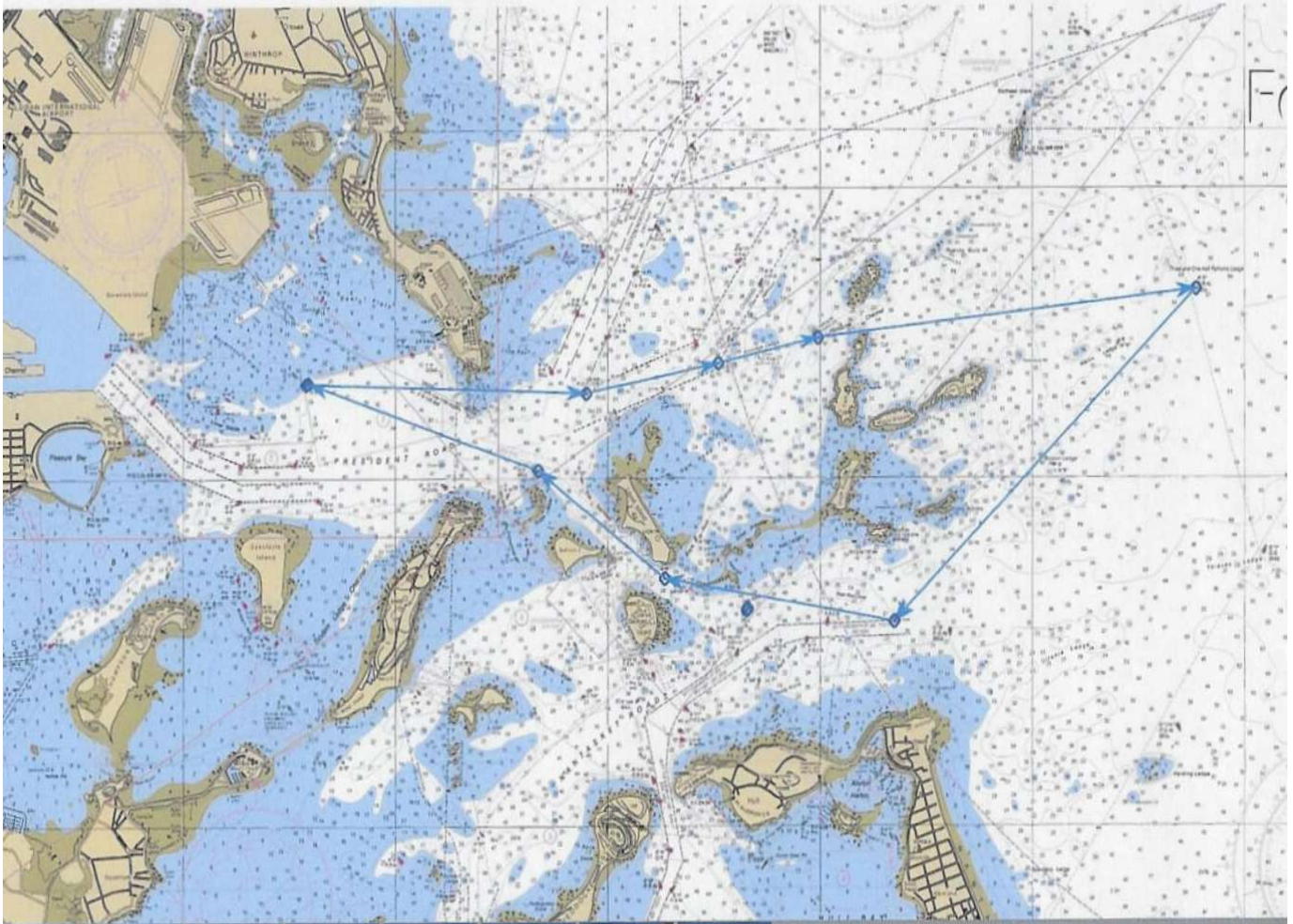
Cottage Park Yacht Club
76 Orlando Ave
Winthrop, MA 02152
617-846-2792/617-846-9801
617-846-9362 (Fax)
cpycmanager@cpyc.org

15. REGATTA CHAIRMAN

Sue Hardy
47 Bartlett Parkway
Winthrop, MA 02152
617-846-6320
Sueshardy@comcast.net



LONG COURSE





SHORT COURSE

