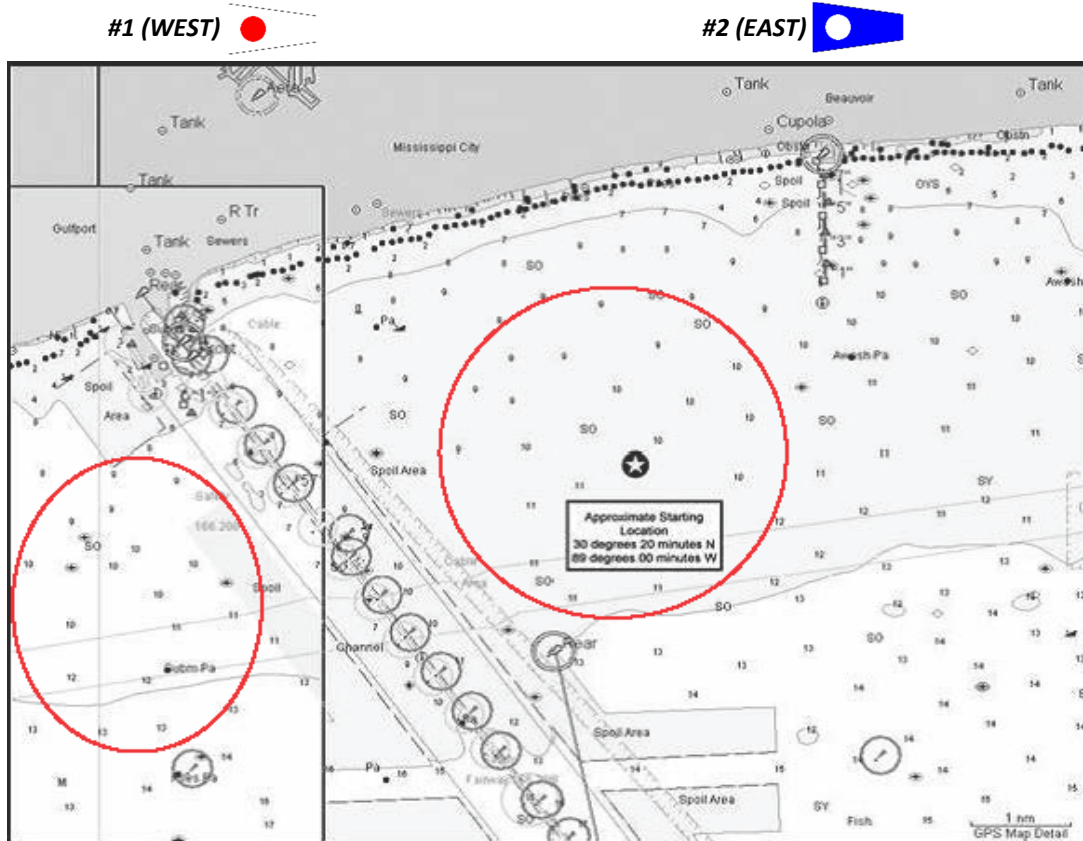


# 2023 Gulf Yachting Association Challenge Cup - Sailing Instructions

The Notice or Race has all other information for the regatta.

## EXHIBIT A:



## EXHIBIT B:



# EXHIBIT C:

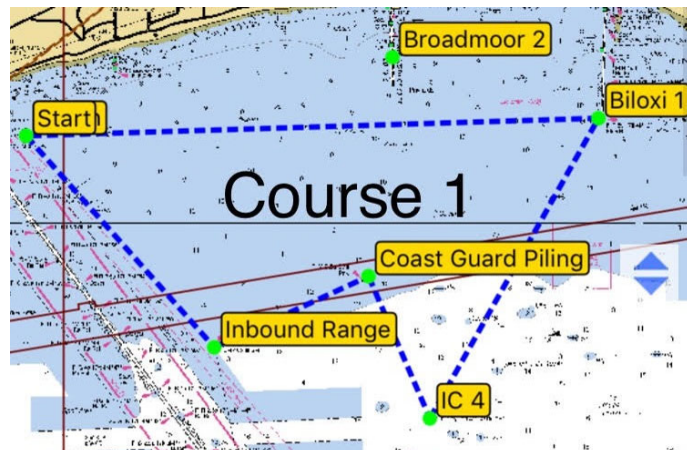
## GYA Challenge Cup

### Distance Race Courses

**NOTE: IN THE EVENT THAT ANY MARK BELOW IS MISSING AN ORANGE TETRAHEDRON WILL BE PLACED IN THE GPS LOCATION OF THE MISSING MARK.**

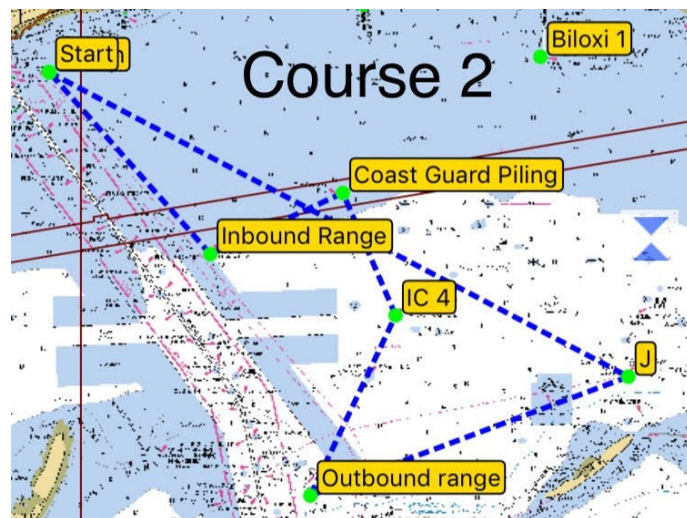
#### Course 1 - 23.08NM

Leg	Heading	Distance	Rounding
Start to Inbound Range	140°	4.29NM	Port
Inbound to USCG Piling	67°	2.57NM	Starboard
Piling to ICW 4	158°	2.35NM	Port
ICW 4 to Biloxi 1	31°	5.22NM	Port
Biloxi to Finish	270°	8.65NM	



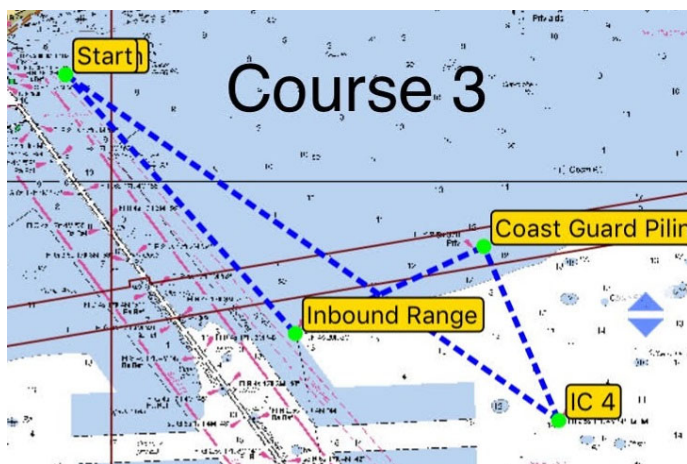
#### Course 2 - 30.23NM

Start to J	119°	11.52NM	Starboard
J to Outbound Range	251°	5.98NM	Starboard
Outbound to ICW 4	27°	3.52NM	Port
ICW 4 to USCG Piling	338°	2.35NM	Port
Piling to Inbound Range	247°	2.57NM	Starboard
Inbound to Finish	320°	4.29NM	



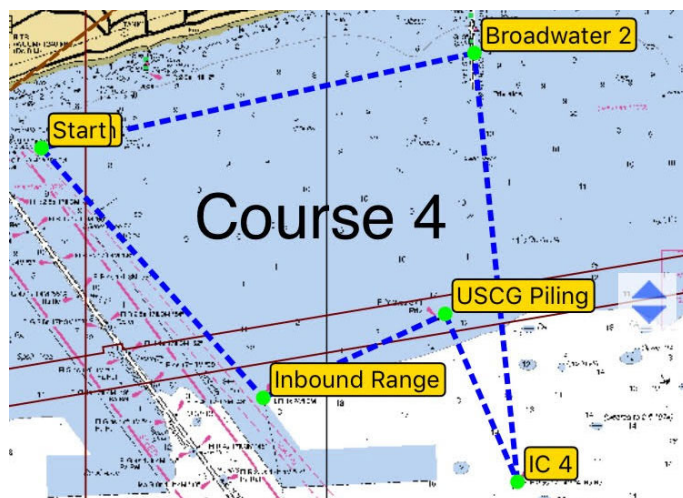
#### Course 3 - 16.67NM

Start to ICW 4	127°	7.46NM	Port
ICW to USCG Piling	338°	2.35NM	Port
Piling to Inbound Range	247°	2.57NM	Starboard
Inbound to Finish	320°	4.29NM	



#### Course 4 - 20.43NM

Start to Inbound Range	140°	4.29NM	Port
Inbound to USCG Piling	67°	2.57NM	Starboard
Piling to ICW 4	158°	2.35NM	Port
ICW 4 to Broadwater 2	356°	5.54NM	Port
Broad 2 to Finish	259°	5.68NM	



#### Waypoints:

Start/Finish	089°04.226'W	30°21.321'N
Biloxi 1	088°54.211'W	30°21.589'N
Broadwater 2	088°57.815'W	30°22.517'N
ICW 4	088°57.161'W	30°17.027'N
Inbound Range	089°00.935'W	30°18.108'N
J	088°52.420'W	30°15.944'N
Outbound Range	088°58.897'W	30°13.844'N
USCG Piling	088°58.234'W	30°19.188'N