

2023 RYC Solstice Race Sailing Instructions
Rockland Yacht Club
July 22, 2023

1. **Rules:** Racing will be governed by the *Racing Rules of Sailing for 2021-2024*
2. **Entries:** All comers welcomed! If you have a PHRF certificate please submit it with your registration. Boats not having a current PHRF Rating certificate will be rated using their class' base rating.
3. **Notices to Competitors:** Notices to competitors in case of cancellation: The Race Committee will attempt to contact competitors by email if race cancellation or other changes are made.
4. **Changes to Sailing Instructions** – Any changes to the sailing instructions will be distributed to all registered skippers by email on or before the day of the race.
5. **Signals Made Ashore:** At this time Rockland Yacht Club has no plans to display signals ashore.
6. **Schedule of Races:** One race is scheduled for Saturday **July 22**, 2023, with the first warning gun at 1130. There will be a skippers meeting at 1000 at the RYC Clubhouse.
7. **Class Flags will be:**

One Design	Class Flag
Non-Spinnaker	“W” flag (red, white & blue)
PHRF-Division 1&2	Red flag
8. **Racing Area:** Racing for both divisions will be held in West Penobscot Bay (chart 13302)
9. **Check in Before Start:** Boats shall check in before the start. This is done by sailing past the stern of the Race Committee after it has set the pin end and has anchored on the line or by contacting the RC on **VHF channel 68**. Boats that withdraw from a race or decide not to start after coming to the racing area, shall advise the Race Committee as soon as reasonably possible.
10. **Marks:** See attached chart. The Race Committee will announce the course on the day of the race, at the Skippers' Meeting. Captains are encouraged to print out these Sailing Instructions, including the chart showing possible race marks and have them aboard their boats.
11. **Start:** Race will be started by using *RRS 26*.
 - 11.1 **The starting line:** The starting line will be between a staff displaying an orange flag on the RC vessel and the course side of the orange starting mark.

11.2 The order of starts will be:

1. One Design
2. Non-Spinnaker
3. Division 1&2

Prior to initiation of the Starting Sequence at the beginning of the racing the Race Committee will hail all yachts on Channel 68 and inform them that racing will begin within 2 minutes.

A courtesy signal may be provided by the RC one minute before the Class signal.

The flags indicate the timing of the sequence – not the horn.

11.3 Race shall be started using the following signals:

	Minutes before start	Visual signal	Sound signal
Warning	5	Class flag	One
Preparatory	4	"I" flag	One
One minute	1	"I" flag removed	One
Starting signal	0	Class flag removed	One

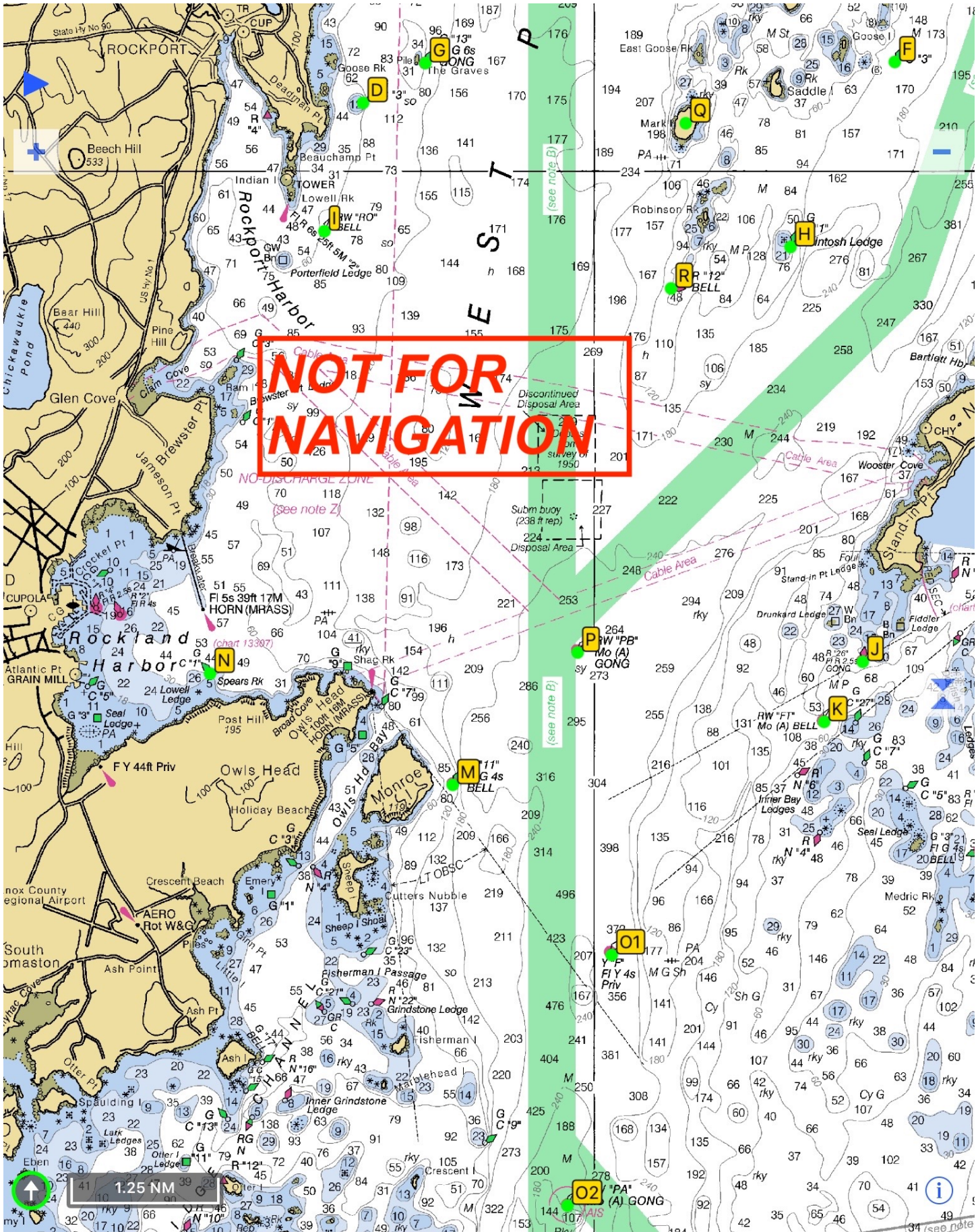
The warning signal for each succeeding class shall be made approximately one minute after the starting signal of the preceding class.

11.4 Over Early: The "I" flag rule (*RRS 30.1*) is in effect at all times. The "I" flag (Round-an-End Rule) states that if a boat is on the course side of the line during the minute before the start "she shall thereafter sail from the course side across an extension to the pre-start side before starting." You must round either the Committee Boat or the pin end and re-enter the starting line (no dipping). Also remember that while you are heading for an end to round, that you will have no rights, (not even starboard!).

- 12. Individual Recalls:** The Race Committee will give one horn blast, "X" flag up, and hail the individual boats. The RC will attempt to hail over early boats on Channel 68 or verbally if within earshot. Boats will be hailed by yacht name. The RC is not required to hail boats, this is courtesy of the RC. The failure to hail, the hail of some but not all boats, or untimely hail of a boat or boats shall not be grounds for granting redress.
- 13. General Recalls:** When at the starting signal the RC is unable to identify boats that are OCS or if there has been an error in the starting procedure, the RC may signal a general recall by hoisting "First Substitute" flag with two horn blasts. The recall will be announced on Channel 68. Signal will be removed with one horn blast and the warning signal will be made one (1) minute after removal of First Substitute.
- 14. Shorten Course:** The Race Committee may shorten the course for any reason. The Race Committee will hail the fleet(s) over channel 68 informing them of the changes.

15. **The Finish:** The finish line will be between the RC boat and a dropped mark in the vicinity of Can #1 (Mark N) unless specifically communicated otherwise at the skippers meeting. If for some reason the RC boat is not on station, skippers shall take their time as they cross between the Rockland Breakwater Light and Can "1" (Mark N) and phone or text the time of their finish to the RC. Contact Randy Pickelmann at 727-423-0947.
16. **Time Limit:** There is a 5-hour time limit for this race.
17. **Penalty System:** The RC has determined that given the particular conditions of the RYC races, normal Two Turns penalties as described in RRS 44.1 and 44.2, shall be taken as a One Turn penalty. After getting well clear of other boats as soon after the incident as possible, a boat shall take a One Turn Penalty to exonerate herself. When a boat hits a mark the penalty is one turn.
18. **Protests:** Protests and Requests for Redress: follow RRS 60 – RRS 62.2. A protesting yacht must hail 'protest' and conspicuously display a red flag at the first reasonable opportunity (RRS 61.1a). Also boats intending to protest will, after finishing, notify the Race Committee at the finishing line. The notification shall include the sail number or yacht name (PHRF) of the protested boat. After receiving this notification the Race Committee will announce over Channel 68 that a protest is pending and that a meeting will occur. The protesting yacht must fill out a protest form and deliver it to the Protest Committee (not Race Committee) in the Club House no later than one hour after the last finish of that day. Protest Forms are available online at <http://www.ussailing.org/racemgt/documents/ussapf.pdf>, please print copies and have them on your boat. The Protest hearing will begin 15 minutes after the form is submitted provided all parties are in attendance.
19. **Scoring:** The low point scoring system (RSS A4) shall be used with the first place being awarded one point. Boats scored OCS, DNF, and DSQ will be awarded a finish score 1 greater than the number of boats that came to the starting area (RRS 5.3). A race will only be scored for a Division in which 2 or more boats start. Scoring is done using the time-on-time method.
20. **Safety Requirements and Equipment:** Each competing boat is required to carry at least the following equipment; Prescribed Coast Guard safety equipment, a working VHF Radio, visual signals for daytime use, and a suitable anchor and line for the class and sailing area. Radio Communications & Emergency Conditions: Emergency conditions should be reported to the Race Committee on channel 68. The Race Committee will monitor channel 68 from the time they leave the dock until they return to the dock at the end of the day. Boats in need of assistance can also call the Rockland Coast Guard on channel 16. The Committee Boat carries an emergency first aid kit and a cell phone with emergency phone numbers.
21. **Disclaimer of Liability:** Competitors participate in the Racing Program entirely at their own risk (RRS 4, decision to race). The organizing authority will not accept any liability for material damage or personal injury or death sustained in conjunction with or prior to, during, or after the Racing Program.

Launch Service – Launch Service for non-members may be available at additional cost. Due to the Covid-19 virus situation, launch operations may be adjusted as required.



MARK	IDENTITY	LOCATION	LAT	LON
		REVISED MARCH 2020	APPROX	IMATE
D	C "3" Can	East of Deadman Point	44-10.59	69-02.74
F	G C "3" Can	East of Goose Island	44-10.94	68-56.42
G	G "13" Gong	The Graves Bouy AND the Rock Pile	44-10.93	69-02.00
H	G C "1" Can	Macintosh Ledge	44-09.35	68-57.66
I	RW "RO" Bell	South East of Indian Island	44-09.49	69.03.20
J	R "26" Gong	South West of Fiddler Ledge	44-05.80	68-56.80
K	RW "FT" Bell	Entrance to Fox Island Thorofare	44.05.28	68-57.26
M	G "11" Bell	East of Monroe Island	44-04.74	69-01.67
N	G C "1" Can	Spears Rock	44-05.70	69-04.56
O1	Y "F" Prvt Yellw	East of Sheep Island	44-03.28	68-59.78
O2	RW "PA" Gong	North East of Andrews Island	44-01.13	69-00.31
P	RW "PB" Gong	Penobscot Bay Bouy	44-05.88	69.00.19
Q	Mark Island	Use Mark Island as the Mark	44-10.41	68-58.90
R	R "12" Bell	South West of Robinson Rock	44-09.00	68-59.08
TL	Drop Mark	Temporary Leeward Mark	TBA	TBA
TW	Drop Mark	Temporary Windward Mark	TBA	TBA

0000001