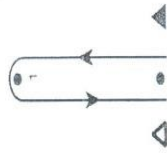




SPIRIT SERIES CHAMPIONSHIP
August 5 & 6, 2023

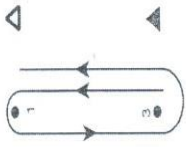
1. **Rules:** The regatta will be governed by the *2021-2024 RRS*. The Two Turns (720) penalty will be in effect for Section 2 rules infractions. The organizing authority is Thunderbird Fleet 5.
2. **Entries:** Regatta is open to all ITCA members in good standing.
3. **Notices to Competitors:** The Race Committee Boat will monitor VHF Channel 72 from one hour before the first Warning Signal until all yachts have finished the race. Communications will not be acknowledged during the starting sequence unless marine safety is involved.
4. **Schedule of Races:** Three races scheduled for Saturday and two races scheduled for Sunday. Subject to change at the discretion of the Race Committee.
5. **Racing Area:** Quincy Bay
6. **Marks:** Yellow inflatables.
7. **The Start:** The first Warning Signal will be made at 1100. Starting sequence will be standard 5-minute sequence.
8. **Recalls:** The Race Committee will attempt to hail premature starters on VHF Channel 72. The failure to hail premature starters, the hail of some but not all premature starters, or the untimely hail of premature starters shall not be grounds for redress [changes RRS 62.1(a)].
9. **The Course:** Courses will be windward-leeward corresponding to diagram (below) as designated by the RC. All marks left to port.
10. **Time Limit:** Two & a-half hours after each start.
11. **Scoring:** Low point system per *2021-2024 RRS*. There will be no throw-outs.
12. **Prizes:** Winner will be awarded the Thunderbird Spirit Series Trophy at Fleet 5 Awards Dinner in winter 2024.
13. **Disclaimer of Liability:** Competitors participate in the regatta entirely at their own risk – See rule 4, Decision to Race. The Organizing Authority will not accept any liability for material damage or personal injury or death sustained in conjunction with or prior to during, or after the regatta.

Standard Courses



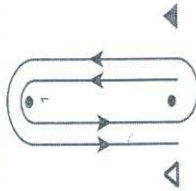
Course A

Start - Mark 1 - Finish



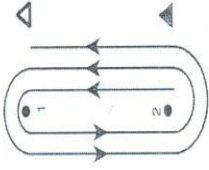
Course B

Start - Mark 1 - Leeward Mark - Finish



Course C

Start - Mark 1 - Leeward Mark - Mark 1 - Finish



Course D

Start - Mark 1 - Mark 2 - Mark 1 - Mark 2 - Finish