



CONSTITUTION YACHT CLUB

Sailing Instructions

2024 New Year's Day Race

There will be no Skippers' meeting. Registration is available through regattaman.com. The fee is \$25.00. Yachts not having a 2021 ORR-ez certificate will be given a handicap for the race by the CYC Fleet Handicapper or Fleet Captain.

The race will be a self start Pursuit Race. The start and finish line will be between the Pier 6 private daymark and Boston Main Channel Light 14 (orange daymark triangle pointed up) on the East Boston side. There will be a spotter on Pier 6 to announce the course and to determine finishing order. The course will be announced NLT 11:30 on Channel 69. The race will be governed by *The Racing Rules of Sailing 2021- 2024 edition*, except as noted in these Sailing Instructions. Yachts may race either as "racing" or "cruising" per their certificates. Yachts using spinnakers may only deploy them after crossing the starting line.

CYC recognizes that US Sailing has issued a prescription requiring the wearing of flotation devices at the start and finish of offshore races as well as at all other times unless directed otherwise by the vessel's captain. In view of the fact that this race will be conducted within Boston's Inner Harbor, the decision as to whether a yacht's crew wear flotation devices shall be left to the individual yacht's skipper. No protest of such a skipper's decision will be allowed.

PROTESTS

Skippers are urged to familiarize themselves with Part 5, Section A of the rules governing protests, including, but not limited to, hailing the offending yacht and flying a red protest flag. Failure to comply with these requirements will result in the disallowance of a filed protest.

Rule 44.1 requiring a two-turn degree penalty turn is changed to a one-turn penalty turn.

The RC must be notified as soon as possible after a foul is committed if it is not cleared by the offending yacht. A written protest must be filed with the RC at the post-race gathering immediately after the race. This must be on the CYC Protest form, available from a Race Committee member.

STARTING SEQUENCE

A list of start times will be emailed to each registered skipper the afternoon before the race. Start times will also be available at the skippers meeting. The slowest boat will be on or around 12:00pm.

RACING

We are rounding government buoys with the permission of the Port Captain, USCG. **Everyone must obey the United States Department of Transportation Inland Rules of the Road.** These rules apply to all vessels. There is no special consideration for yachts involved in racing.

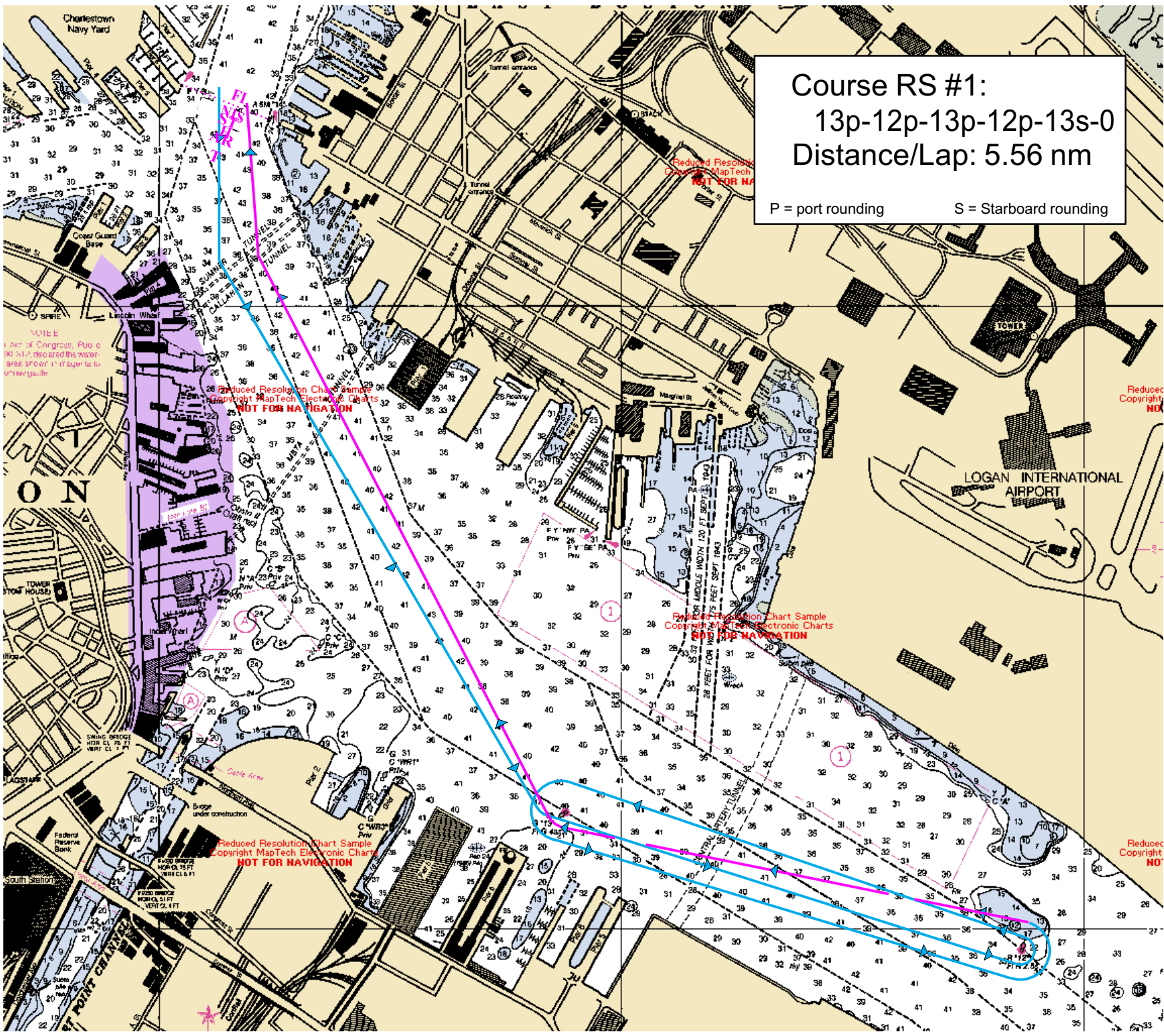
COURSES

The CYC NYD Race start line will be between the light at the end of pier 6 "FY 80ft Priv" and the daymark across the channel "QR 5M 14". Courses will be selected from the "Rogue" Courses attached to this document and also available on RMS.

TIME LIMIT

The time limit for all yachts will be two and one half hours. A yacht must notify the RC if it retires for any reason.

POST RACE GATHERING Immediately following the race, all skippers and crew are invited for a post race party at Blackmoor from 1500-1900. Chowder and Salad will be served (\$10 Fee for Non-Members), with a cash bar.



Course RS #1:
 13p-12p-13p-12p-13s-0
 Distance/Lap: 5.56 nm
 P = port rounding S = Starboard rounding

Reduced Resolution Chart Sample
 Copyright MapTech Electronic Charts
NOT FOR NAVIGATION

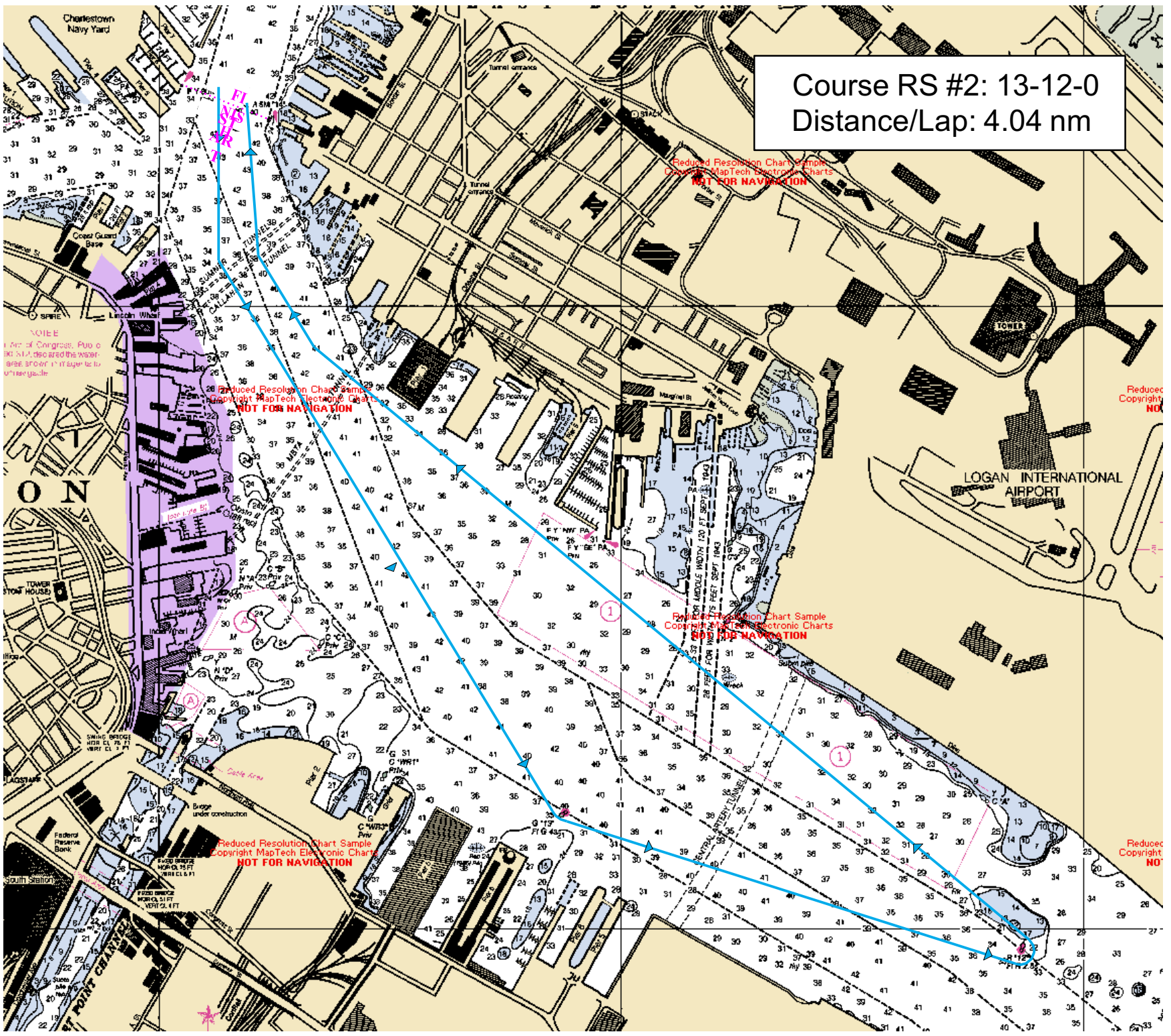
Reduced Resolution Chart Sample
 Copyright MapTech Electronic Charts
NOT FOR NAVIGATION

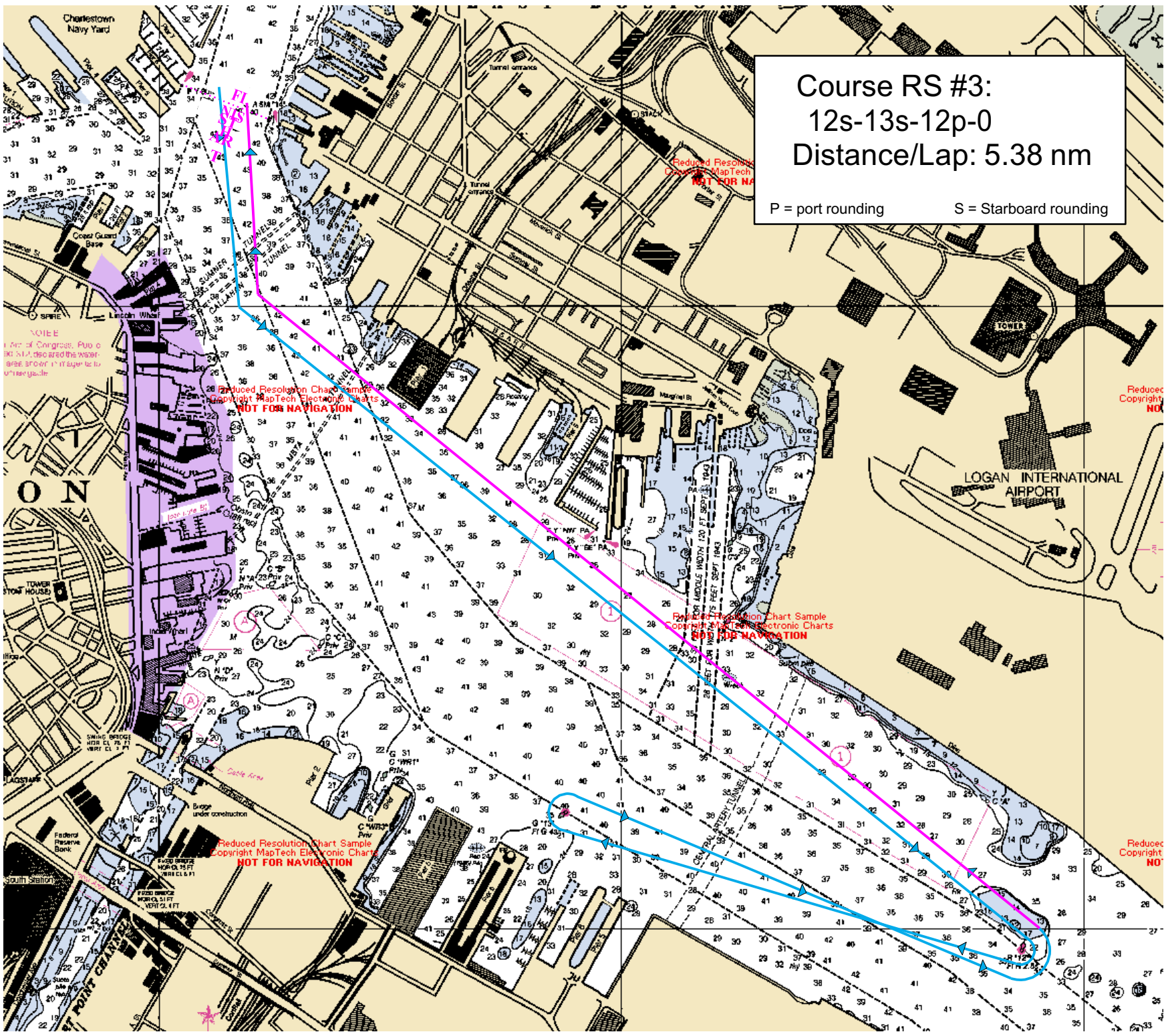
Reduced Resolution Chart Sample
 Copyright MapTech Electronic Charts
NOT FOR NAVIGATION

Reduced Resolution Chart Sample
 Copyright MapTech Electronic Charts
NOT FOR NAVIGATION

Reduced Resolution Chart Sample
 Copyright MapTech Electronic Charts
NOT FOR NAVIGATION

Course RS #2: 13-12-0
Distance/Lap: 4.04 nm





Course RS #3:
12s-13s-12p-0
Distance/Lap: 5.38 nm
P = port rounding S = Starboard rounding

Reduced Resolution Chart Sample
Copyright MapTech Electronic Charts
NOT FOR NAVIGATION

Reduced Resolution Chart Sample
Copyright MapTech Electronic Charts
NOT FOR NAVIGATION

Reduced Resolution Chart Sample
Copyright MapTech Electronic Charts
NOT FOR NAVIGATION

Reduced
Copyright
NO

Reduced
Copyright
NO

VOICE
1/2 ton of Congrats. Plus a
300. All, also are the water
area around it is super to
other grade

ON

LAGSTARS

South Station

Charlestown
Navy Yard

Lincoln Wharf

USS Intrepid

Federal
Reserve Bank

South Station

Tunnel entrance

Tunnel entrance

Tunnel entrance

Tunnel entrance

Tunnel entrance

Tunnel entrance

Tunnel entrance

Tunnel entrance

OSTRICH

Museum St

Maguire St

Maguire St

Maguire St

Maguire St

Maguire St

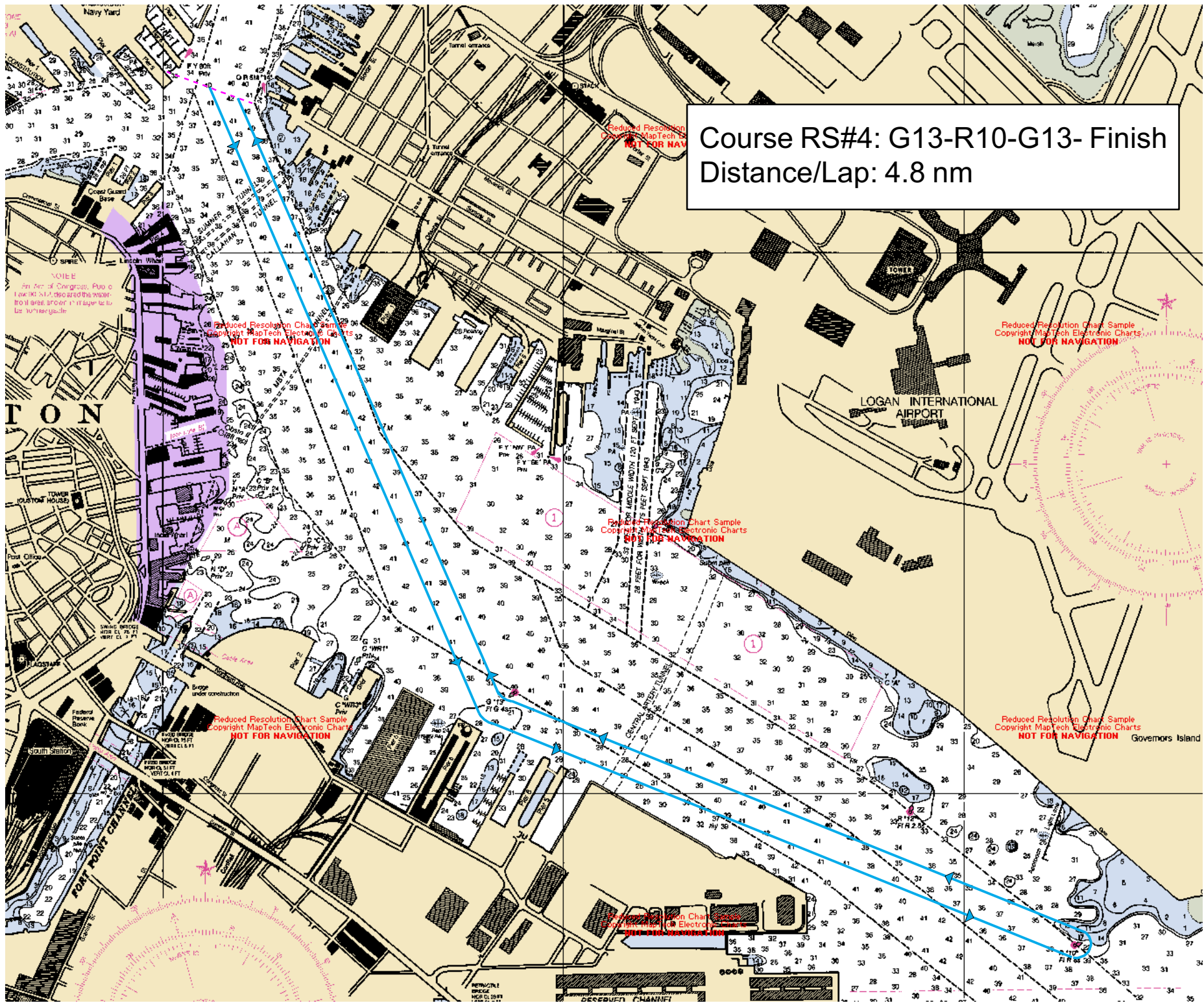
Maguire St

LOGAN INTERNATIONAL
AIRPORT

LOGAN INTERNATIONAL
AIRPORT

LOGAN INTERNATIONAL
AIRPORT

LOGAN INTERNATIONAL
AIRPORT



Course RS#4: G13-R10-G13- Finish
Distance/Lap: 4.8 nm

Reduced Resolution Chart Sample
Copyright MapTech Electronic Charts
NOT FOR NAVIGATION

Reduced Resolution Chart Sample
Copyright MapTech Electronic Charts
NOT FOR NAVIGATION

Reduced Resolution Chart Sample
Copyright MapTech Electronic Charts
NOT FOR NAVIGATION

Reduced Resolution Chart Sample
Copyright MapTech Electronic Charts
NOT FOR NAVIGATION

Reduced Resolution Chart Sample
Copyright MapTech Electronic Charts
NOT FOR NAVIGATION

