



Mark List

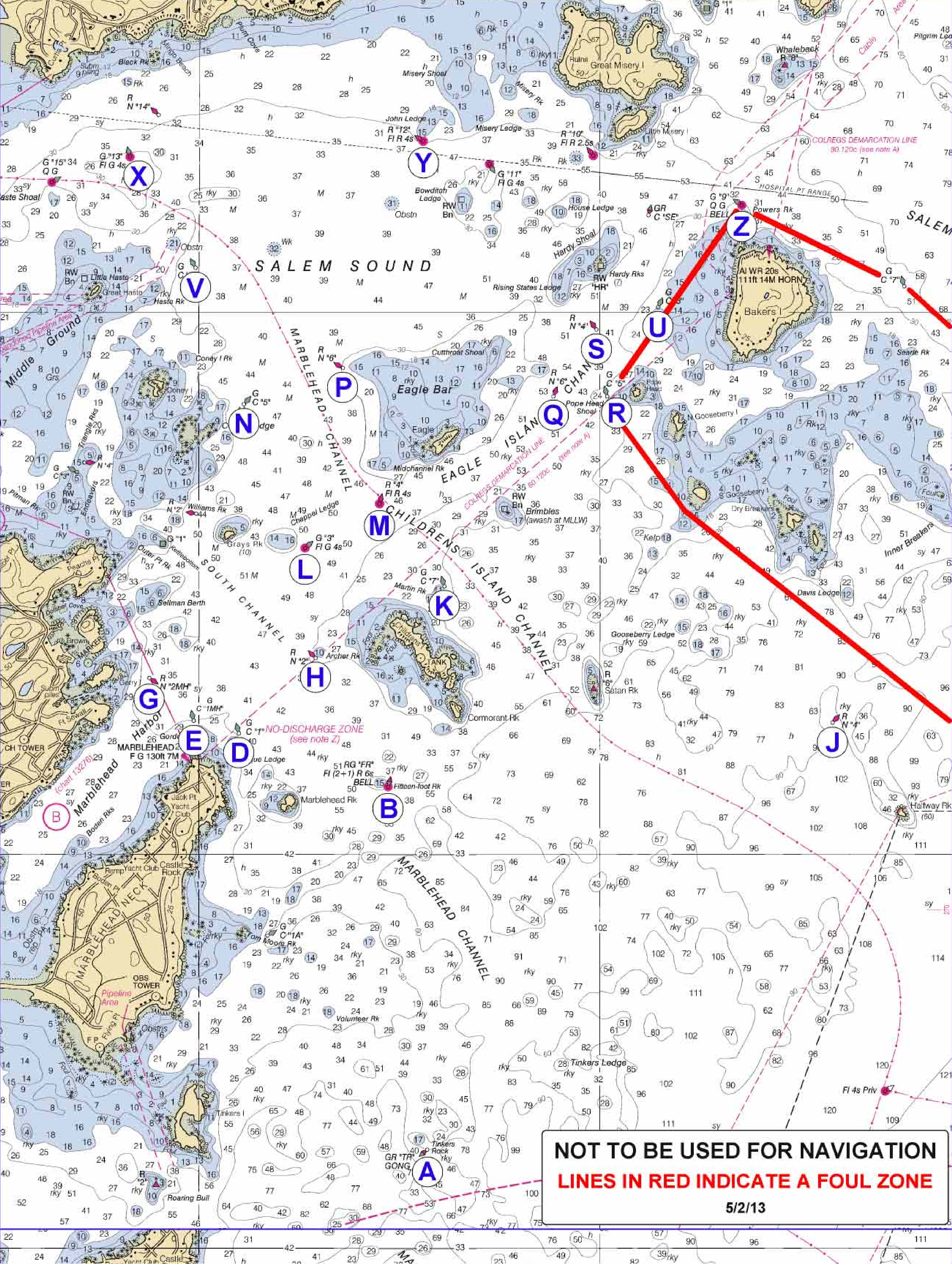
Wednesday Evening Races

Boston Yacht Club Marblehead, MA

West Marine®

RUMSON'S®
LIFE LIVED, LIFE ENJOYED.®

MARK	NAME	DESCRIPTION	LAT	LONG	GOV#
A	Tinkers Gong	GR "TR" GONG	42°28.9123'	70°48.8663'	10410
B	Marblehead Bell	RG "FR" Fl (2+1) R 6s BELL	42°30.2426'	70°49.0773'	10425
C	not used				
D	Lasque Ledge	G C "1"	42°30.4471'	70°49.8011'	10430
E	Gordon Rock	G C "1MH"	42°30.4931'	70°50.0255'	10440
F	Portable Start/Finish	PORTABLE			
G	Gerry Island	R N "2MH"	42°30.6501'	70°50.2455'	10445
H	Archer Rock	R N "2"	42°30.7236'	70°49.4206'	10435
I	not used				
J	Halfway Rock	R N "4"	42°30.4861'	70°46.8391'	10390
K	Martin Rock	G C "7"	42°30.9872'	70°48.7771'	10400
L	Chappel Ledge	G "3" Fl G 4s	42°31.1306'	70°49.4698'	10465
M	Midchannel Rock	R "4" Fl R 4s	42°31.2901'	70°49.0991'	10470
N	Coney Ledge	G C "5"	42°31.6621'	70°49.7755'	10475
O	not used				
P	Eagle Bar	R N "6"	42°31.7952'	70°49.2815'	10480
Q	Eagle Island Channel	R N "6"	42°31.6901'	70°48.2308'	10380
R	Pope Head Shoal	G C "5"	42°31.6867'	70°47.9648'	10375
S	Eagle Island Channel	R N "4"	42°31.9376'	70°48.0170'	10370
T	not used				
U	Eagle Island Channel	G C "3"	42°32.0191'	70°47.7094'	10365
V	Haste Rock	G C "7"	42°32.1621'	70°50.0170'	10490
W	Windward Mark	PORTABLE			
X	Salem Channel	G "13" Fl G 4s	42°32.5781'	70°50.3534'	10035
Y	John Ledge	R "12" Fl R 4s	42°32.6304'	70°48.8817'	10030
Z	Powers Rock	G "9" Q G BELL	42°32.3927'	70°47.2894'	9995



NOT TO BE USED FOR NAVIGATION
LINES IN RED INDICATE A FOUL ZONE
5/2/13