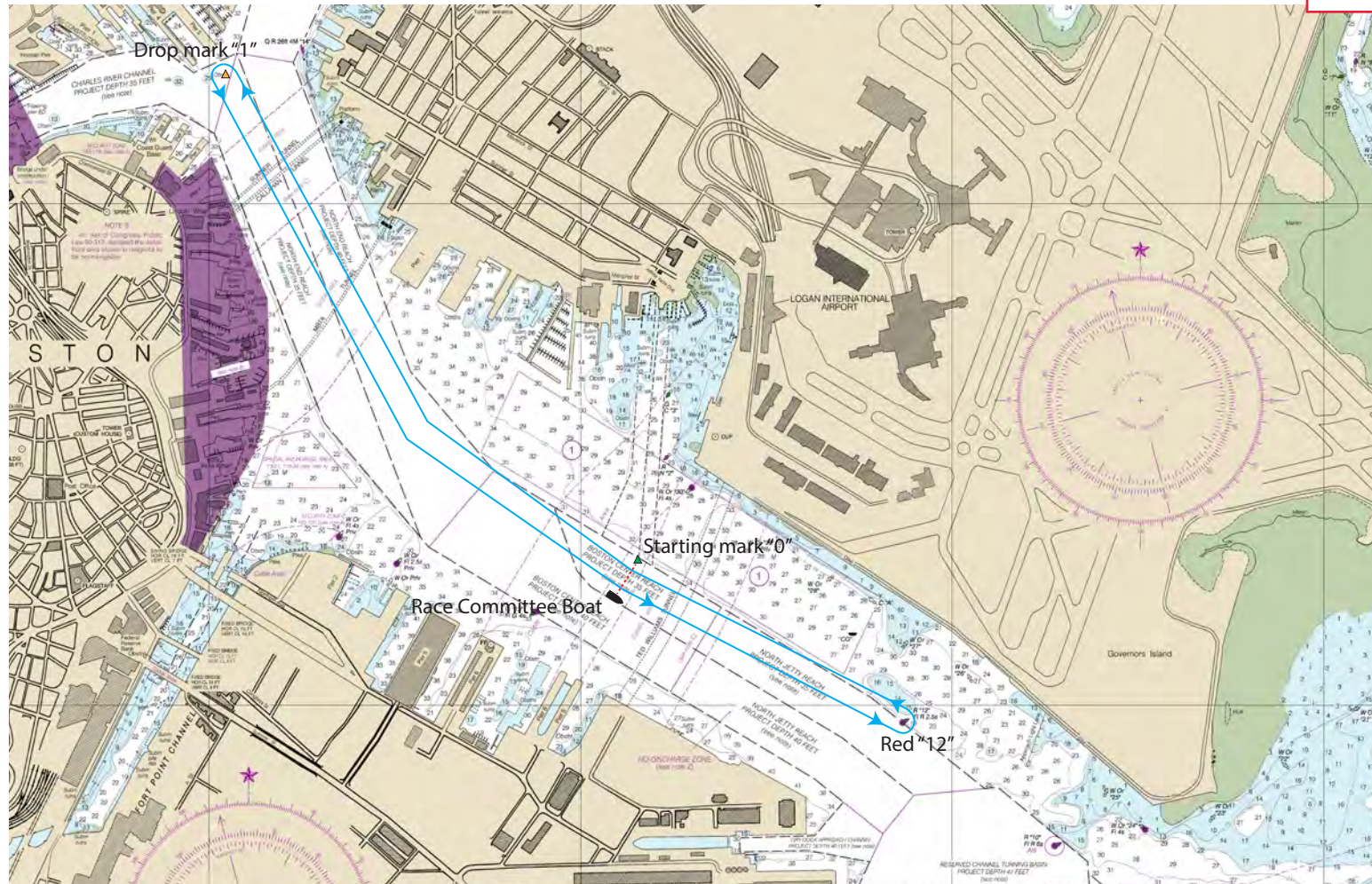
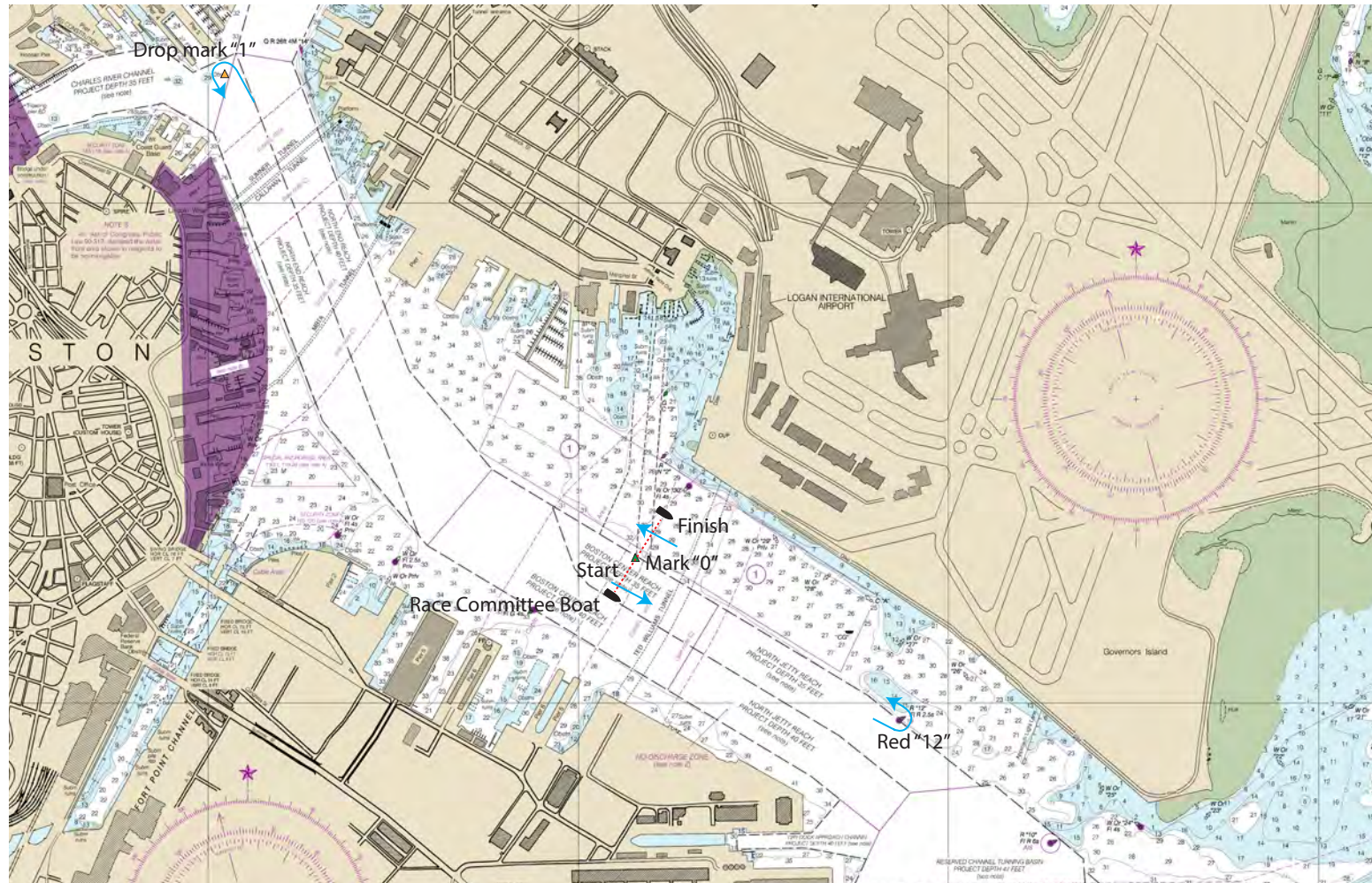


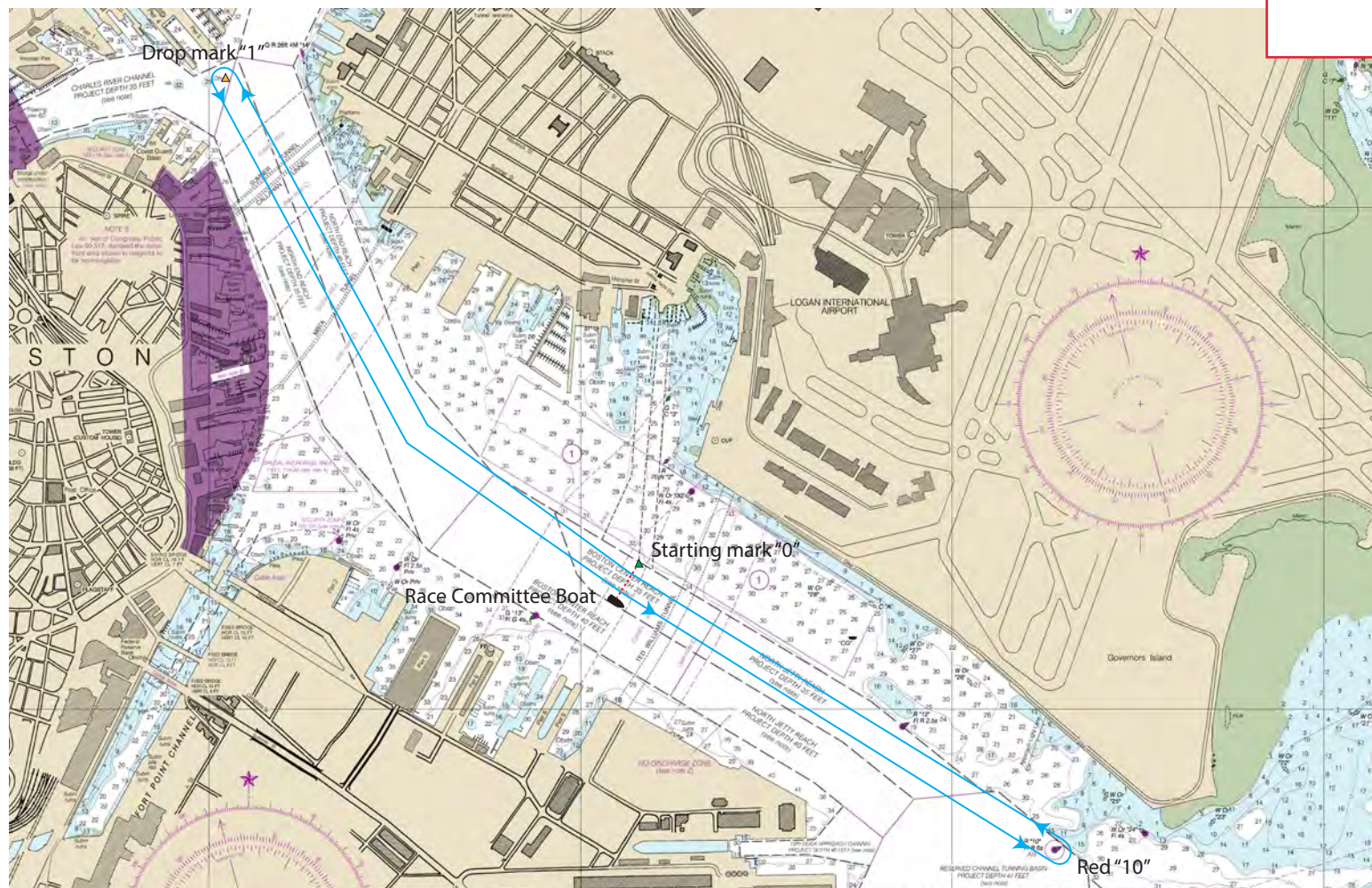
**Easterly 1**  
**0 – 12 – 1 – 0**  
**windward finish**  
**Distance / Lap 2.5 nm**



**Easterly 1 DW**  
**0 – 12 – 1 – 12 – 0**  
**downwind finish**  
**Distance / Lap 3.75 nm**



**Easterly 2**  
**0 – 10 – 1 – 0**  
**windward finish**  
**Distance / Lap 3.6 nm**



**Easterly 2 DW**  
**0 – 10 – 1 – 10 – 0**  
**downwind finish**  
**Distance / Lap 5.6 nm**

