

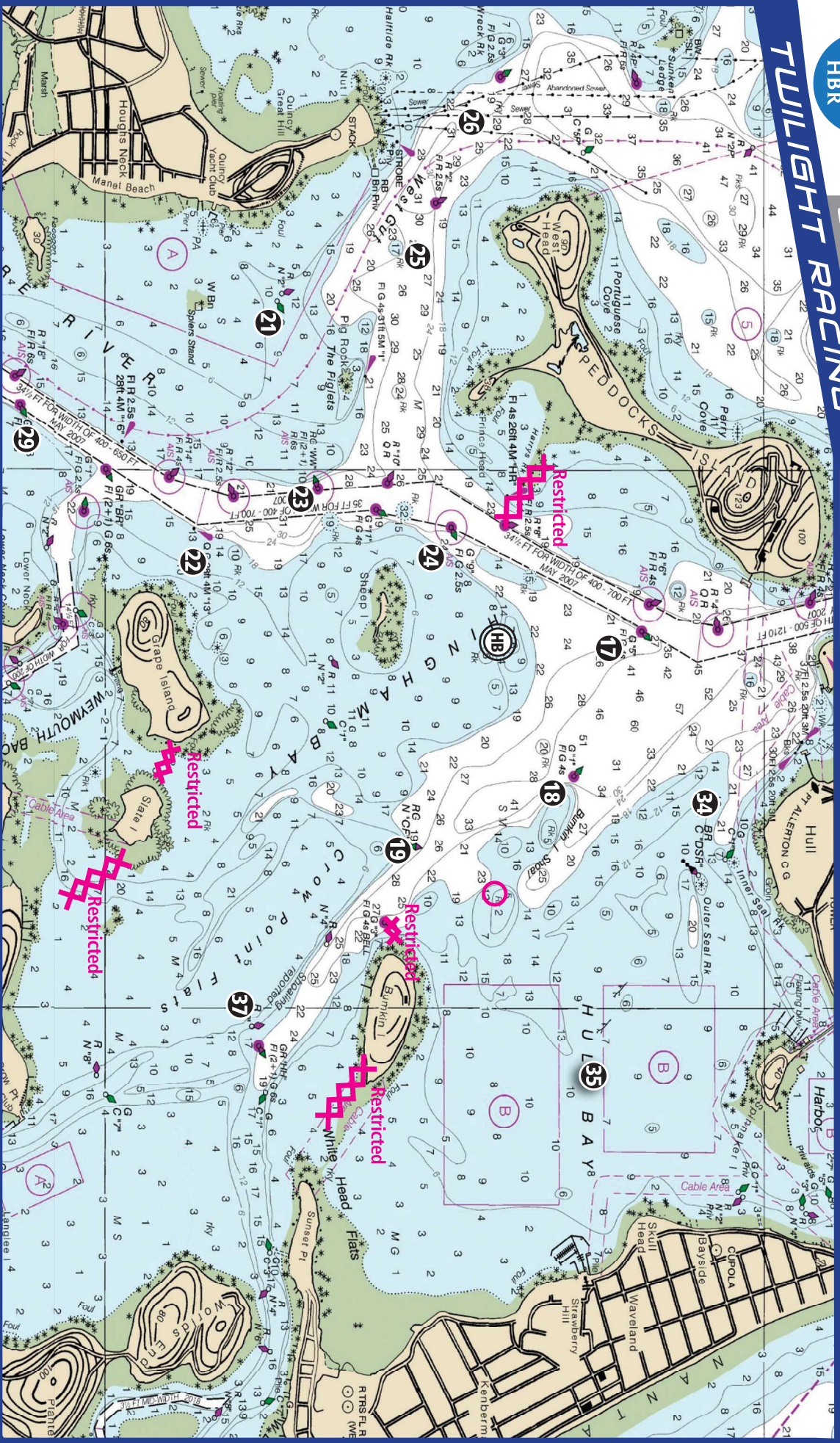


QUICK CHART

TWILIGHT RACING

NOTE:

This chart is for MARK LOCATIONS ONLY and is not intended for determining water depth. For accurate up-to-date soundings, please refer to your current onboard charts.



HINGHAM HARBOR MARKS

HB Hingham Bay Starting Buoy (N of Sheep Is.) White "HBSB"

17 Weymouth Fore River Channel Buoy	G	"5"	FL G 4s
18 Burnkin Island (Shoal) Buoy	G	"1"	FL G 4s
19 Crow Point Flats Buoy (Burnkin Is.)	RG	N "CP"	—
21 Houghs Neck Channel Buoy	G	C "1"	—
22 Weymouth Fore River Channel Light	G	"13"	0 G
23 Western Way Buoy WW	RG	"WW"	FL (2+1) R6s
24 Weymouth Fore River Channel Buoy	G	"g"	FL G 2.5s
25 Western Way Buoy (Peddocks Is.)	R	"2"	FL R 2.5s
26 Western Way Buoy (Peddocks Is.)	G	"3"	FL G 2.5s
29 Weymouth Fore River Channel Buoy	G	"17"	FL G 6s
34 HB HBR Barrel '34' (S of Hull Hill)	Orange	"34"	—
35 HB HBR Barrel '35' (middle of Hull Bay)	Orange	"35"	—
37 Hingham Harbor Approach Buoy	R	N "6"	—



HBR + MBSA SOUTH RACE SCHEDULE 2023

	DATE	RACE	ORGANIZER	START	Q**	TIDES [HINGHAM BAY]				SUNSET
						HIGH	FT	LOW	FT	
MAY	Wed. 10	HBR SKIPPER'S MEETING + 2022 AWARDS CEREMONY	Held at HULL YC	1800 hrs						1954
	Wed. 17	Spring Series Race 1	HB Racing	1830 hrs	Δ	1026	10.0	1627	-0.2	2002
	Wed. 24	Spring Series Race 2	HB Racing	1830 hrs	Δ	1552	8.6	2142	2.0	2008
	Wed. 31	Spring Series Race 3	HB Racing	1830 hrs	Δ	2128	9.8	1512	1.4	2015
JUNE	Sat. 3	Circle The Lights - 22nm Race	HB Racing	1200 hrs	∞	1131	9.3	1728	0.8	2017
	Wed. 7	Spring Series Race 4	HB Racing	1830 hrs	Δ	1452	9.6	2048	0.6	2020
	Wed. 14	Rumble I (Spectacle Island start)	Constitution YC	1830 hrs		2132	10.5	1510	0.9	2023
	Fri./Sun 16-17	Beringer Bowl (overnight)	Boston YC	1200/1900 hrs		1102	9.3	1651	1.1	2024
	Sat. 17	Solstice Regatta	HB Racing	1600 hrs	∞	1149	9.2	1737	1.2	2025
	Wed. 21	Spring Series Race 5	HB Racing	1830 hrs	Δ	1442	8.8	2030	1.7	2026
	Fri. 23-24	Lambert Overnight Ocean Race	Eastern YC	1600 hrs		1606	8.8	2200	1.9	2026
	Wed. 28	Summer Series Race 1	HB Racing	1830 hrs	Δ	1953	9.6	1337	1.6	2026
JULY	Sat. 1	Red, White & Blue Race	Constitution YC	1900 hrs		1013	8.9	1610	1.1	2026
	Wed. 5	Summer Series Race 2	HB Racing	1830 hrs	Δ	1343	9.9	1939	0.1	2025
	Wed. 12	Rumble II (Yellow Nun E start)	Boston Harbor HR	1830 hrs		2012	10.2	1348	1.1	2022
	Sat. 15	Constitution Cup	Boston Harbor HR	1200 hrs		1046	8.7	1631	1.6	2021
	Wed. 19	Summer Series Race 3	HB Racing	1830 hrs	Δ	1336	8.9	1924	1.5	2018
	Fri. 21	Rally to the Crown (South Start) (P-Town Start)	HB Racing	0700 hrs		1451	9.0	2046	1.5	2016
	Sun 23			0800 hrs		1608	9.2	2213	1.5	2015
	Wed. 26	Summer Series Race 4	HB Racing	1830 hrs	Δ	1820	9.5	1205	1.5	2012
Sat. 29	Hitchcock Trophy	Hingham YC	1200 hrs	∞	0847	8.5	1445	1.4	2009	
AUGUST	Wed. 2	Summer Series Race 5	HB Racing	1830 hrs	Δ	1229	10.1	1828	-0.2	2004
	Sat. 5	29th Annual Make-A-Wish Regatta	Boston Harbor HR	1200 hrs		1506	10.9	2112	-0.5	2001
	Wed. 9	Rumble III (Hospital Shoals start)	HB Racing	1815 hrs		1846	10.1	1224	1.1	1955
	Sat. 12	Flip Flop Regatta	Courageous SC	1200 hrs		0934	8.4	1518	1.9	1951
	Wed. 16	Fall Flashlight Series Race 1	HB Racing	1815 hrs	Δ	1230	9.0	1820	1.3	1946
	Fri./Sun. 18-20	Ted Hood		1200 hrs	∞	1341	9.3	1938	1.1	1943
	Wed. 23	Fall Flashlight Series Race 2	HB Racing	1815 hrs	Δ	1651	9.6	2315	1.2	1935
	Sat. 26	38th Annual JFK Regatta	Cottage Park YC	1200 hrs		0719	8.3	1320	1.7	1930
	Wed. 30	Fall Flashlight Series Race 3	HB Racing	1815 hrs	Δ	1132	11.6	1718	-0.2	1923
SEPTEMBER	Wed. 6	Fall Flashlight Series Race 4	HB Racing	1815 hrs	Δ	1716	10.1	2342	0.6	1911
	Sat. 9	Chowder Cup	HB Racing	1200 hrs	∞	0807	8.3	1354	2.2	1906
	Wed. 13	Fall Flashlight Series Race 5	HB Racing	1815 hrs	Δ	1130	9.9	1715	1.2	1859
	Sat. 16	30th Annual Great Chase Race	Hull YC	1300 hrs		1305	9.7	1910	0.6	1854
	Sat 23	Boston Light Race	Savin/Constitution YC	1155 hrs		1321	11.5	1938	-1.2	1827

** QUALIFIERS: Δ Hingham Bay Cup ∞ Hingham Bay + MBSA

FLEET SPONSORS
THANK YOU FOR YOUR SUPPORT!



AQUAMARINE SERVICES



DOCKYARD
Digital Product Innovation

