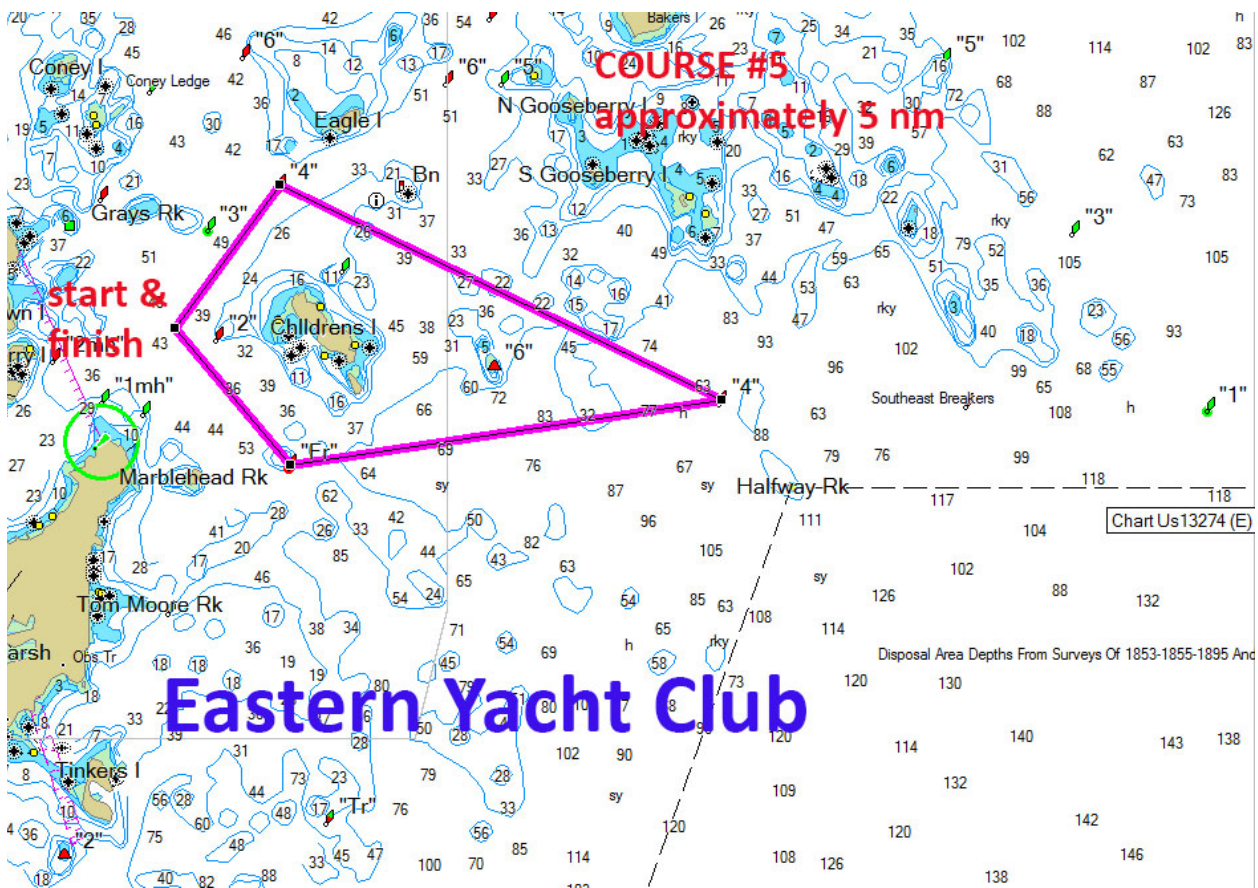


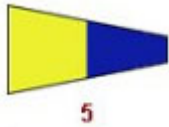
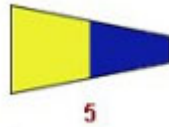


There are 2 possible courses to be used in the EYC Pursuit Races.

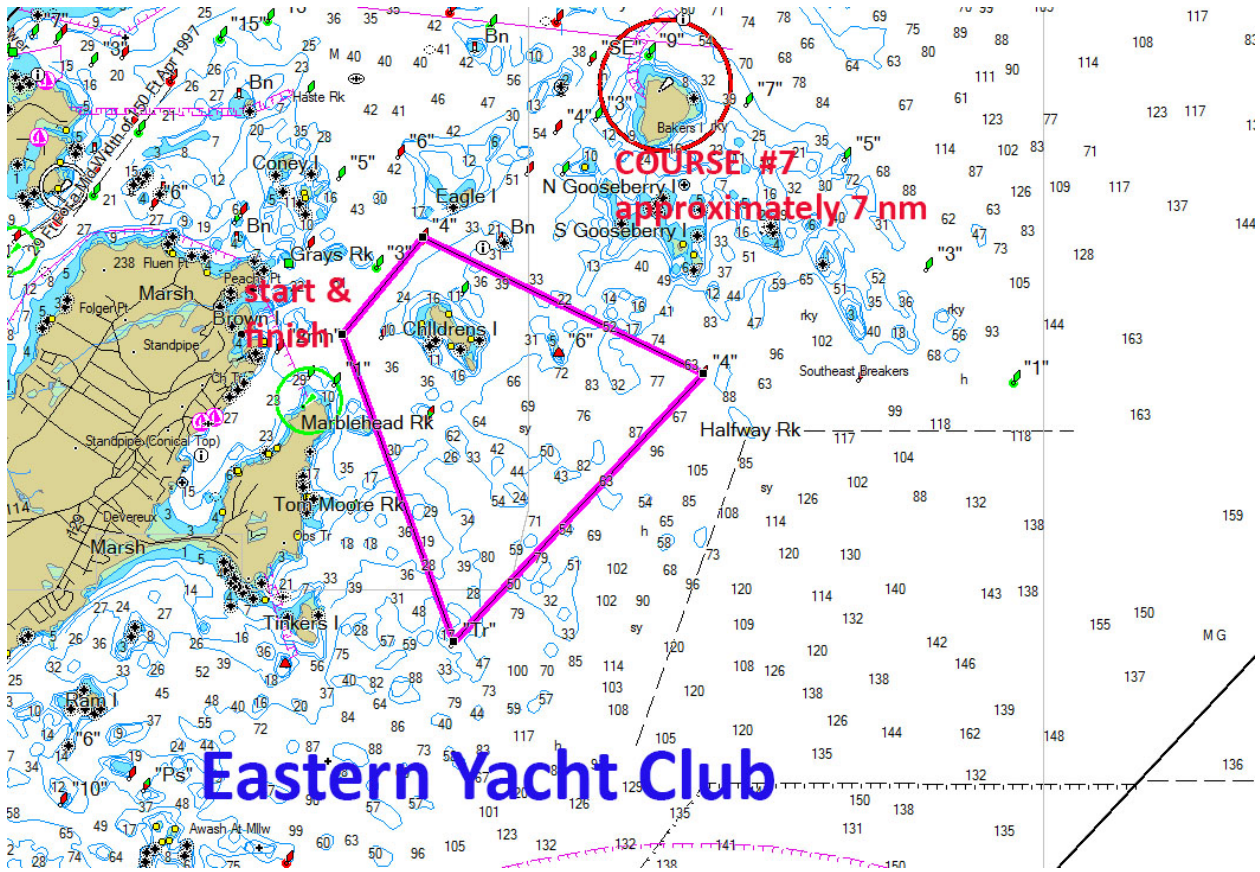
Course #5 is approximately 5 nautical miles long and will be sailed leaving all marks to either port or starboard.





Course #7 is approximately 7 nautical miles long and will be sailed leaving all marks to either port or starboard.

Flags will indicate which direction as shown below the course chart. Start & finish will be between the Signal boat's orange (start) or blue (finish) flag & a green tetrahedron.



	Number 5 flag – Sail Course #5		Number 5 flag – Sail Course #5
	Red flag – Leave all marks to Port		Green flag – Leave all marks to Starboard



 <p style="text-align: center;">7</p>	<p>Number 7 flag – Sail Course #7</p>	 <p style="text-align: center;">7</p>	<p>Number 7 flag – Sail Course #7</p>
	<p>Red flag – Leave all marks to Port</p>		<p>Green flag – Leave all marks to Starboard</p>