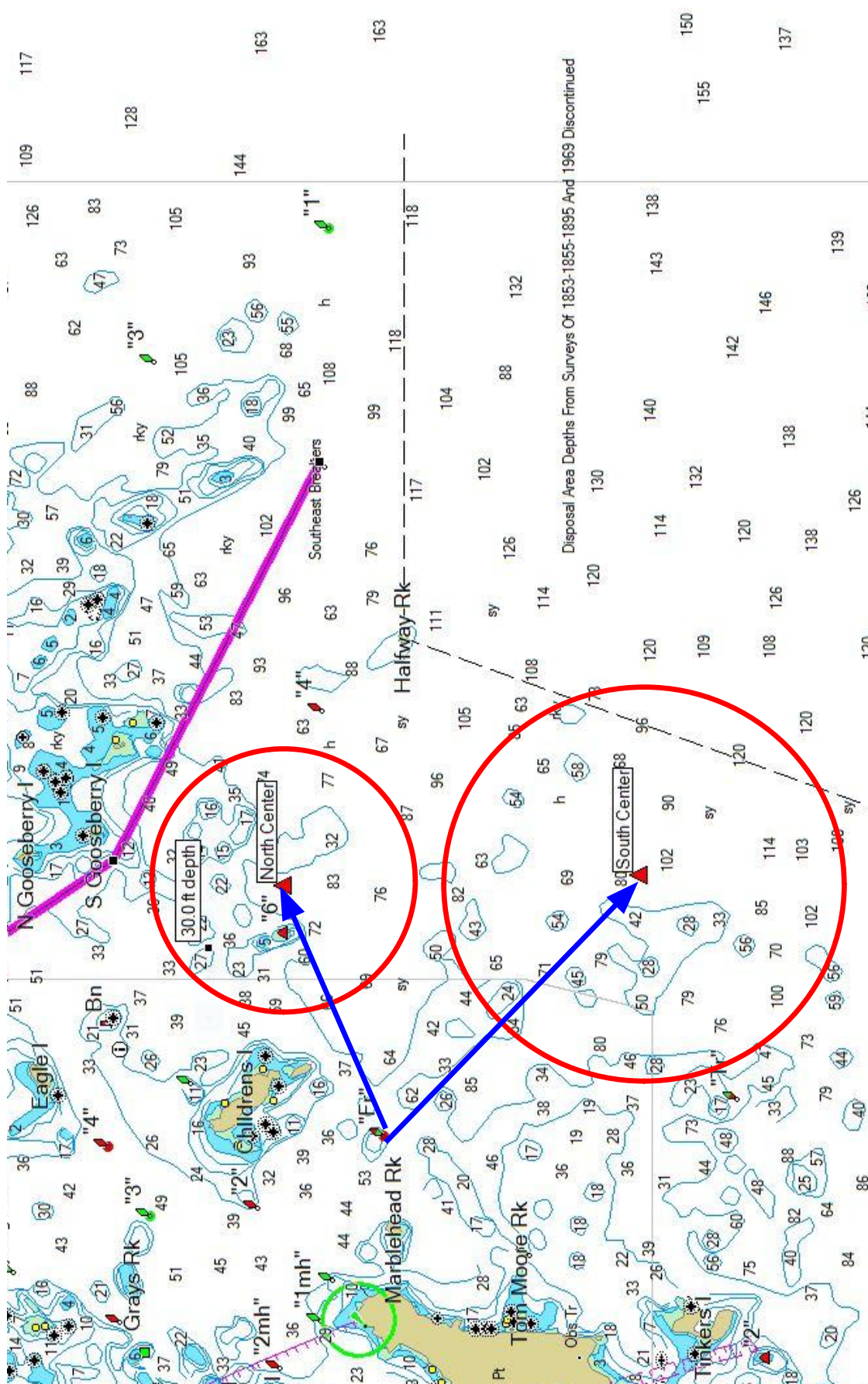


# Marblehead Racing Association Race Circles



NORTH CIRCLE

Diam. = 1.0 nm

MHBell to center  
85 deg-mag  
1.0 nm

Center at  
N 42-30.619  
W 70-47.766

SOUTH CIRCLE

Diam. = 1.5 nm

MHBell to center  
150 deg-mag  
1.4 nm

Center at  
N 42-29.292  
W 70-47.624