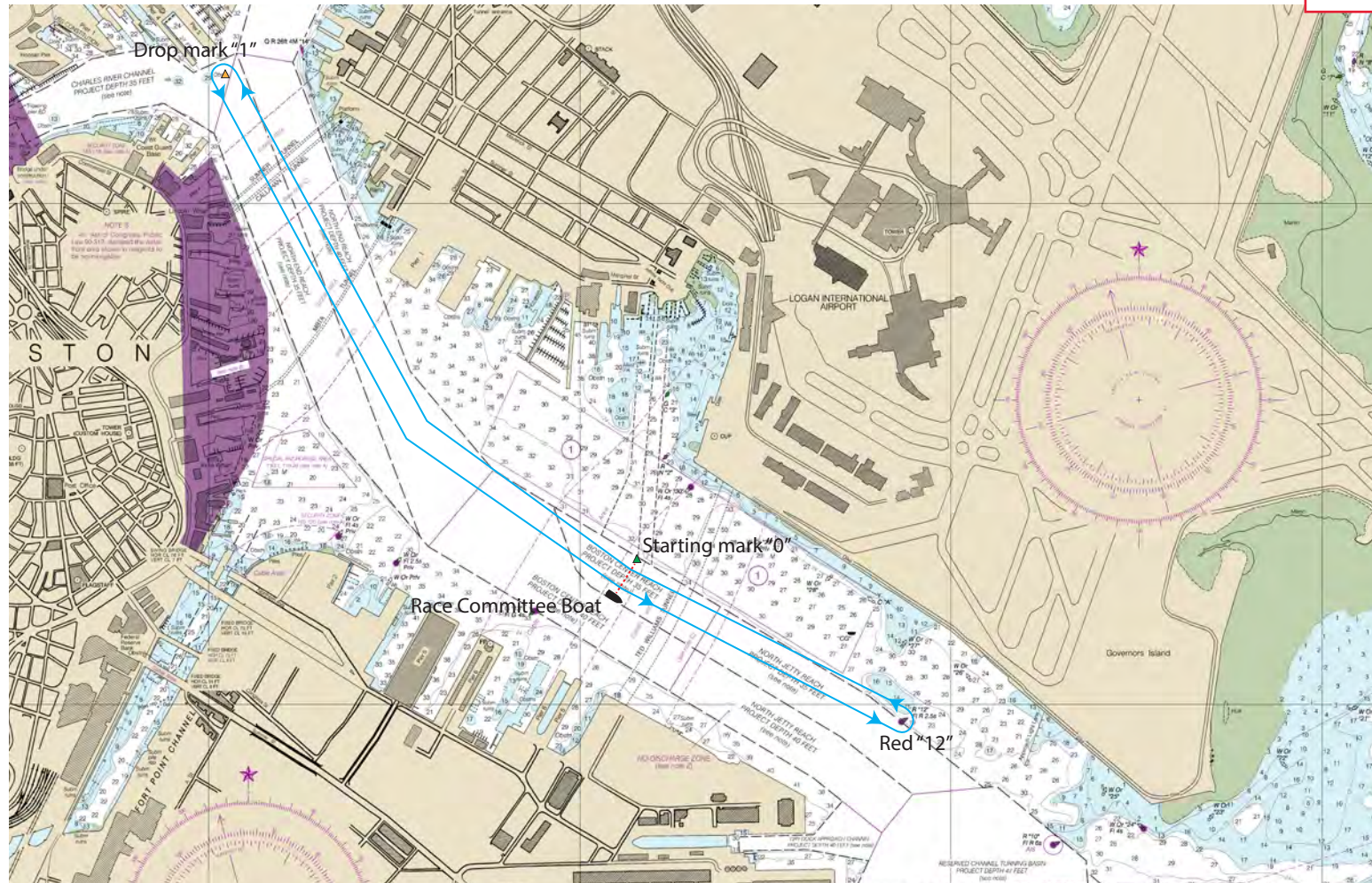
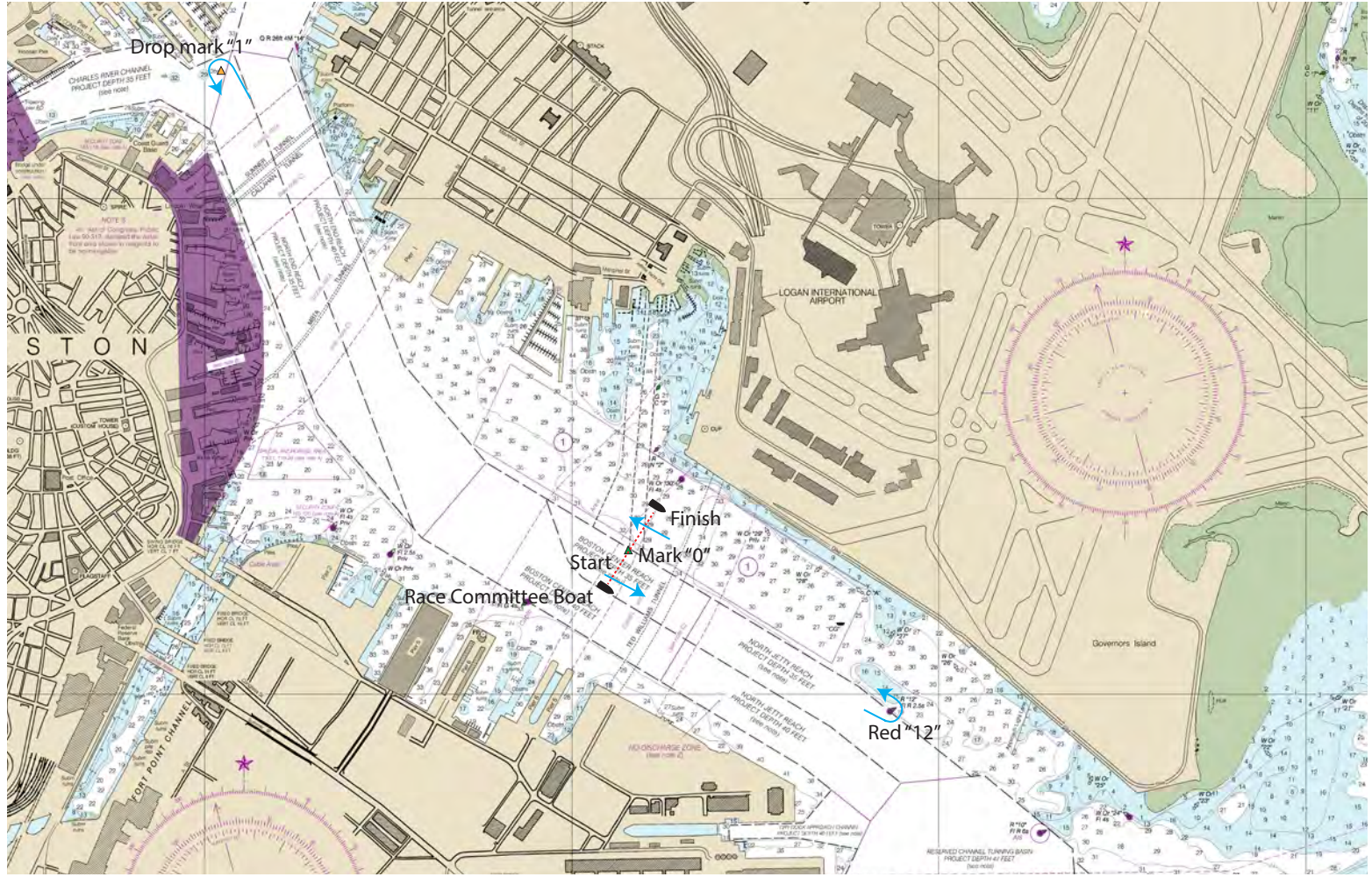


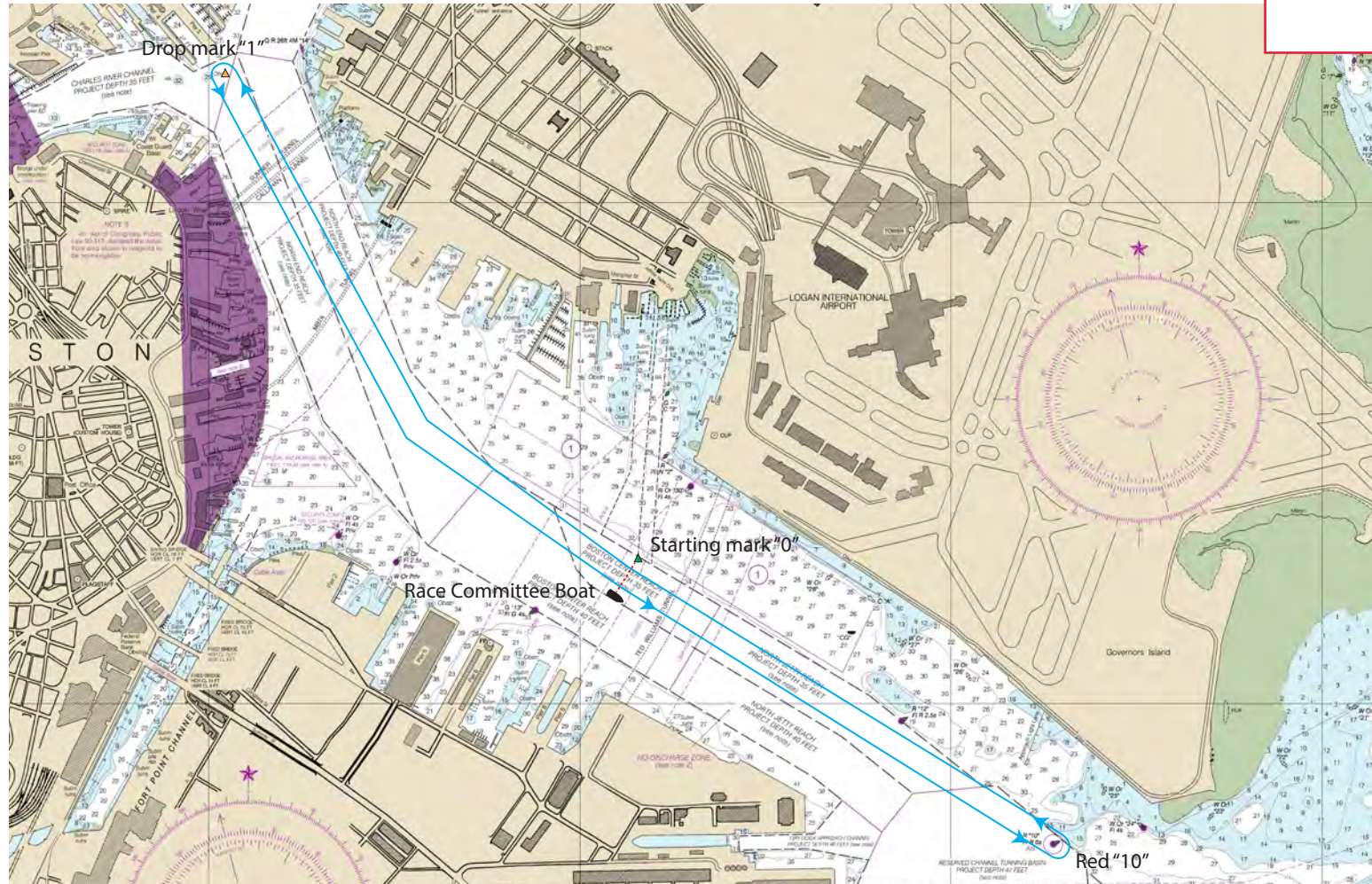
Easterly 1
0 – 12 – 1 – 0
windward finish
Distance / Lap 2.5 nm



Easterly 1 DW
0 – 12 – 1 – 12 – 0
downwind finish
Distance / Lap 3.75 nm



Easterly 2
0 – 10 – 1 – 0
windward finish
Distance / Lap 3.6 nm



Easterly 2 DW
0 – 10 – 1 – 10 – 0
downwind finish
Distance / Lap 5.6 nm

