

purposes is considered equivalent to the World Geodetic System of 1984 (WGS 84). Geographic positions referred to the North American Datum of 1987 do not require conversion to NAD 83 for plotting on this chart.

COPYRIGHT
No copyright is claimed by the United States Government under Title 17, U.S.C. However, other nations may claim intellectual property rights on the compilation of data depicting the foreign waters shown on this chart.

MAGNETIC VARIATION
Magnetic variation curves are for 2014, derived from 2010 World Magnetic Model and accompanying secular change. If annual change is in same direction as variation, it is additive and the variation is increasing. If annual change is opposite in direction to variation it is subtractive and the variation is decreasing.

NOTE A
Navigation regulations are published in Chapter 2, U.S. Coast Pilot 1 & 2. Additions or revisions to Chapter 2 are published in the Notice to Mariners. Information concerning the regulations may be obtained at the Office of the Commander, 1st Coast Guard District in Boston, MA, or at the Office of the District Engineer, Corps of Engineers in Concord, MA. Refer to charted regulation section numbers.

NOTE C
PRECAUTIONARY AREAS
Traffic within the Precautionary Areas may consist of vessels operating between Portland Harbor or Boston Harbor and one of the established traffic lanes. Mariners are advised to exercise extreme care in navigating within these areas.

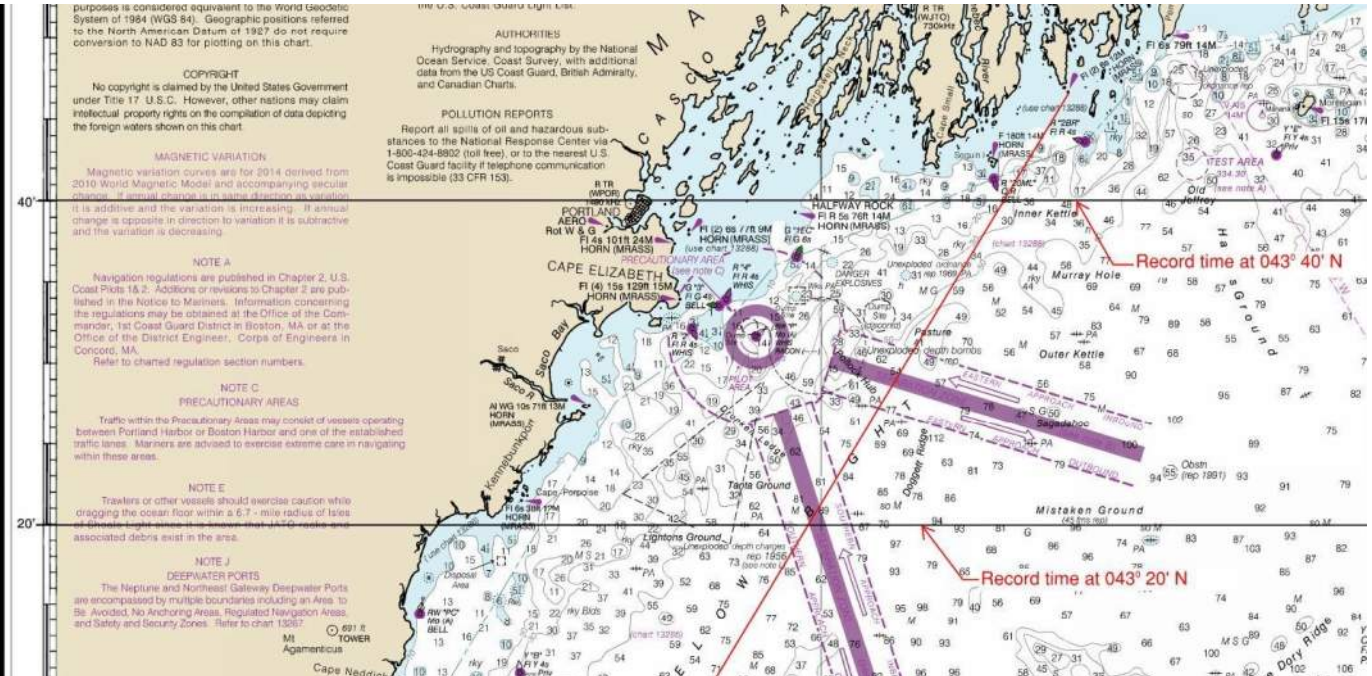
NOTE E
Trawlers or other vessels should exercise caution while dragging the ocean floor within a 6.7-mile radius of Isles of Shoals Light since it is known that LSTD rocks and associated debris exist in the area.

NOTE J
DEEPWATER PORTS
The Neptune and Northeast Gateway Deepwater Ports are encompassed by multiple boundaries including an Area to Be Avoided, No Anchoring Areas, Regulated Navigation Areas, and Safety and Security Zones. Refer to chart 13267.

the U.S. Coast Guard Light List.

AUTHORITIES
Hydrography and topography by the National Ocean Service, Coast Survey, with additional data from the US Coast Guard, British Admiralty, and Canadian Charts.

POLLUTION REPORTS
Report all spills of oil and hazardous substances to the National Response Center via 1-800-424-8802 (toll free), or to the nearest U.S. Coast Guard facility if telephone communication is impossible (33 CFR 153).



Record time at 043° 40' N

Record time at 043° 20' N