

# Event Sailing Instructions

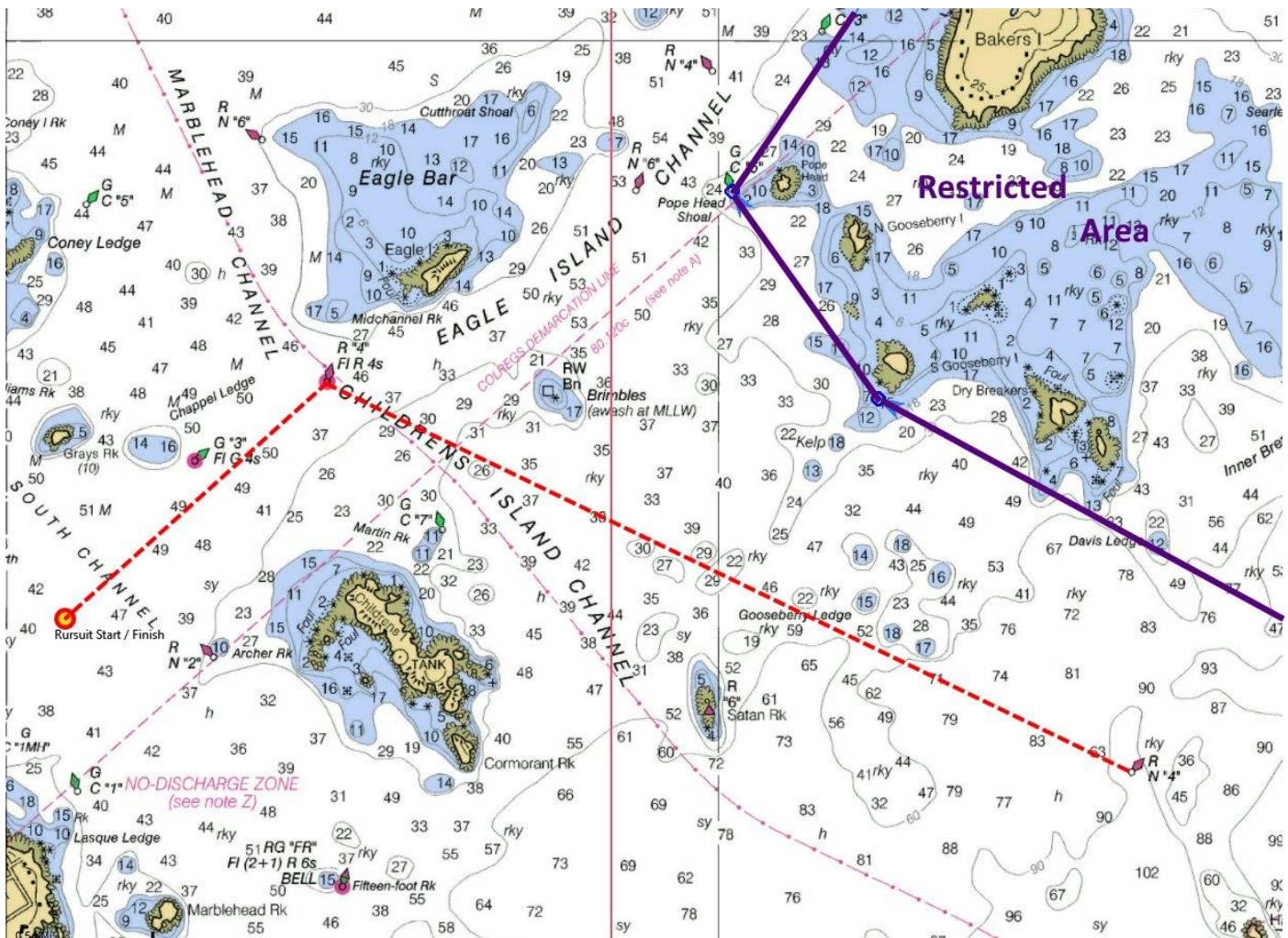
## AMENDMENT #1 (RESTRICTED AREA)

### RESTRICTED AREA BOUNDARY

This is an addition to the Event Sailing Instructions (ESI) and applies to all EYC Pursuit Races. This is a navigational safety issue.

The Mass Bay Sailing Association (MBSA) has defined a Restricted Area within the general vicinity that we race in. It is fully defined in the MBSA Yearbook. This Restricted Area is hereby made part of the EYC Pursuit Races. A boat racing in these events shall not enter the Restricted Area. The penalty for entering this area is disqualification (DSQ).

This Restricted Area is adjacent to the rhumb line between Government Mark (GM) R4, nearby Halfway Rock & GM R4, nearby Eagle Island. It is shown on the chart below by a purple line.



/s/ John Cochrane

John J. Cochrane, PRO

EYC Race Committee

Posted: 8/1/2020 at 1900 hrs.