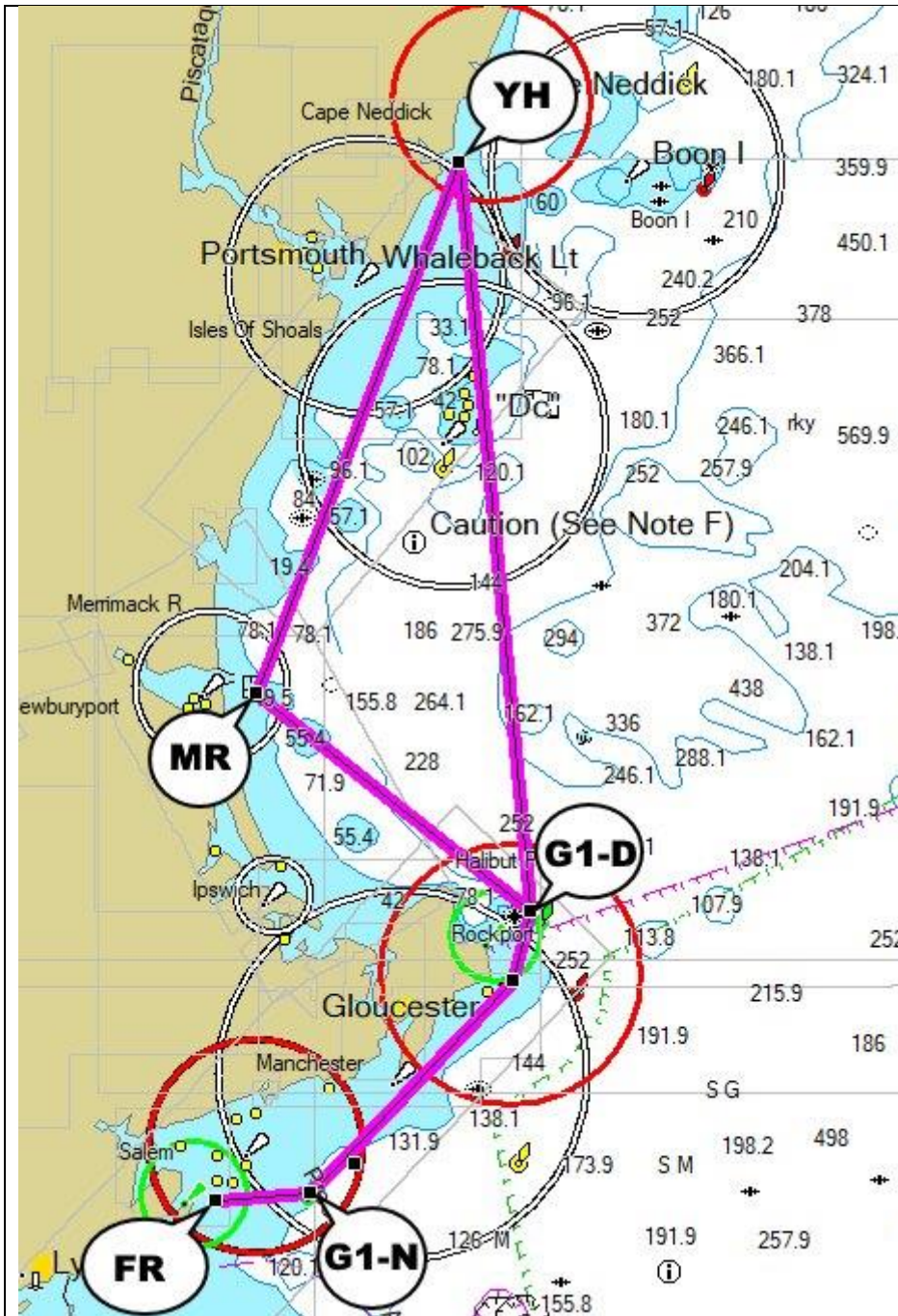
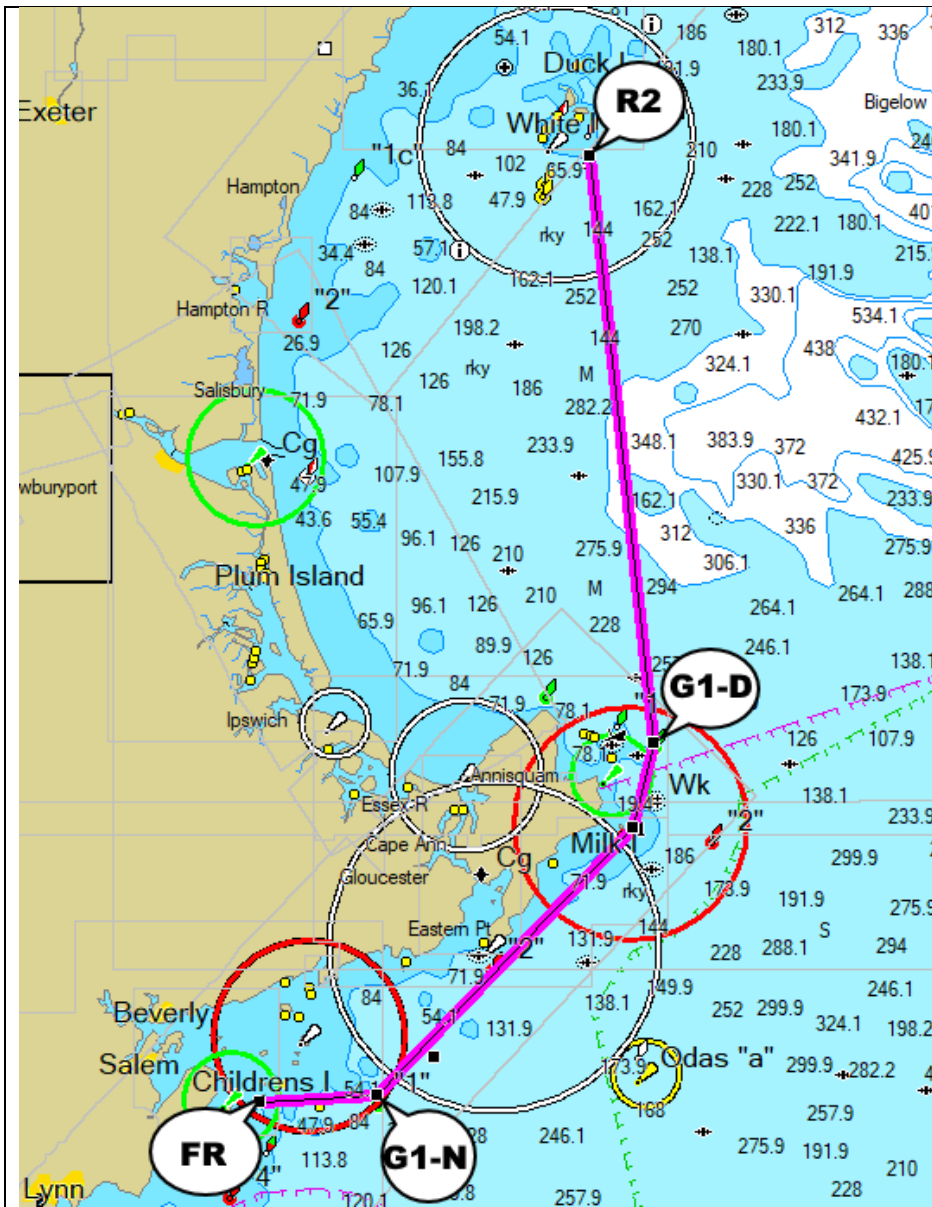


Eastern Yacht Club Lambert Overnight Ocean Race

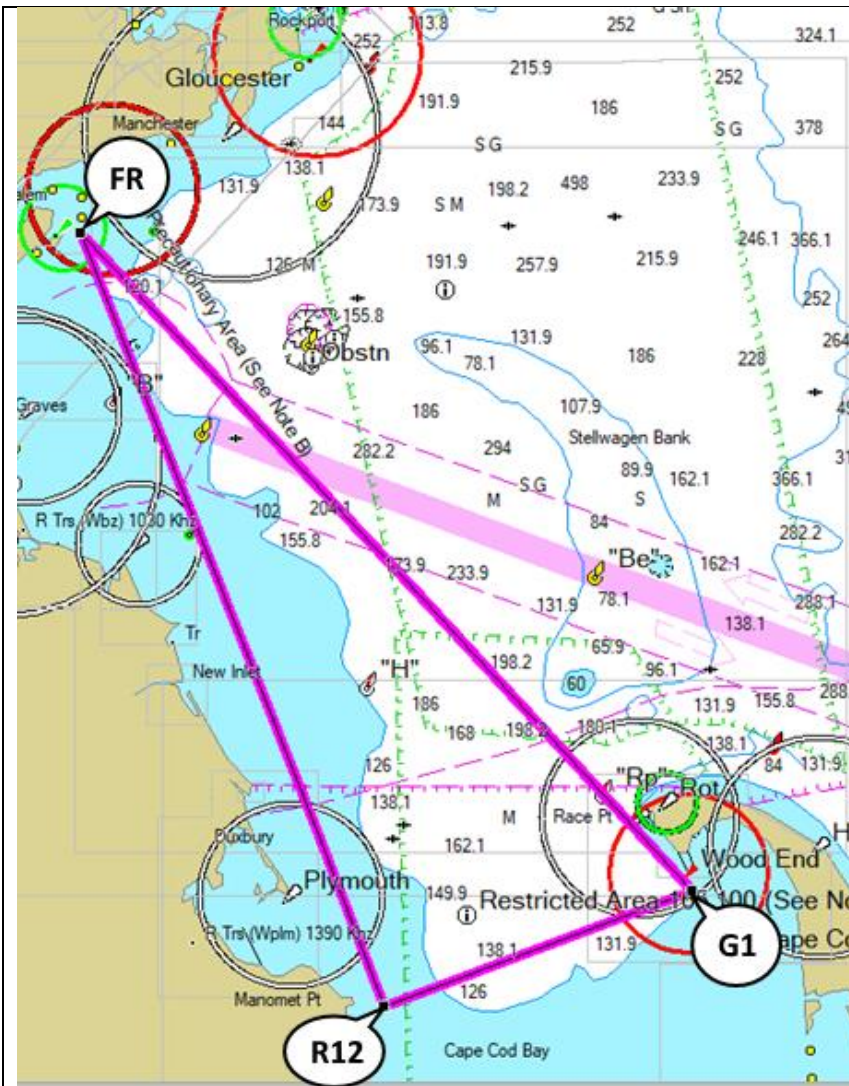
Proposed Courses



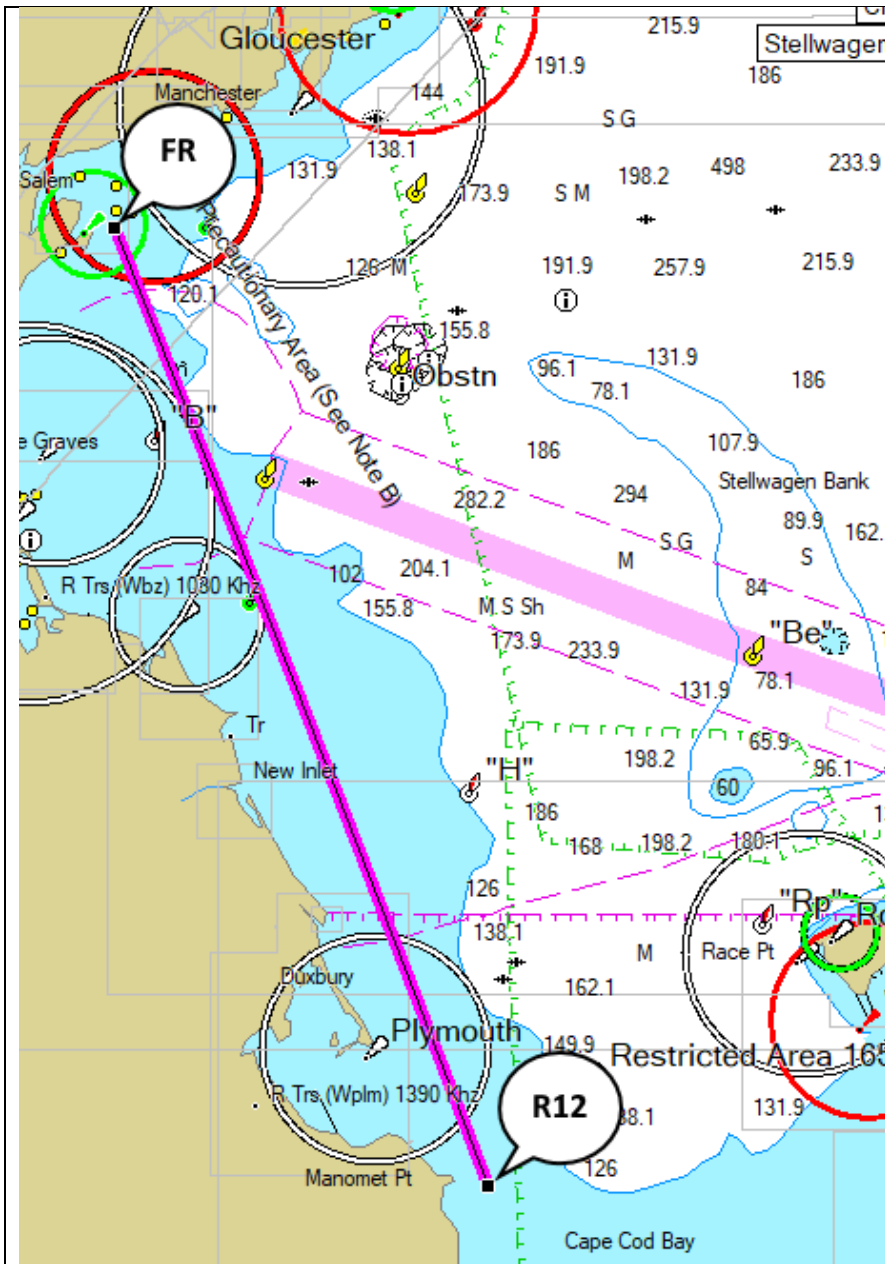
NORTH Course - LONG		
Leave Mark		LONG CRS
to		nm
Start	FR - MHD Bell	
		3
port	G1-N - Newcombs Ledge	
		11
port	Not a Mark - Thacher Is	
port	G1-D - Dry Salvages	
		27
port	YH - York Harbor	
		21
port	MR - at Merr River	
		13
starboard	G1-D - Dry Salvages	
starboard	Not a Mark - Thacher Is	
		11
starboard	G1-N - Newcombs Ledge	
		3
Finish	FR - MHD Bell	
	TOTAL DISTANCE (nm) =	94



NORTH Course - SHORT		
Leave Mark		SHORT CRS
to		nm
Start	FR - MHD Bell	
		3
port	G1-N - Newcombs Ledge	
		11
port	Not a Mark - Thacher Is	
port	G1-D - Dry Salvages	
		17
port	R2 - Anderson Ledge	
		17
starboard	G1-D - Dry Salvages	
starboard	Not a Mark - Thacher Is	
		3
starboard	G1-N - Newcombs Ledge	
		11
		3
Finish	FR - MHD Bell	
	TOTAL DISTANCE (nm) =	68



SOUTH Course - LONG		
Leave Mark		LONG CRS
to		nm
Start	FR - MHD Bell	
		37
port	R12 - Mary Ann Rocks	
		15
port	G1 - P-town Harbor - G1	
		41
Finish	FR - MHD Bell	
	TOTAL DISTANCE (nm) =	93



SOUTH Course - SHORT		
Leave Mark		SHORT CRS
to		nm
Start	FR - MHD Bell	
		37
	port	R12 - Mary Ann Rocks
		37
Finish	FR - MHD Bell	
		TOTAL DISTANCE (nm) = 74