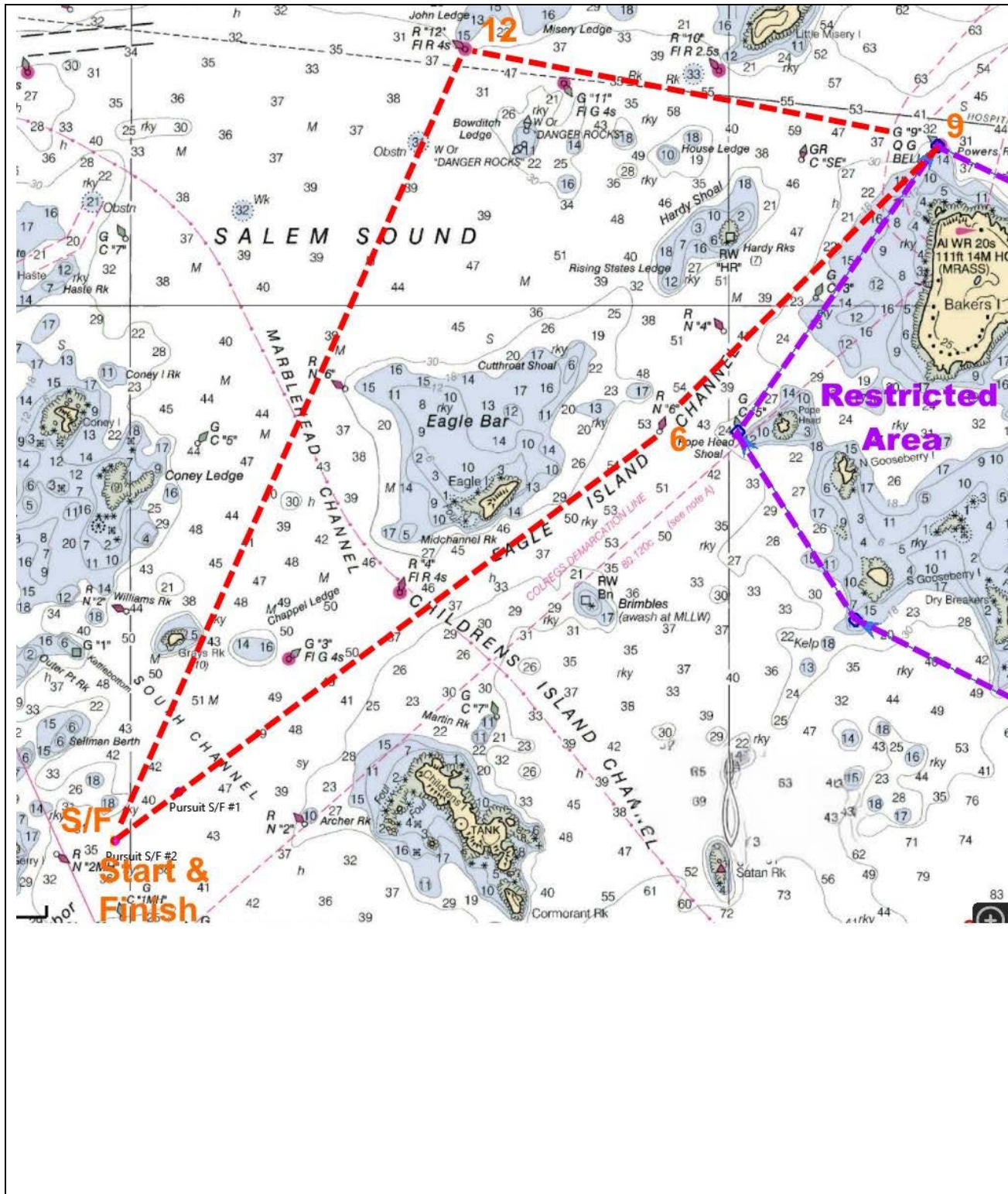




**COURSE #6**

Course #6 is approximately 6 nautical miles long and will be sailed leaving all marks to either port or starboard. Placards will indicate which direction as shown below the course chart. The start & finish will be between the Signal boat's orange (start) or blue (finish) flag & a green tetrahedron.



Placard #6



Over a **RED** placard

Means sail Course #6 Leaving all marks to port

First mark is GM # **6** NE of Eagle Island

-----  
**6** → **9** → **12** → **F**

Placard #6



Over a **GREEN** placard

Means sail Course #6 Leaving all marks to starboard

First mark is GM **12** in Salem Sound

-----  
**12** → **9** → **6** → **F**