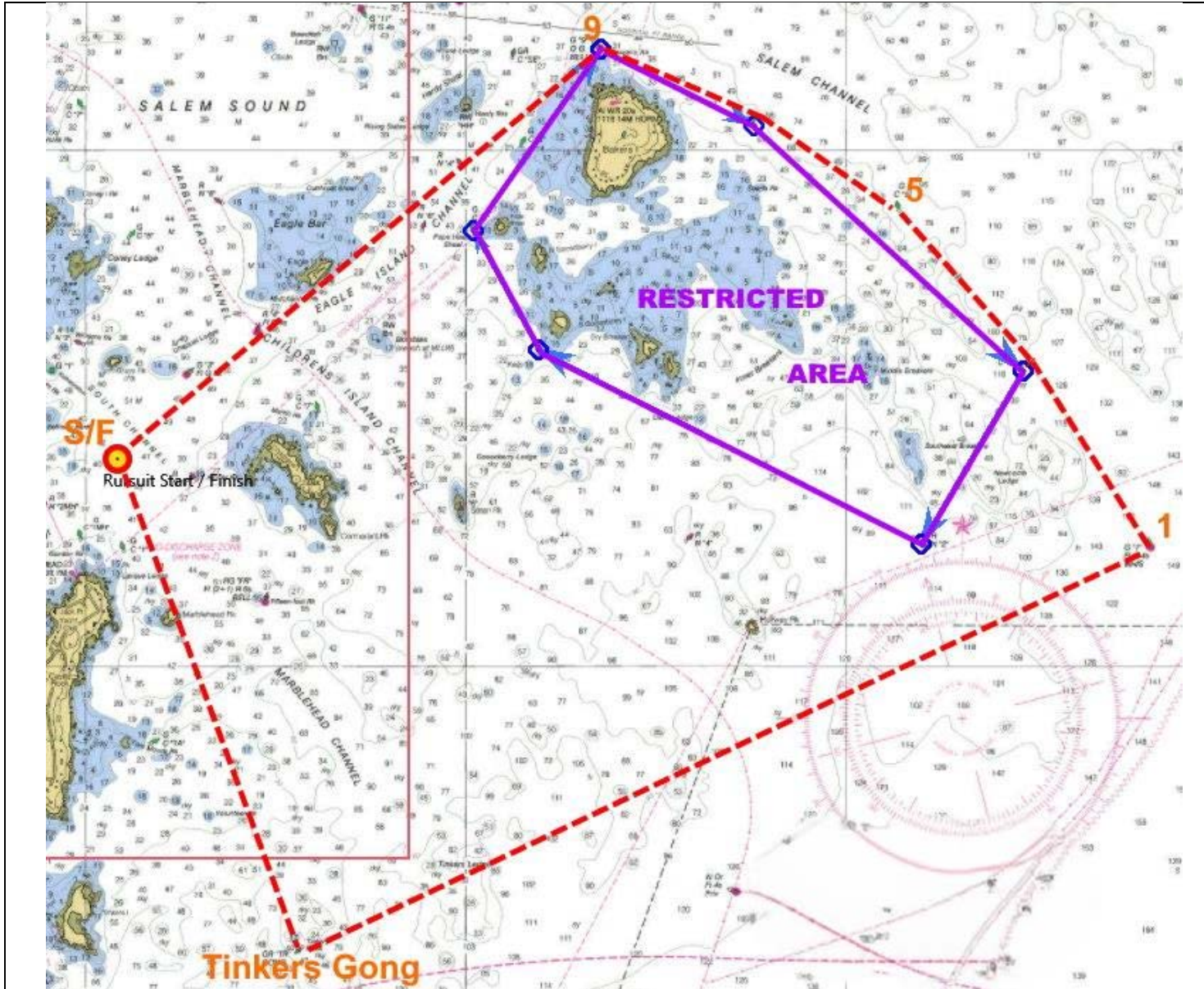


DESCRIPTION of COURSE 11

COURSE #11

Course #11 is approximately 11 nautical miles long and will be sailed leaving all marks to either port or starboard.

Placards will indicate which direction as shown below the course chart. Start & finish will be between the Signal boat's orange (start) or blue (finish) flag & a green tetrahedron.



Placard #1

1

Over a **RED** Placard

Means sail Course #11
Leaving all marks to port

First mark is
Tinkers Gong (TR)

Placard #1

1

Over a **GREEN** placard

Means sail Course #11
Leaving all marks to starboard

First mark is
9 (G9 Powers Rock)