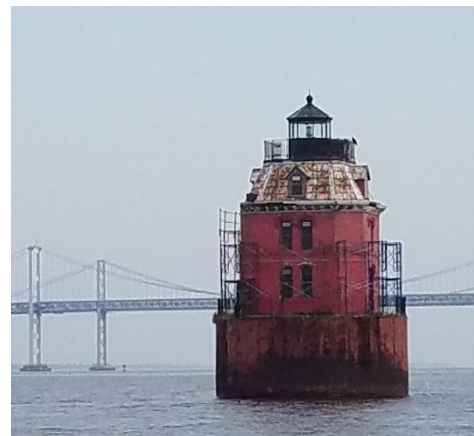
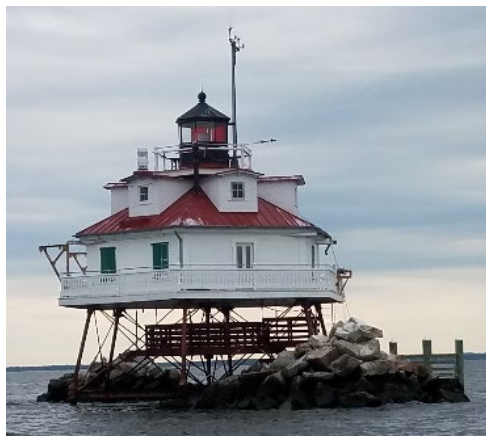


In Support of Spirit Foundation

SCC Spring Regatta Sailing Instructions SUNDAY, May 16, 2021



Organizing Authority: Sailing Club of the Chesapeake
CBYRA Sanction # 309
scc1944.clubexpress.com

WITH AMENDMENT #1 – changes in bold

1 Rules

The regatta will be governed by the rules as defined in the current Racing Rules of Sailing. The US Sailing SER “Nearshore Safety Equipment Requirements” apply and confirm or supplement the USCG requirements and the Racing Rules of Sailing except as amended by specific class association rules.

2 Communications

Notices to competitors will be posted on the official event website

https://www.regattaman.com/def_event_page.php?race_id=679&yr=2021

On the water, the race committee intends to make all announcements to competitors via VHF channel 73.

Cruising Division



www.sandraklibby.com

Thank you to our sponsors!

3 Schedule

Start when you want, and where you want! It just needs to be between 1100 and 1500 on Sunday May 16, and at your choice of course marks.

4 Class flags

Class flags may be flown if desired.

5 Racing area

The racing area will be the Severn River and the Chesapeake Bay between Sandy Point and Thomas Point.

6 Course and marks

The course will consist of a triangle with 3 vertices:

- ~~FL G "95" approximately 1100 yards SSE of Sandy Point Lighthouse~~
- GR C "SR" approximately 700 yards SSE of Thomas Point Lighthouse
- GC "7" approximately 500 yards NE by E of the Horn Point "shoal pole"

The attached diagram shows the course marks. The course may be sailed in either direction. All marks shall be rounded to port.

Alternate marks for lighter winds forecast:

- GC "1" off Hackett's Point
- ~~FL R 2.5s R"2" at the mouth of the Severn River~~

The following marks shall always be passed on the channel side

- "1AH" at Tolly Point
- FL R 6S 15ft 4M "4" off Greenbury Point

See updated course diagram in Appendix A

All competitors shall pass under the Bay Bridge at center span or the spans immediately adjacent.

The specific course IS posted online no later than 1200 Saturday 15 MAY 2021.

7 "Pick your own" starting and finishing lines

You can save a lot of transit time if your home port is on the Magothy, South, West, or other rivers!

Take your own start and finish times and log them online at

https://www.regattaman.com/def_event_page.php?race_id=679&yr=2021 **You may start at your choice of vertex;** you must finish at the same point. The start/finish line shall lie between the GR C "SR" and its adjacent lighthouse, GC "1" and a line bearing ~ 058°M to the center of the main channel span



Thank you to our sponsors!

extending 150 yards from GC"1", or GC"7" and an orange flag on the RC boat. If the RC boat is no longer on station, the finish line will extend 150 yards on a bearing 240°M from GC "7".

8 Time limit

No time limit for cruising division.

9 Protests

This is supposed to be fun. Please sail with a sense of sportsmanship! If you break a rule or foul another boat, please take your penalties on the water. Otherwise, If you must, file electronically using <https://cdn.ussailing.org/wp-content/uploads/2018/01/US-Sailing-2017-2020-Protest-Form.pdf>

10 Scoring

Only one race will be held. Scores will be calculated based on the self-reported start and finish times entered online by each skipper.

11 Safety

A boat shall not exercise right of way, cross in proximity to, or interfere with reasonable transit of the race area by commercial traffic of any kind. Boats must take evasive action well in advance of a potentially dangerous situation. The US Coast Guard, ship captains, and bay pilots have been encouraged to report any incident they observe. A boat without way may use any means of propulsion to avoid underway commercial traffic, provided:

- (a) the boat does not gain an advantage;
- (b) using the propulsion is the boat's only means of avoiding the commercial traffic; and,
- (c) the boat submits a report (in writing or by email) to the RC by the protest filing deadline that describes the incident and the boat's actions.

12 Awards

BEER! For all sailors of legal drinking age, to be collected after finishing from a separate RC boat approximately 50 yards NW of the finish line. Cruising division boats may collect their beer while rounding GC"7", but may not file redress for any delays associated with said provisioning. Enjoy it responsibly as there will not be a formal post-race party. No further prizes will be awarded, but swag can be ordered from <https://www.ewespirit.org/ewe-stuff>

Racing Division

3 Schedule

The Warning signal will be made at 1200 Sunday 16 MAY 2021 at GC"7" off Horn Point.



Thank you to our sponsors!

4 Class flags

Class flags shall be flown in accordance with CBYRA Green Book. **Any PHRF class flag may be flown for PHRF spinnaker class.**

5 Racing area

The racing area will be the Severn River and Chesapeake Bay between Sandy Point and Thomas Point.

6 Course and marks

The course will consist of a triangle with 3 vertices:

- ~~FL G "95" approximately 1100 yards SSE of Sandy Point Lighthouse~~
- GR C "SR" approximately 700 yards SSE of Thomas Point Lighthouse
- GC "7" approximately 500 yards NE by E of the Horn Point "shoal pole"

Alternate marks for smaller boats and/or lighter winds forecast:

- GC "1" off Hackett's Point
- ~~FL R 2.5s R "2" at the mouth of the Severn River~~

A race committee vessel may set a stand-off buoy. When present, this stand-off buoy, the line attaching it to the race committee vessel, and the race committee vessel are all part of the starting or finishing mark.

The attached diagram shows the course marks. The course may be sailed in either direction. All marks shall be rounded to port. The course length and specific marks to be used will be posted 24 hours prior to the start.

The following marks shall always be passed on the channel side **for all keelboat classes.**

- "1AH" at Tolly Point
- FL R 6S 15ft 4M "4" off Greenbury Point

~~All competitors in keelboat classes shall pass under the Bay Bridge at center span or the spans immediately adjacent.~~

7 Start

The start shall lie between GC "7" and an orange flag on the RC boat to the SW of the mark. Each boat shall have a prescribed pursuit style starting time corresponding to her rating and calculated for the course distance. Boats may start no earlier than their assigned start time. Any vessel starting early will receive a 20 minute penalty without a hearing and need not re-start. **The starting sequence is posted online.** Starting times may be altered by postponement. As a courtesy only, the race committee will make broadcasts on VHF channel 73 of the time during the pursuit style starting sequence. A boat that does not start within 30 minutes after her starting signal will be scored Did Not Start without a hearing. This changes RRS A4 and A5.



Thank you to our sponsors!

8 Finish

The finish line shall lie between GC"7" and an orange flag on the RC boat to the SW of the mark.

9 Time limit

Any yacht not finishing by 1630 Sunday 16 MAY 2021 will be scored TLE.

10 Protests

This is supposed to be fun. Please sail with a sense of sportsmanship! If you break a rule or foul another boat, please take your penalties on the water. Otherwise, If you must, file electronically using <https://cdn.ussailing.org/wp-content/uploads/2018/01/US-Sailing-2017-2020-Protest-Form.pdf>

11 Scoring

Only one race will be held. Boats will be scored by class in the order of their finish.

12 Safety

A boat that retires shall notify the RC as soon as possible via VHF channel 73 or via email scc1944.rc@gmail.com A boat shall not exercise right of way, cross in proximity to, or interfere with reasonable transit of the race area by commercial traffic of any kind. Boats must take evasive action well in advance of a potentially dangerous situation. The US Coast Guard, ship captains, and bay pilots have been encouraged to report any incident they observe. A boat without way may use any means of propulsion to avoid underway commercial traffic, provided:

- (a) the boat does not gain an advantage
- (b) using the propulsion is the boat's only means of avoiding the commercial traffic
- (c) the boat submits a report (in writing or by email) to the RC by the protest filing deadline that describes the incident and the boat's actions

13 Awards

BEER! For all sailors of legal drinking age, to be collected after finishing from a separate RC boat approximately 50 yards NW of the finish line. Enjoy it responsibly as there will not be a formal post-race party. No further prizes will be awarded, but swag can be ordered from <https://www.ewespirit.org/ewe-stuff>

Contact

Drew Mutch (SCC RC Chair): 410-982-4877

Email: scc1944.rc@gmail.com



Thank you to our sponsors!



THE OFFICIAL TRANSPORTATION PROVIDER
FOR THE WASHINGTON NATIONALS



www.sandraklibby.com



INNOVATION ROOTED IN TRADITION

In Support of  Spirit Foundation

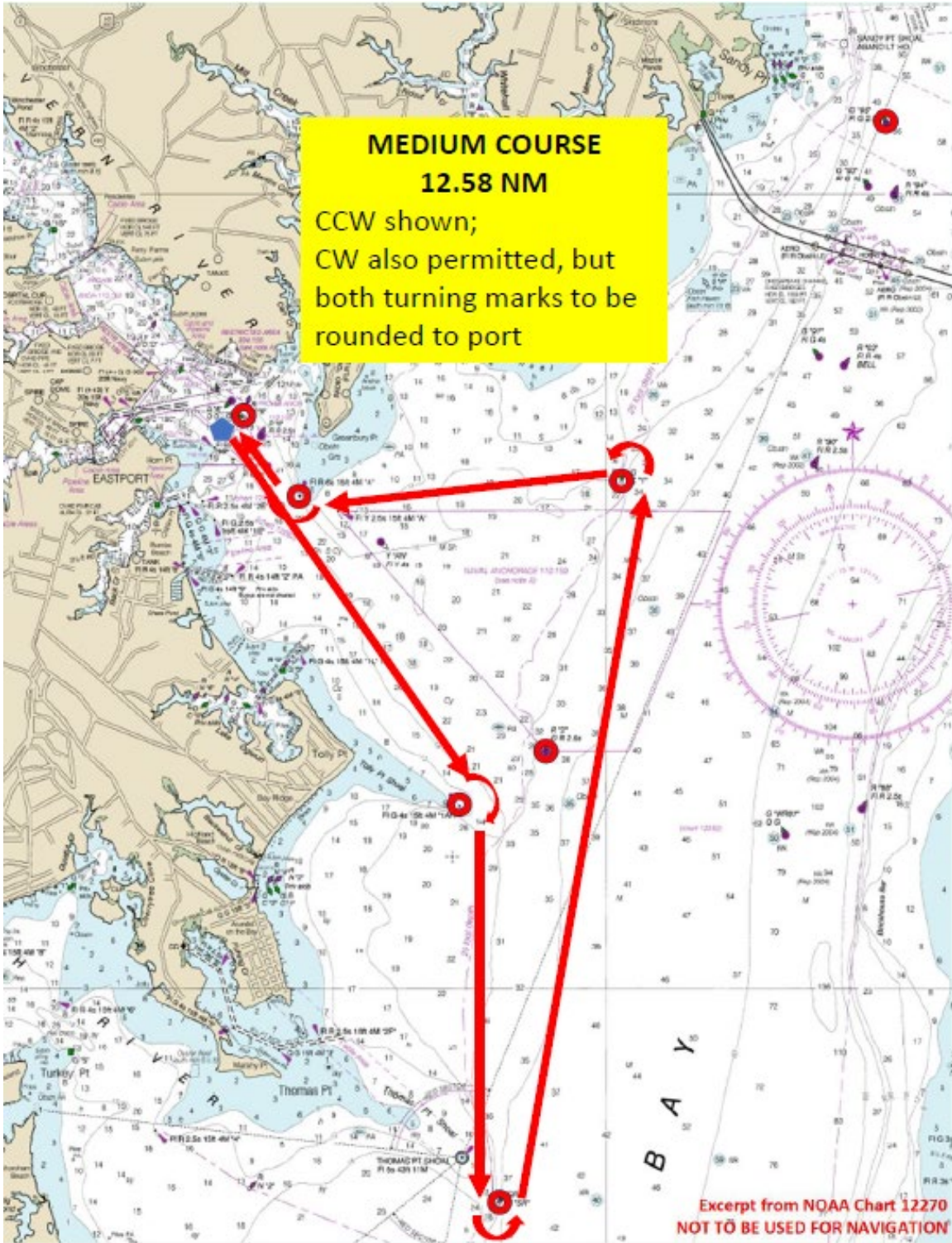


INNOVATION ROOTED IN TRADITION

www.sandraklibby.com

Thank you to our sponsors!

Appendix A – course diagram



INNOVATION ROOTED IN TRADITION

www.sandraklibby.com

Thank you to our sponsors!