

## DESCRIPTION of COURSE 2, 5, & 7

### COURSE #2

The starting line shall be as describe in these Event Sailing Instructions. Mark 1 of the course shall be an orange tetrahedron located 1.0 nautical miles from the start. It shall be left to port at the rounding. The finish shall be at the location of 'the start', resulting in a total course length of 2.0 nautical miles.

The magnetic bearing to Mark 1 will be posted on the Signal Boat.

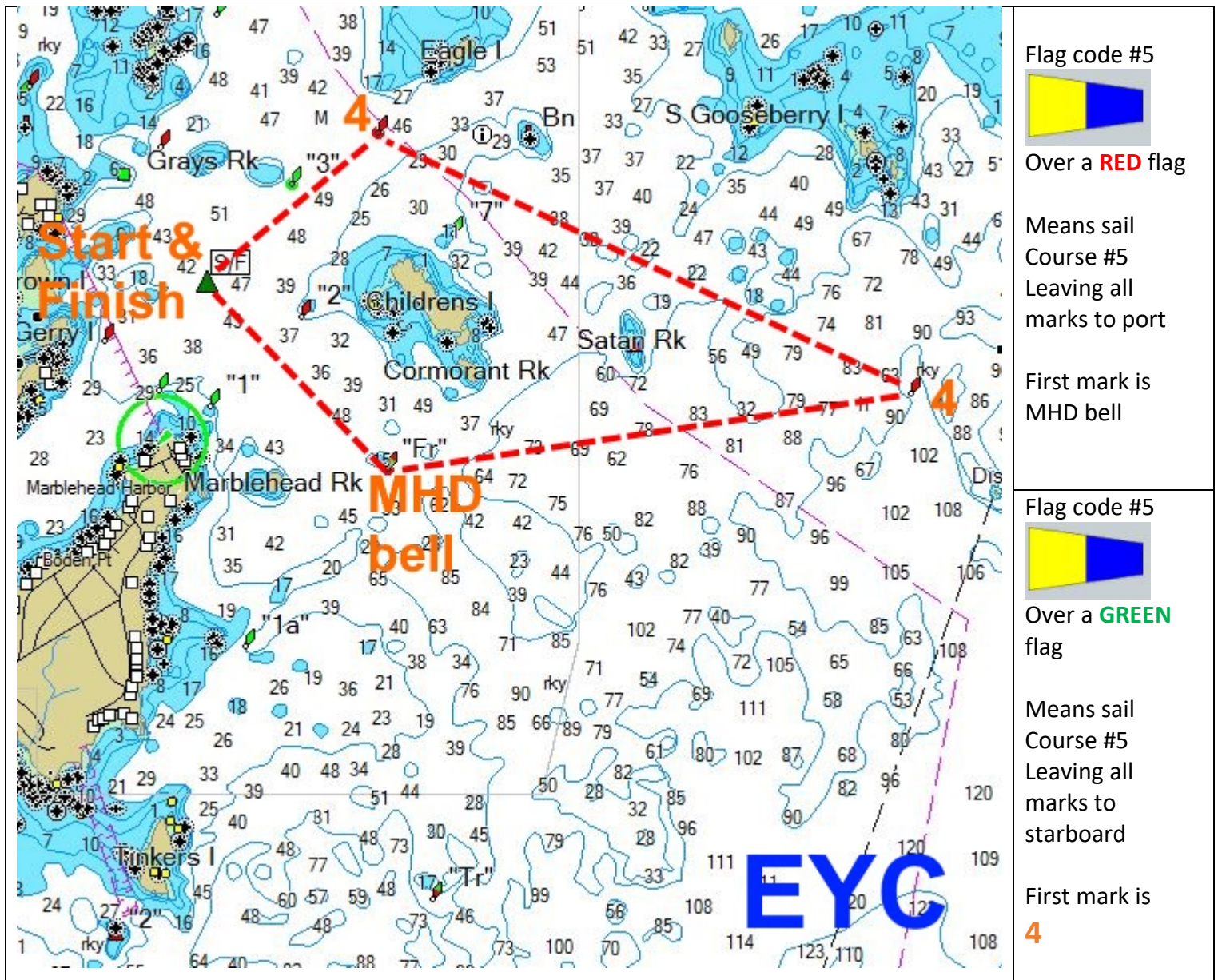


This course will be signaled by use of a numerical code #2 flag

### COURSE #5

Course #5 is approximately 5 nautical miles long and will be sailed leaving all marks to either port or starboard.

Flags will indicate which direction as shown below the course chart. Start & finish will be between the Signal boat's orange (start) or blue (finish) flag & a green tetrahedron.



## COURSE #7

Course #7 is approximately 7 nautical miles long and will be sailed leaving all marks to either port or starboard.

Flags will indicate which direction as shown below the course chart. Start & finish will be between the Signal boat's orange (start) or blue (finish) flag & a green tetrahedron.

