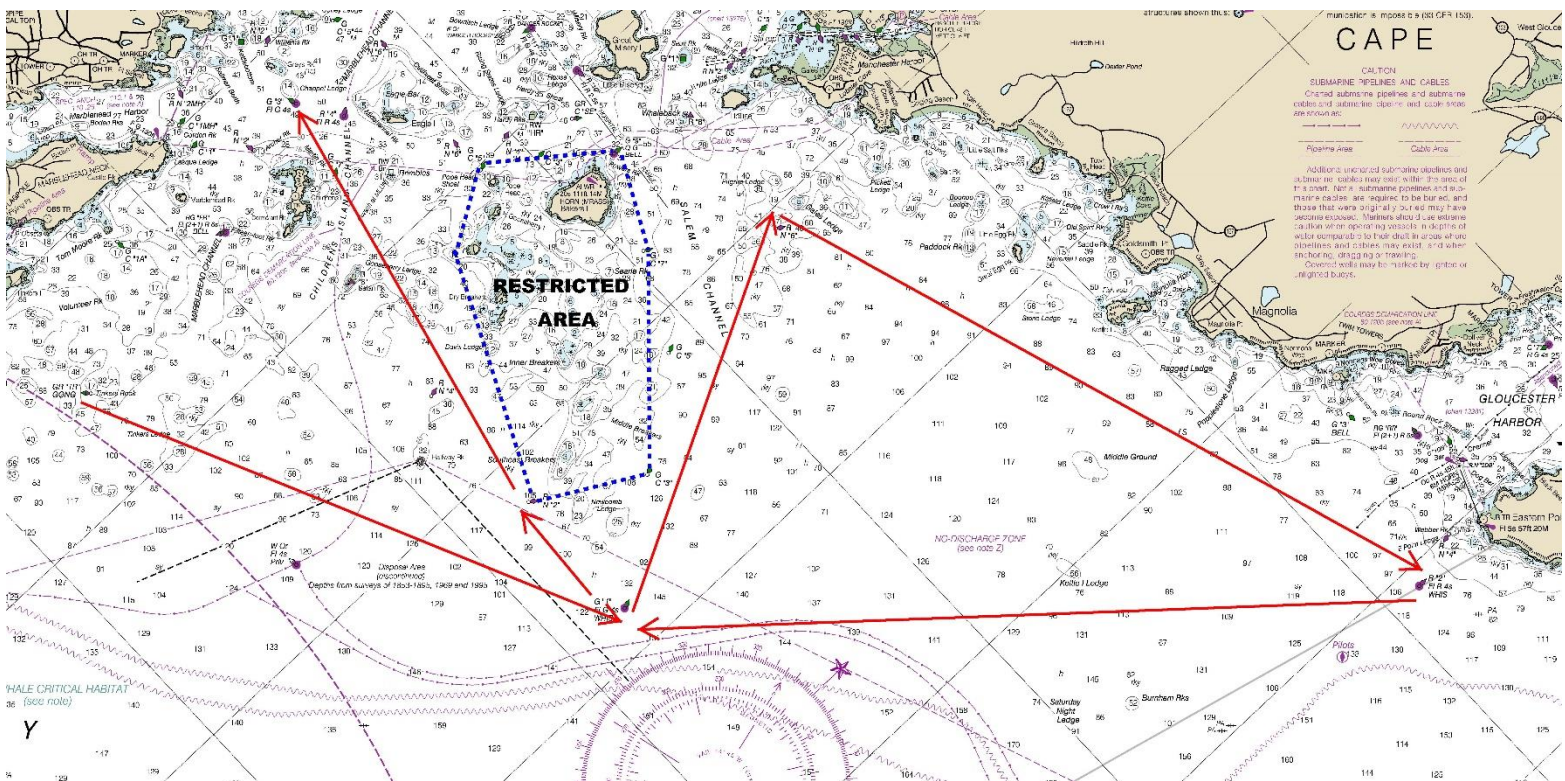


Mass Bay Shorthanded Regatta July 2, 2023

Course # 1

Distance: 19.8 nm

Mark	MBSA ID	Type	Description	Dist. To: nm	Leave Mark to
1	D	Start	TINKERS ROCK GONG GR "TR"	0.0	
2	B	Mark	NEWCOMB LEDGE WHISTLE G "1"	3.7	Port
3	8	Mark	SALEM CHANNEL NUN (GALES LG) RN "6"	2.6	Stbd.
4	A	Mark	EASTERN POINT WHISTLE R "2"	4.7	Stbd.
5	B	Mark	NEWCOMB LEDGE WHISTLE G "1"	5.0	Stbd.
6		Mark	R "2" Childrens Island Channel Buoy 2, Southwest of Newcomb Ledge must be left to Starboard		Stbd.
7	2	Finish	MARBLEHEAD CHANNEL (CHAPPEL LG) G "3"	3.8	Port.



*****The Course & Chart depictions, outlined above are for reference only and **SHALL NOT** be used for navigation*****