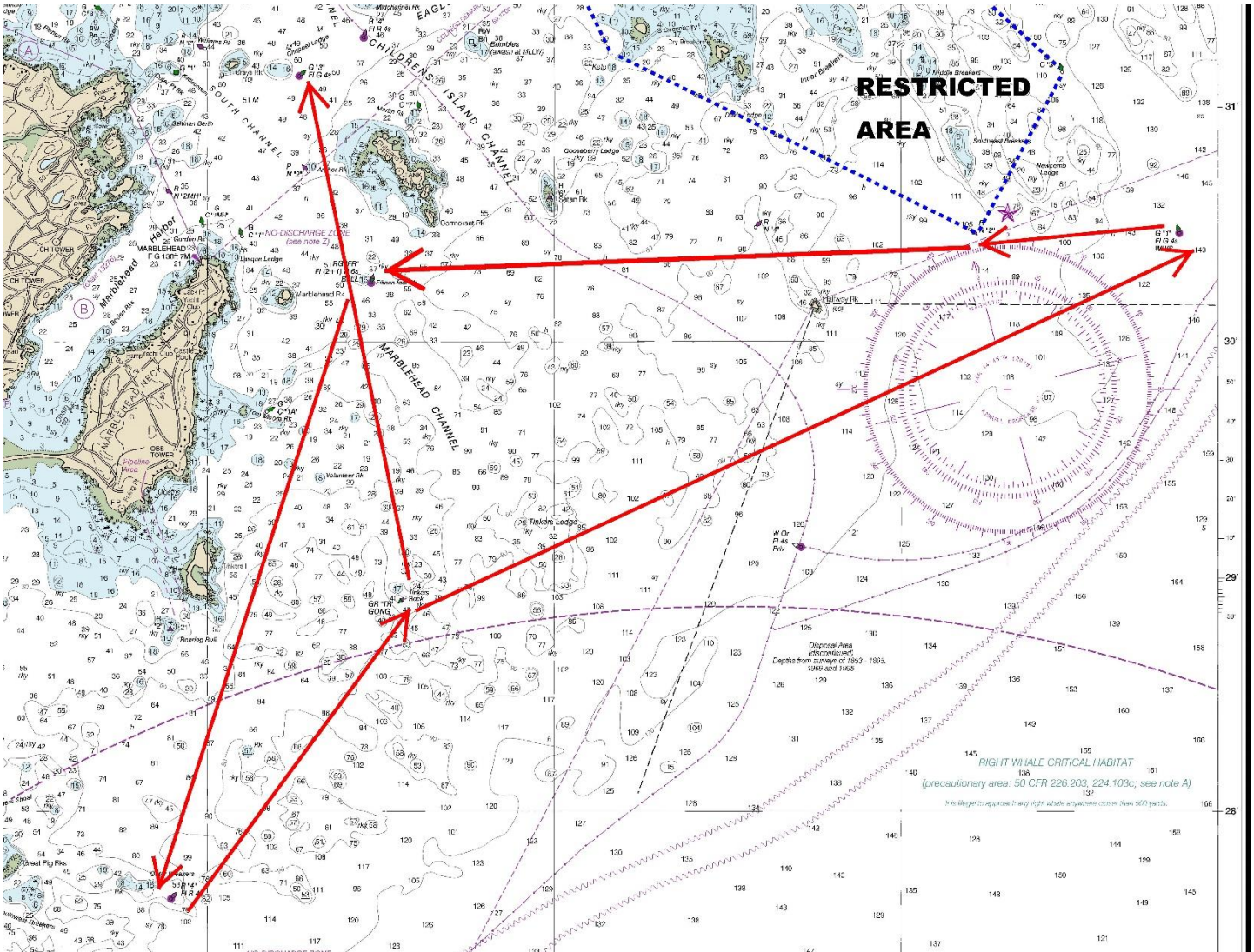


Mass Bay Shorthanded Regatta, July 2, 2023

Course # 4

Distance: 13.8 nm

Mark	MBSA ID	Type	Description	Dist. To: nm	Leave Mark to
1	D	Start	TINKERS ROCK GONG GR "TR"	0.00	
2	B	Mark	NEWCOMB LEDGE WHISTLE G "1"	3.7	Port
3		Mark	R "2" Childrens Island Channel Buoy 2, Southwest of Newcomb Ledge must be left to Starboard		Stbd.
4	3	Mark	MARBLEHEAD CHANNEL BELL 15-FT RK)	3.5	Port
5	G	Mark	GREAT PIG ROCKS BUOY R "4"	2.7	Port
6	D	Mark	TINKERS ROCK GONG GR "TR"	1.6	Port
7	2	Finish	MARBLEHEAD CHANNEL (CHAPPEL LG) G "3"	2.3	Port.



*****The Course & Chart depictions, outlined above are for reference only and **SHALL NOT** be used for navigation*****